

NORTH BENNET ST. SCHOOL

2013 ANNUAL REPORT



THE MISSION OF NORTH BENNET STREET SCHOOL IS TO TRAIN STUDENTS FOR CAREERS IN TRADITIONAL TRADES THAT USE HAND SKILLS, IN CONCERT WITH EVOLVING TECHNOLOGY, TO PRESERVE AND ADVANCE CRAFT TRADITIONS AND TO PROMOTE GREATER APPRECIATION OF CRAFTSMANSHIP.



Students working in the new program spaces at 150 North Street.



The Windgate Gallery provides space for the entire school to gather and serves as an exhibit and meeting space.



20

BOARD OF DIRECTORS

- | | |
|---|------------------------------|
| Charles L. Kline, CF '05, <i>Chair</i> | Devens H. Hamlen |
| Bruce Dayton, <i>Vice Chair</i> | William R. Hettinger, CF '07 |
| Peter H. Talbot, <i>Treasurer</i> | Nancy J. Hoffman |
| Brian C. Broderick, <i>Clerk</i> | Peder C. Johnson |
| Enid L. Beal | Joseph L. Kociubes |
| Henry P. Becton, Jr. | Stephen Lorch |
| H. Nichols B. Clark | Paul F. McDonough, Jr. |
| William G. Creelman | Caroline Mortimer |
| Elliot Bostwick Davis | Jonathan E. Pucker |
| Robert S. Devens | Adrienne N. Rabkin |
| Peter S. Feinmann, CA '83 | Lewis J. Surdam, PA '80 |
| Carl Ferenbach | Edmund C. Toomey |
| John F. Gifford, JM '97, CF '01 | Lisa von Clemm |
| Miguel Gómez-Ibáñez, CF '99, <i>President</i> | |

OVERSEERS

- | | |
|--------------------------------|------------------------------|
| Barbara Adams Hebard | Edward Howland |
| Natalie Q. Albers | Francis W. Hunnewell |
| McKey W. Berkman, BB '11 | Nicholas J. Iselin |
| Jacqueline D. Blombach, PC '02 | Isaiah A. Jackson |
| David L. Bloom | Theodore C. Landmark |
| Louise Burgin | Catherine C. Lastavica |
| Richard W. Cheek | Jonathan Levi |
| Daniel Cheever | Francis Jay Lynch, III |
| C. Forbes Dewey, Jr. | Nancy L. Maull |
| John M. Driggers, CF '97 | Walter H. McDonald |
| Elyse Etling | James McNeely |
| Charles Fayerweather | Peter N. Nessen |
| Denise Fenoglio, JM '06 | Lynn C. Osborn |
| Judy Ferenbach, BB '97 | Finley H. Perry, Jr. |
| David Firestone | Geraldine Kish Perry, JM '00 |
| Richard Fitzgerald | Laura Shucart |
| Stephen Friedlaender | Bill Shucart |
| J. Kimo Griggs | Dr. Katherine Sloan |
| Deborah J. Hall | J. Arthur Taylor, CF '00 |
| Burton M. Harris, CF '97 | Richard Tucker |
| Dr. Jonathan Bailey Holland | Colin Urbina, BB '11 |
| Brian D. Holt, CA '05 | Tim Williams |
| Amos B. Hostetter, Jr. | Jane Wilson |

WHAT A YEAR!

In August 2012, at the beginning of the fiscal year, we were deep in design development for a new facility, working closely with a stellar team of design and construction professionals, lawyers and finance professionals, but we had yet to raise a hammer or begin working at the site. Twelve months later, riggers were moving woodworking machines and other large equipment from the three NBSS campuses to the newly renovated spaces on North Street and we were a month away from occupying the building.

At the same time, enrollment was strong and the workforce development and diversity initiatives made strides. The school received national press coverage on the NBS Nightly News and scholarship aid increased by 25%. The capital campaign to fund the purchase and renovation exceeded all expectations and provided a welcome sense of confidence and stability during a period of upheaval and change.

The pace of the renovation, fundraising and move was remarkable by any standard, and the collaboration between the construction manager and dozens of sub contractors was a testament to their understanding of and affinity for the school's mission. The space itself is remarkable in its ability to easily accommodate the eight full-time programs, dedicated continuing-education space and a middle-school woodworking room.

Many long-time faculty and staff members, alumni, board members and donors were initially hesitant about the move, imagining that the culture of North Bennet

Street School would change and the school would lose its soul when it left its historic home. Even knowing it was an important and necessary move, many imagined they would miss the quirky old building. What is truly remarkable and significant is that the culture and quirkiness moved too. It started when the machines and benches—many more than 100 years old—were installed in the new facility. Within the first week of classes, with wood shavings on the floor and the sound of pianos being tuned, it was like we had always been here.

Recently, I did a final walk through of the empty North Bennet Street buildings and, while a shadow of our history will always be there, the real history as well as the future of the school is now located at 150 North Street. It is a reminder that the soul of the school is its community of students and all who support them.

The significant accomplishments of this year would not have been possible without the commitment of that community. I am fortunate to be surrounded by such a remarkable group of people.

Thank you.

MIGUEL GÓMEZ-IBÁÑEZ, CF '99
PRESIDENT

TRAINING TOMORROW'S WORKFORCE

New partnerships bring the next generation
of Boston's workforce to NBSS

During FY13, the NBSS workforce development initiative took a huge step forward when Lana Jackson joined the NBSS staff as the grant-funded Director of Diversity and Inclusion. Lana's experience working in Boston and her affinity for the programs at NBSS made it possible for the school's small admissions team to spend more time recruiting in city neighborhoods.

The NBSS workforce development initiative seeks to enroll more young Bostonians from underserved neighborhoods in the nine-month locksmithing and carpentry training programs and work with them as they embark on careers serving their communities. Lana began immediately making connections with community groups and Boston schools as part of this effort. Grants from local foundations provide administrative and scholarship support.

The school has begun cultivating relationships with counselors, headmasters, principals, teachers and parents of Boston Public School's Madison Park Technical Vocational High School, Boston Arts Academy and Boston English High School and has begun to create articulation agreements with these schools. The articulation agreements vary based on the school but may include making seats in the full-time programs available for qualified students if they meet application deadlines and providing NBSS scholarships for qualified students. Participating target schools may contribute funds to cover materials and tools for accepted students and students agree to stay engaged with NBSS when they graduate, helping to foster a cycle of community engagement with the school.

GRANT SUPPORT FOR CAREER TRAINING

The workforce development initiative benefits from a FY13 grant from the BNY Mellon Charitable Giving Program through the generosity of the Peter E. Strauss Trust. The grant supports scholarships for veterans and low-income students in the locksmithing and carpentry programs. Other funders of scholarship aid for diversity initiative students include the Boston Foundation and the Copeland Family Foundation.

THE PRESIDENT'S SCHOLARSHIP

In 2012, as part of the school's commitment to workforce development and training Boston residents, the President's Scholarship Award was initiated. The North Bennet Street School scholarship was established in partnership with the City of Boston to award one full-tuition scholarship to a Boston resident each year.

When Keimody Crockett, the 2013 recipient of the President's Scholarship received his acceptance letter and learned that he would benefit from a full-tuition scholarship, his mother called a "family meeting." She gathered his grandfather and godfather (who has a construction business) and Keimody to talk about how everyone would work together to help Keimody through the NBSS program.

Keimody was at the new building dedication event with Mayor Menino, who commended NBSS for its commitment to workforce development in Boston.



KEIMODY CROCKETT,
RECIPIENT OF THE FIRST
PRESIDENT'S SCHOLARSHIP,
IN CLASS WITH CARPENTRY
INSTRUCTOR BRIAN VOGT.

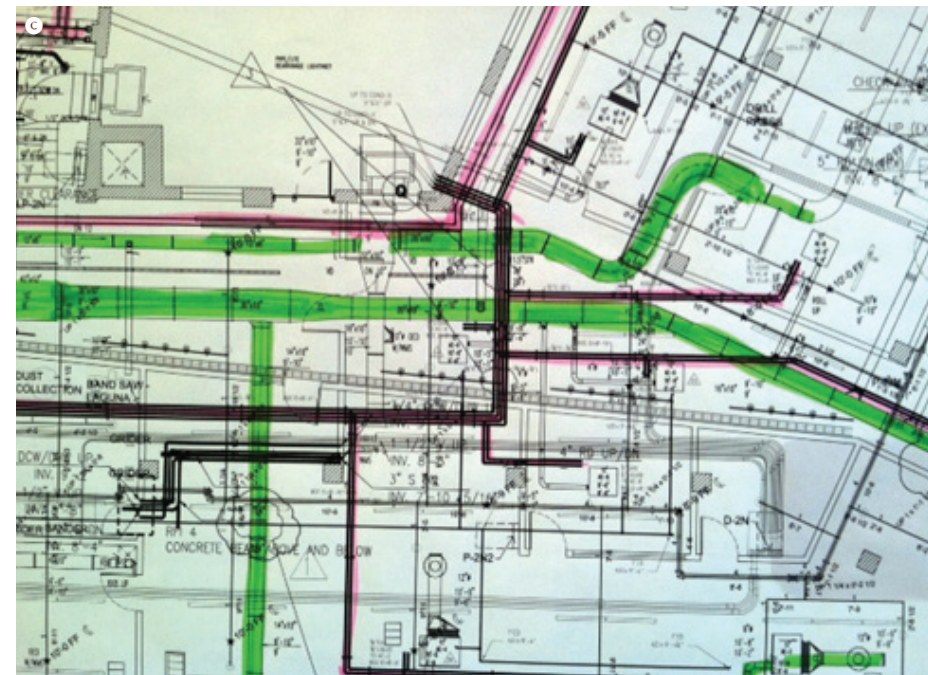
“As the person who greets students, faculty and the public, I see and hear the excitement about the new building every day. The entire school community is rejuvenated by the move and the opportunities the new building provides.”

LILLIAN DEGIORGIO, NBSS RECEPTION



11.4M

PURCHASE PRICE



- A The original walls were built with glazed brick. Walls were kept whenever possible but those that were demolished created lots of rubble.
- B The completed lobby includes a store and space to display work made by students and alumni.
- C Coordinating all new mechanical systems involved color-coded drawings and several teams of engineers and contractors.
- D A model of the project made by the design team from Kennedy Violich Architecture.
- E Project architect Buck Sleeper (foreground) was on site regularly to meet with contractors and engineers.

1/12

The City of Boston issues a Request for Proposal to develop two surplus, city-owned buildings on North Street.

2/12

NBSS submits a proposal with a bid of \$11,350,000.

5/12

On May 14, 2012, the NBSS bid for the buildings on North Street was accepted.

6/12

Weekly project team meetings begin.

7/12

NBSS receives \$250,000 from the Massachusetts Cultural Council Facilities Fund to support the purchase of the North Street buildings. Design development begins.

11/12

On November 1, 2012, NBSS closed on the purchase of the buildings at 150 North Street and the sale of the property at 39 North Bennet Street.

The *Under One Roof* capital campaign exceeds half-way mark.

FROM THERE TO HERE

A BUILDING PROJECT TIMELINE

At times it was like a movie on fast forward, the way the North Street building project went from a vision to reality in under two years. This brief timeline gives a sense of the intense activity and incredible collaboration and teamwork needed to accomplish the project. Everyone—donors, staff, faculty, students, trade professionals, vendors and construction workers—did what was needed to accommodate others, complete their job and ensure that school opened on September 9, 2013.





- ❶ The link structure showing the third floor balcony. The exterior windows from the original buildings become interior windows overlooking the Windgate Gallery.
- ❷ The north wing floors are higher than the south wing. The main staircase has landings at each level.
- ❸ A limited budget resulted in the mechanical systems remaining exposed, showcasing the builders' work.
- ❹ Large window openings, a source of great daylight, being prepared for new windows.
- ❺ Walls going up in the third floor of the north wing.
- ❻ Cranes were on site regularly, lifting the steel for the link structure and mechanical equipment to the roof.



6.7M

VALUE OF NBSS
PROPERTY IN TRADE



12/12

Demolition begins. Pre-construction planning and design development continues.

1/13

Subcontractors begin bidding on construction work. Demolition continues.

2/13

Painting the ceilings and cleaning the glazed tile walls of the north wing begin.

3/13

The pace of activity increases, openings between the buildings and the garage are made as demolition continues.

More subcontractors arrive and walls start to go up. The staircase in the north wing is removed to make way for the new elevator.

To prepare for the link structure, openings in the walls and new structural elements are added. Demolition continues in the basement as the old boiler and other equip-

ment are removed and the space made ready for new equipment. At the end of the month, door frames arrive and are lifted into place.

4/13

Drywall arrives for new walls. Heavy equipment arrives to pour concrete and lift steel for the link structure.

Ducts for the heating system arrive, more walls erected, more cables installed, and 125 workers are on site daily.

5/13

The program spaces on the second and third floors of the north wing are ready for paint. Violin Making and Repair and Bookbinding move from temporary space in the south wing.



“At KVA, we believe that the best architecture comes from experience working with materials; you need to know how to make things. At a time when national production is being outsourced, the new (NBSS) building creates the infrastructure and community space that enables education, craft and fabrication to thrive in the heart of Boston.”

FRANO VIOLICH, PRINCIPAL
KENNEDY VIOLICH ARCHITECTURE



14.8M
CONSTRUCTION COST



- L** The city reflected in the Windgate Gallery curtain wall.
- M** Installation of the glass curtain wall.
- N** Governor Deval Patrick visits the construction site.
- O** The finished violin making and repair bench room.
- P** Students working in the new bookbinding bindery.
- Q** Orientation on September 9.

6/13

Demolition in the 2nd and 3rd floors of the south wing begins and includes removing interior masonry walls, creating lots of rubble and dust.

Asbestos containing flooring is discovered on the 3rd floor delaying construction. Utility work in the street begins and the link structure continues to take shape.

7/13

More than 250 new windows arrive and are installed daily, the supports for the main staircase are installed and it becomes possible to walk from the south wing

into the link structure. In mid-July, during a heat wave with temperatures in the 90s, the first of the woodworking machines are moved to North Street.

At the end of the month, the glass curtain wall is installed and Governor Deval Patrick visits the work site.

8/13

Finish work begins. Doors are installed, the ceiling in the link space is installed, bright red door signs appear, the last of the windows are installed, the custom cabinets in

the lobby arrive and the move begins. By the end of the month, instructors are unpacking boxes and setting up the department spaces.

9/13

The administrative offices are moved and school opens in the new building on September 9. A punch list is created and final paint and finish work continues.



PROJECT TEAM

PROJECT MANAGER
Colliers International

ARCHITECT
Kennedy & Violich Architecture

CONSTRUCTION MANAGER
BOND

STRUCTURAL ENGINEER
Buro Happold

MEP/FP ENGINEER
Buro Happold



32.2M
TOTAL PROJECT COST

A SUCCESSFUL CAMPAIGN

Support for the Capital Campaign and
Annual Fund exceeds all goals

The majority of the \$17 million raised in the *Under One Roof* Capital Campaign was raised in FY13. The public phase of the campaign was launched quickly in May 2012 when the school learned that its bid for the buildings on North Street was accepted.

The \$15 million goal originally seemed like a stretch, but the Board of Directors and staff soon learned that the vision to reunite the school under one roof was a powerful motivator and both long-time supporters and new donors were quick to make pledges.

THE CAPITAL CAMPAIGN COMMITTEE

Raising \$17 million takes extraordinary vision and leadership. Fundraising is a team sport and the NBSS Capital Campaign Committee was a stellar team.

Henry Becton
McKey Berkman
Bruce Dayton
Carl Ferenbach
Jock Gifford
Devens Hamlen
Bill Hettinger
Amos Hostetter
Charlie Kline
Caroline Mortimer
Kevin Phelan
Ed Toomey

By the close of the campaign in October 2013, \$17.05 million was raised to support the purchase and renovation of the new facility on North Street. More than 200 gifts were received, with the greatest number of gifts made during FY13 when close to \$13 million was raised.

Opening the new facility nine months after construction started, with fundraising goals not only met but exceeded, is a tremendous accomplishment that would not have been possible without the dedicated and forward thinking campaign committee members, Board members and donors who shared the vision of a reunited school and contributed generously to make it happen. One third of donations to the campaign came from graduates of the school and a noteworthy number of faculty and staff. The campaign also introduced new supporters to the school and many donors gave second and even third gifts to support the new building.

ANNUAL FUND DONORS GO ABOVE AND BEYOND

Through the generosity of a wide range of donors, including both longtime supporters and new friends who became engaged through the capital campaign, the 2012–2013 Annual Fund exceeded its goal by \$46,000 for a total of just over \$416,000. This record-breaking total helps ensure the success of the school's transition to the North Street building. Year to year, programs are taught, students learn and NBSS thrives—with the support of the Annual Fund.



IN EARLY NOVEMBER, SUPPORTERS OF THE CAPITAL CAMPAIGN ENJOYED A PREVIEW PARTY AND TOURS OF THE NEW BUILDING. NBSS PRESIDENT, MIGUEL GÓMEZ-IBÁÑEZ, IS SHOWN HERE WITH LISA VON CLEMM (LEFT) AND HER DAUGHTER STEFANIE VON CLEMM.

“When the school moved, we left the constraints of the old building while bringing the history of the school with us. What’s really exciting is that now we are in a position to evolve into a school for the future.”

DEBBIE CYR, PIANO TECHNOLOGY INSTRUCTOR



A view of the new store and gallery space in the lobby.

STATEMENT OF ACTIVITIES

For the year ending July 31, 2013

On behalf of the Finance Committee of the Board of Directors, I am pleased to present the Treasurer's Report for fiscal year 2013.

The school had a solid year with revenues of \$15,316,356 and expenses of \$4,941,204. In comparison to fiscal year 2012, revenues increased by 57.2% while expenses rose by 14.4%.

As a result of strong revenue and careful control of expenses, the school added \$15,386,357 to its net assets, bringing the total to \$27,106,656.

The budget for school-funded financial assistance grew by 33.33%, which made it possible for students to benefit from an increase in the number and size of scholarships offered by the school.

Contributions, both restricted and unrestricted, exceeded \$11,300,000. The higher than typical amount reflects the school's ability to successfully fundraise for the Annual Fund and the *Under One Roof* capital campaign.

The Board expresses its admiration for the school's administration and faculty in helping to maintain the school's financial stability while undergoing a capital campaign and moving to North Street.

Peter H. Talbot

PETER H. TALBOT
TREASURER

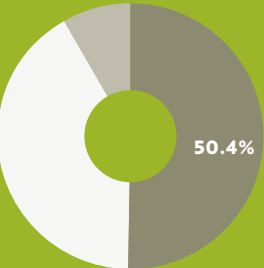
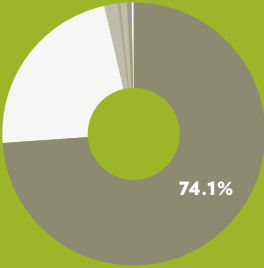
REVENUES	JULY 31, 2013	JULY 31, 2012	%CHANGE
Tuition and fees	\$3,459,659	\$3,280,025	5.48%
Contributions, gifts and grants	11,363,002	5,917,252	92.03
Project and instrument revenue	252,439	210,206	20.09
Special events revenue, net of expenses	(7,309)	5,015	-245.74
Investment income	42,722	69,831	-38.82
Gain (loss) on investments	120,335	184,439	-34.76
Miscellaneous	47,725	12,740	274.61
Store sales, net of cost of sales	37,783	61,516	-38.58
Total Revenues	\$15,316,356	\$9,741,024	57.24%

EXPENSES	JULY 31, 2013	JULY 31, 2012	%CHANGE
Program expenses	\$2,489,324	\$3,061,160	-18.68%
General and administrative	2,049,544	784,111	161.38%
Fundraising and development	402,336	472,047	-14.77%
Total Expenses	\$4,941,204	\$4,317,318	14.45%

NON-OPERATING ACTIVITY	JULY 31, 2013	JULY 31, 2012	%CHANGE
Gain (loss) on sale of property and equipment	\$5,011,205	(1,428)	—

NET ASSETS	JULY 31, 2013	JULY 31, 2012	%CHANGE
Change in net assets	\$15,386,357	\$5,422,278	183.76%
Net assets at beginning of year	11,720,299	6,298,021	86.09%
Net assets at end of year	\$27,106,656	\$11,720,299	131.28%

This statement is an excerpt from audited financial statements (draft) of North Bennet Street School.



THANK YOU FOR YOUR SUPPORT

The generosity of donors helps ensure North Bennet Street continues to thrive. Contributions provide scholarship support, enhance programs and support capital projects.

Gifts of Support

LEGACY PATRON (\$10,000+)

Allen H. & Selma W. Berkman
Charitable Trust
McKey, BB '11 & James Berkman
Bruce & Lynn Dayton
Kirk S. Hachigian
William, CF '07 &
Corinna Hettinger
High Meadows Foundation
Barbara & Amos Hostetter
Charles, CF '05 & Charlotte Kline
Morgan Palmer
Lisa von Clemm

PAULINE AGASSIZ SHAW SOCIETY (\$1,000-\$9,999)

Diane Benison
Andrew Birsh
Phyllis & David Bloom
William T. & Louise Burgin
J. Otis Carroll, Jr., PC '97
Ruth O. Carroll
Richard & Betsy Cheek
Brian & Karen Conway
Timothy J. Csanadi
Nicholas & Elizabeth Deane
Bob & Bobo Devens
Charles & Lisa Farber
David & Karen Firestone
Stephen Friedlaender
John F. Gifford, JM '97 CF '01
& Brigid Sullivan
Deborah & Arthur Hall
Burton, CF '97 & Shirley Harris
Julie E. & Bayard Henry
Ms. Jutta B. Hicks
Elizabeth L. Johnson
Peder C. & Ali Johnson
Barbara & Wallace Kemp
Joseph L. & Peggy R. Kociubes
Carolyn E. Kunin
Timothy & Susan Larkin
Catherine C. Lastavica
George & Emmy Lewis
Lindsay Foundation
Marvin Lummis, PC '00

Nancy A. Maloney, CF '10
Nancy L. Maull
Walter H. McDonald
Stephen E. & Carol A. Memishian
Caroline Mortimer
& Richard Grubman
Herbert & Virginia Oedel
Robert & Elizabeth Owens
Pasek Corporation
Finley H. Perry, Jr.
Adrienne & Mitchell Rabkin
Neil & Anna Rasmussen
Thomas Stoker
Peter H. Talbot
Elizabeth Thomson
Gaye Hill & Jeffrey Urbina
Robert C. Weir
Anonymous (3)

MASTER CRAFTSPERSON (\$500-\$999)

David, CF '11 & Holly Ambler
Francis & Carla Baird
David C. Betts, PA '72
Brian C. Broderick
H. Nichols B. Clark
Kevin & Carol Cleveland
Clemency Coggins
Barbara O. David
Thomas Divilio
Denise M. Fenoglio, JM '06
Rebekah Lord Gardiner, BB '93
& Matthew Gardiner
Daniel A. Gómez-Ibáñez
& Ginny Swisher
José & Nannette Wilson
Gómez-Ibáñez
Miguel Gómez-Ibáñez, CF '99
& Fay Larkin
Deborah M. Hauser
Amalie Kass
Andrew Ladygo
Daniel Levitan, PT '75
Timothy & Julia Marsters
Peter McGhee, CF '04
Robert & Susan Montgomery
William A. & Elizabeth
Macy Oates, Jr.

The Pennyghael Foundation
Sheila D. Perry
Sally Phillips, PT '76
Lia G. & William J. Poorvu
Charles Sawyer
Marie Louise Scudder
Ann B. & Robert L. Simonds in
memory of Robert P. Bainbridge
Steven B. Soppe
Susan & William Staley
Jane & James Wilson
Anonymous

ARTISAN (\$250-\$499)

Jacob D. Albert
Richard Beaty
Benjamin Construction, Inc.
Paul A. Bittenwieser
Judith Brown Caro
John & Betsy Craggs
Debra Cyr, PA '93
J. T. Delaney Construction LLC
Tia Dennis, CF '03 &
Charles Morris
Eastern Mass Guild
of Woodworkers
Doris C. Freitag
Paula J. Garbarino, CA '80, CF '88
Gilman, Guidelli & Bellow Co.
Gary W. Green, CF '97
Luisa Hunnewell & Larry Newman
Willard & Dee Hunnewell
Easy Wood Tools
David M. Kaplan
Dave B. Manley
Loy Martin
Peter & Barbara Miller
Jane Callahan Moore, CA '88
& Fay Larkin
Lauren Omartian in memory
of Sarkis Azarigian
Fred & Christine Parson
David Polstein, VM '89
& Emily Stavits
Ken & Leslie Pucker
Ken & Susan Reed
Dave Troiano
Joseph, CF '79 & Annie Twichell
Michael Ward & Elizabeth Webber
Charles Weed & Louise
Eastman Weed

David H. Wellington, CF '98
Deborah Wender
Jonathan & Sydney Winthrop
Frank S. Wright, CF '00

JOURNEYMAN (\$100-\$249)
Charles C. Ames &
Kathleen L. Ames
Elizabeth P. Barringer
Lisa Bielefeld
Judith M. Bixler-Collier
Michael R. Blackwell, PT '79
Philip C. Bowman
Richard J. Hermon-Taylor
& Harriet S. Bundy
Robert P. Burchard in honor
of Carol Burchard O'Hare
Ira Carp
Beth Carroll-Horrocks
Sara B. Chase
Commonwealth Lock Co.
Bill Contente, PT '80
Linzee & Beth Coolidge
John & Joan Cronin
Juliet R. Davenport, PT '94
Jeremiah, CF '84 & Amy de Rham
John J. Donahue, Jr.
Daniel Dover, PA '90
Mark Elenko
Laurel Farnsworth
Crystal Fielding, PA '07
Cynthia H. Fields-Belanger, BB '97
& Victor Belanger
Richard Fitzgerald
Irving, CF '86 & Shirley Gerber
Ken Gilbert, BB '10
Timothy & Jane Gillette
Bruce Goodwin
Nathanael B. Greene, Jr.
Stuart Grigg
Henry H. Hammond
Edward S. Hand
Judith P. Hanson, CF '95
Donald & Ann Hare
Yumiko Harris, BB '08
Leslie Hartwell, JM '06
& David Jameson
Lyle Hiorns, PA '01
Arthur C. & Eloise W. Hodges
Margaret K. Ikeda, PA '80

David H. Wellington, CF '98
Deborah Wender
Jonathan & Sydney Winthrop
Frank S. Wright, CF '00

JOURNEYMAN (\$100-\$249)
Charles C. Ames &
Kathleen L. Ames
Elizabeth P. Barringer
Lisa Bielefeld
Judith M. Bixler-Collier
Michael R. Blackwell, PT '79
Philip C. Bowman
Richard J. Hermon-Taylor
& Harriet S. Bundy
Robert P. Burchard in honor
of Carol Burchard O'Hare
Ira Carp
Beth Carroll-Horrocks
Sara B. Chase
Commonwealth Lock Co.
Bill Contente, PT '80
Linzee & Beth Coolidge
John & Joan Cronin
Juliet R. Davenport, PT '94
Jeremiah, CF '84 & Amy de Rham
John J. Donahue, Jr.
Daniel Dover, PA '90
Mark Elenko
Laurel Farnsworth
Crystal Fielding, PA '07
Cynthia H. Fields-Belanger, BB '97
& Victor Belanger
Richard Fitzgerald
Irving, CF '86 & Shirley Gerber
Ken Gilbert, BB '10
Timothy & Jane Gillette
Bruce Goodwin
Nathanael B. Greene, Jr.
Stuart Grigg
Henry H. Hammond
Edward S. Hand
Judith P. Hanson, CF '95
Donald & Ann Hare
Yumiko Harris, BB '08
Leslie Hartwell, JM '06
& David Jameson
Lyle Hiorns, PA '01
Arthur C. & Eloise W. Hodges
Margaret K. Ikeda, PA '80

David & Ann Ingram
Kenneth & Robin Isaacs
Jack Jacobs
Christine Jankowski
Jeffrey A. Kaiden
Gretchen G. Keyworth
Kevin F. Kirane
Barbara Krakow
Alexander Krutsky, CF '81
& Maggie McNally
Gregg & Ann Kulichik
Thomas Lee, CF '88
Brooks M. Lobkowicz
Jeffrey Long, CF '97
Mary Jane Long
Philip G. Maddock
Andrew McInnes, CF '95
William J. McMullin, CF '97
James McNeely Architects
Jonathan & Jane Metcalf
Consuela G. Metzger, BB '93
Ned Miller, PC '98
John J. Mohr
Brittany Molloy-Kenney
Thomas Edmund Mulligan, CF '01
Scott Ness, PA '12
John Nove, BB '07
Selma Ordewer
Samuel D. Perry
Tatiana Wilcke, CF '89
& Gregory Porfido, CF '89
Bill Rainford, PC '11
Mary & John Richards
Chris Rifkin
James & Sandy Righter
David Riordan
John & June Robinson
Valerie A. Rogers, CF '97
Michael & Karen Rotenberg
Ilya Rutman, VM '92
Catherine & Phil Saines
Nancy & Richard Schrock
Christopher Skocay, CA '00
Michael T. Sloan, PA '81
Rebecca Smyrl, BB '05
Karen Solomon
Toni Strassler
Molly Sturges, PA '00
Joseph S. Tanen, VM '87
J. Arthur, CF '00 & Jeannette Taylor
Rosemary Trainor, JM '91
Kenneth P. Tucker, PA '82
Lawrence M. Tuttle, CF '81
& Patricia Martin
Philip Wales, PC '93
Victoria Waller in memory
of Douglas Dayton
Thomas & Alice Walsh
Ray K. Warburton
Michele M. Waters, BB '93
Paula & Harry A. Wheeler, III
Stephanie E. Wolff
Valerie A. Wyckoff, BB '89
Rodney Yeh, PA '10
Anonymous (2)

APPRENTICE (\$1-\$99)
Joseph Abate
Judith G. Allan in memory of
Leslie A. & Harold E. Greene
William & Nancy Ames
Dorrie Bell, PT '99
Mike Bingham, PT '92
Anthony Bravo
Robert & Juliana Brazile
Susan Farber Bretz, PT '74
Jim Briggs
Melanie Brooks
Cate Carulli, PT '87
Richard Caruso & Joyce Tavon
James Ciampa
Tobey & Laurel Clark
Joanne L. Corrieri-Upham
in memory of Edward Faria
Sarah M. Corvene, PC '99
Rosanna Coyne
Christopher & Sandra Van Curan
Tony Davies
Ray Davies, PT '86
Thomas, PC '88 & Rhoda Decatur
Mark DeGrandpre, JM '95
Lillian DiGiorgio
Ainsley Donaldson, CF '73
Lynn Faught
John Favaloro
Lori Foley, BB '95
Adel & Bonnie Foz
John K. & Kathleen George, Jr.
Phyllis Glazerman, PA '92
Andrew, CF '08 & Sarah Glenn
Christopher Grant
Russell T. Greve
Marsha S. Hassett, VM '98
H. Hollis & Edith Hunnewell
Roman Jackiw
Elizabeth Johannsen, JM '10
Catherine L. Johnson, CFM '85
Kristen N. Johnson
William & Mary Kafes
Dudley H. Ladd
Ben Leclerc
Dr. & Mrs. Michael Lyon
Kathleen A. Markees, BB '92
James & Jessica McDonald
Judith B. McDonough
William & Judith McMillen
Jon Molesworth, CF '99
Abigail Morrison, CF '78
Robert V. Mullen
John F. O'Regan, BB '97
William & Nancy Osgood
Peter & Patricia Parks in honor
of Mr. & Mrs. David Parks
Charles, CF '06 & Regina Pineo
Paul Piszczek, PT '09
Peter, PA '92 & Cathryn Place
James & Dorothy Rogers
David Rosen
Deborah L. Rossi, BB '02
William J. Salisbury
Nanette Liberty Savini, PC '97
Thomas C. Schwartzburg

John W. Sears
Stephen Snyder, PT '77
John E. Stebbins
Israel Stein, PT '87
Diane & Bradford Straus
Jane A. Swanson
William D. Webster
Anonymous

Departmental Contributions

Bookbinding
Elizabeth Thomson
Lisa von Clemm

Cabinet and Furniture Making
Vin, CF '13 & Becky Kennedy

Jewelry Making and Repair
James L. Therrien, JM '98

Locksmithing
Robert A. Labbe, CEO Lab Security

Piano Technology
Melanie Brooks
William McGuffin, PT '79
Bruce Dillon, PT '76
Piano Technicians Guild

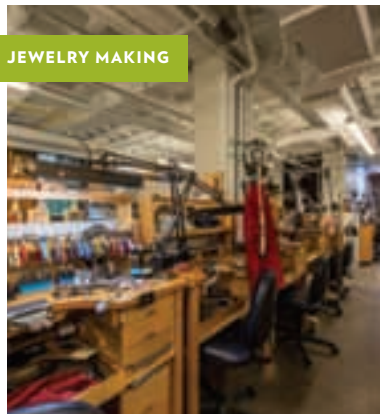
Preservation Carpentry
Johnathan Ericson, PC '11
McGinley Kalsow & Associates

Workshops
Vin, CF '13 & Becky Kennedy

Grants

George I. Alden Trust
Frank M. Barnard
Foundation, Inc.
Barr Foundation
Associates of the Boston
Public Library
BNY Mellon Charitable Giving
Program/Peter E. Strauss Trust
Cabot Family Charitable Trust
Copeland Family Foundation, Inc.
Frances R. Dewing Foundation
Alice Willard Dorr Foundation
Eastman Charitable Foundation
EdVestors, Inc.
Elisha-Bolton Foundation
The Felicia Fund, Inc.
Elizabeth Taylor Fessenden
Foundation
David Greenewalt Charitable Trust
Thomas W. Haas Foundation
Roy A. Hunt Foundation
Esther B. Kahn Charitable
Foundation
Ruby W. & Lavon P. Linn
Foundation
Lovett-Woodsum Foundation
The Lynch Foundation
The Manton Foundation
Brian R. Marlowe Foundation

Massachusetts Charitable
Mechanic Association
Massachusetts Cultural Council
Massachusetts Cultural
Facilities Fund
James C. Melvin Trust
Amelia Peabody Charitable Fund
Harold Whitworth Pierce
Charitable Trust
Puffin Foundation
Mabel Louise Riley Foundation
Clinton H. & Wilma T. Shattuck
Charitable Trust
Sholley Foundation, Inc.
Seth Sprague Educational
& Charitable Foundation
The Boston Foundation
John H. & H. Naomi
Tomfohrde Foundation
Schrafft Charitable Trust
F. Roscoe & Vila B. Webber
1974 Charitable Trust
Windgate Charitable Foundation
Yankee Scholarship Foundation
Yankee Security Convention



Scholarships

Greg Comby Scholarship Fund
W. Michael & Leslie Comby

Joseph Newman Scholarship Fund
Mary Patrick Bogan
Emily Claire Grund, BB '05
Walter Newman &
Marlene Nienhuis
Sharon & Todd Pattison

Piano Scholarship Fund
Matthew Onigman

Walter McDonald Scholarship Fund
Caroline Mortimer &
Richard Grubman
Robert Ecke
Carol Burchard O'Hare
Barbara Halporn, BB '06
Mr. & Mrs. P. Beildeck

President's Scholarship Fund
McKey, BB '11 & James Berkman

Mike Bingham, PT '92
The William R. Fenoglio
Foundation
Crystal Fielding, PA '07
Brian Hall Guck
John & Lisa Knopf
Michele L'Heureux, CA '03
San Francisco Piano Shop
William McCoy & Susan Brown
Charles E. Steinman
Visnick Family

Under One Roof
Capital Campaign

\$1,000,000+
The Barr Foundation
Bruce & Lynn Dayton
Hettinger Foundation
High Meadows Foundation
The Manton Foundation
Windgate Charitable Foundation

\$500,000 - \$999,999
Massachusetts Cultural
Facilities Fund
The Lynch Foundation
Amelia Peabody Charitable Fund
Lewis, PA '80 & Toni Surdam

\$100,000 - \$499,999
George I. Alden Trust
Mc Key, BB '11 & James Berkman
Gladys Brooks Foundation
William T. & Louise Burgin
Cabot Family Charitable Trust
Bruns & Penny Grayson



Thomas W. Haas Foundation
Marilyn, BB '88 & James Heskett
Charles, CF '05 & Charlotte Kline
Kline Family Foundation, Inc.
Ruby W. and Lavin P. Linn
Foundation
Lovett-Woodsum Foundation
Caroline Mortimer &
Richard Grubman
Mabel Louise Riley Foundation
Michael Ruane
Vincent J. Ryan & Carla E. Meyer
Gaye Hill & Jeffrey Urbina

\$50,000 - \$99,999
The 1772 Foundation
Enid L. Beal
Timothy J. Csanadi
Bob & Bobo Devens
David & Karen Firestone
John F. Gifford, JM '97 CF '01
& Brigid Sullivan
Starr Moore
The Harold Whitworth Pierce
Charitable Trust
Puffin Foundation

\$10,000 - \$49,999
A Friend of NBSS
James & Hanna Bartlett
Jeannie & Henry Becton, Jr.
Brian C. Broderick
William G. Creelman
John M. Driggers, CF '87
Peter S. Feinmann, CA '83
The Felicia Fund, Inc.
Stephen Friedlaender
Barbara Halporn, BB '06
Devens H. & Sandy Hamlen
Burton M., CF '97 & Shirley Harris
Julie E. & Bayard Henry
Charles J. Hess
Francis W. Hunnewell
Barbara R. Kapp
Barbara & Wallace Kemp
Joseph L. & Peggy R. Kociubes
Joyce Lyons

Walter H. McDonald
& Carol O'Hare
Peter McGhee, CF '04
Richard, CF '05 &
Marie, BB '02 Oedel
Lynn C. Osborn
Robert & Elizabeth Owens
Finley H. Perry, Jr.
Adrienne & Mitchell Rabkin
Seth Sprague Educational
and Charitable Foundation
Peter H. Talbot
Mary & Tim Williams
Jane & James Wilson

\$1,000 - \$9,999
Albert G. Bangert, CF '03
Jackie Blombach, PC '02
& Michael Duca
Phyllis & David Bloom
Nancy Caruso
Linda Caterino
Richard & Betsy Cheek
Daniel Cheever, Jr. & Sue Stasiowski
H. Nichols B. Clark
Davlin Philanthropic Fund
C. Forbes & Carolyn Dewey
Charles & Carol Fayerweather
Denise M. Fenoglio, JM '06
Claire Fruitman, CF '96 & Brian
& Griffin Bram
Rebekah Lord Gardiner, BB '93
& J. Matthew Gardiner
Michael & Susan Goldman
Miguel Gómez-Ibáñez, CF '99
& Fay Larkin
Deborah & Arthur Hall
Bryan T. Hartzler, PT '00
& Marlene Metz
Nancy J. Hoffman
Brian, CA '05 & Melinda Holt
Walter & Lila Hunnewell
Charles & Berit Hunter
Peder C. & Ali Johnson
Catherine C. Lastavica
Stephen & Jane Lorch
Michael, CF '05 & Lauren Lyons
Marc Margulies
Brian R. Marlowe Foundation
Paul & Carla McDonough
James McNeely
Anthony Pangaro
Lance Patterson, CF '79
Sheila D. Perry
David Polstein, VM '89
& Emily Stavis
Carol C. Rader
Laura & William Shucart
J. Arthur, CF '00 & Jeannette Taylor
Lisa von Clemm
Anonymous (4)

\$1 - \$999
Natalie Q. Albers
Karen Arras
Susan Barbarossa, BB '96
David C. Betts, PA '72
Robert P. Burchard
Susan Cheever
Elizabeth W. Clark, BB '96
Kevin & Carol Cleveland
Debra Cyr, PA '93
Ray Davies, PT '86
Elliot Bostwick Davis &
John S. Paoella
Betsy Palmer Eldridge
Pamela Ely, PT '13
Anders Engle
Stanton M. Felton, CF '01
Fabio Fernandez & Christine Dunn

Crystal Fielding, PA '07
Lawrence Fine, PT '76
First Parish Dorchester
Lori Foley, BB '95
Beth Ann Gerstein
T. Rheuben Gibson, Jr., CF '00
Ken Gilbert, BB '10
Rosemary L. Gilbert
Andrew Glasgow
Robert Goodman
Rex & Gay Holsapple
Christine Jankowski
Christopher Kendig, PT '00
& Zoe A. Sherman, PT '00
Edward Klein, PT '72
Jay & Cynthia Knox
Alexander Krutsky, CF '81
& Maggie McNally
Lawrence Lapson
Thomas Lee, CF '88
Loy Martin
Thomas McAndrews, CF '03
John P. McCormack, CF '88
Angela McGrath, JM '93
Brittany Molloy-Kenney
John Nove, BB '07
John F. O'Regan, BB '97
LaDawn Payne, PT '06
Alan Phillips, PA '85
Regina & Charles Pineo, CF '06
Jonathan E. Pucker
Marion Rabinowitz, PT '78
Thomas N. Rogers, CF '76
Ronald Santos
Robert & Judy Scherzer
Cy Shuster, PT '06
Lisa Sinclair
Karen Solomon
Edmund C. Toomey
Ronald, CF '69 & Joyce Trapasso
Richard & Lisa Tucker
Joseph H., CF '79 & Annie Twichell
Ruth Van Dine, PA '00
Rodney Yeh, PA '10
Anonymous (2)

Gifts of Goods
& Services

Geir Boger
Brookline Lock Company
Scott Bunn
Marcia Casey
Robert Chapman
Commonwealth Lock Co.
Dampp-Chaser Electronics
James Dooley, LK '93
Richard A. Friedman, PA '86
James Kfoury
Teresa McCauley
Charles McGinn
David Nadworny, PT '78
Carol O'Hare
Joan Parcher

Pasek Corporation
Peabody Essex Museum
Reyburn Piano Tech
Eric Roberts
John Shillingford
Daniel R. Spirer Jewelers, LLC
Steinway & Sons
Mark & Laura Till
Saeqa Dil Vrtilek
Kaethe Weingarten
Wessell, Nickel, & Gross
Mr. and Mrs. Werner Willmann

Supporters of
the 14th Annual
Evening of
Traditional Craft

May 14, 2013
Two International Place

PRESENTING SPONSOR (\$10,000)
Carl & Judy Ferenbach

UNDERWRITER (\$5,000)
Bond
Bruce & Lynn Dayton
Bob & Bobo Devens
First Republic Bank
Barbara & Amos Hostetter
Pomeroy & Co., Inc.

BENEFACTOR (\$2,500)
The Chiofaro Company
E.M. Duggan Inc.
Firestone & Parson Inc.
John. F Gifford, JM '97 CF '01
& Brigid Sullivan
Lynch & Lynch, Attorneys
Adrienne & Mitchell Rabkin
Sunrise Erectors Inc.

2ND CENTURY PATRON (\$1,250)
William T. & Louise Burgin
Cambridge Trust Company
Roy & Susan Coppedge
Eaton Vance Investment Counsel
Hemenway & Barnes LLP
Inland Underwriters
Insurance Agency, Inc.
Carol Burchard O'Hare
& Walter H. McDonald
Pasek Corporation
S&F Concrete Contractors, Inc.
Steven B. Soppe

PATRON (\$1,000)
Anchor Capital Advisors, LLC
Enid L. Beal
Jeannie & Henry Becton, Jr.
McKey, BB '11 & James Berkman
Phyllis & David Bloom
Braver PC
Carlysle Engineering

C. Forbes & Carolyn Dewey
Eck MacNeely Architects
F.H. Perry Builder
FBN Construction Company
Fox RPM Corp.
Gaston Electric
John & Ann Hall
Peder C. & Ali Johnson
Charles, CF '05 & Charlotte Kline
Kochman Reidt + Haigh
Cabinetmakers
Robert & Heidi Manice
The McConnell Family
Tish & Steve Mead
MIW Corporation
Osborn Studios +
Payne/Bouchier, Inc.
Pella Windows & Doors, LLC
David Polstein, VM '89
& Emily Stavis
Pre-Con Construction
S+H Construction, Inc.
Allen Snyder & Susann Benoit
Lewis, PA '80 & Toni Surdam
Susan F. Surdam
Elizabeth Thomson
Lisa von Clemm
J. Hunter & Candy Walton
Tim & Mary Williams
Jane & James Wilson
Woodmeister Master Builders

SPONSOR (\$500)
Joel Alvord & Lisa Schmid
Anderson & McQuaid Co. Inc.
David Arnold & Ann Moritz
George & Barbara Beal
Jackie Blombach, PC '02
& Michael Duca
Katharine Boden
Tim & Mare Rose Bolton
William & Nannette Braucher
Brooks + Hill Custom Builders, Inc.
Fenton J. Burke, CF '95
Walter & Helen Burrage, Jr.
Cavalieri Construction
Company Inc.
Central Ceilings, Inc.
Richard & Betsy Cheek
F. Sargent Cheever
H. Nichols B. Clark
Kevin & Carol Cleveland
Mr. & Mrs. William C. Coleman
Commonwealth Building Systems
William G. Creelman
Prescott & Joan Crocker
D'Agostino Izzo Quirk
Architects, Inc.
Jeremiah, CF '84 & Amy de Rham
George & Leigh Denny
Mr. and Mrs. William L. Devens
Dewing & Schmid Architects
Thomas Divilio
William & Sarah Ducas
John & Cynthia Everets

Denise M. Fenoglio, JM '06
Miguel Gómez-Ibáñez,
CF '99 & Fay Larkin
Deborah & Arthur Hall
Jeri Hamlen & Joe Hammer
Burton, CF '97 & Shirley Harris
Deborah M. Hauser
Herrick & White
Architectural Woodworkers
William, CF '07 &
Corinna Hettinger
Nancy J. Hoffman
Jonathan Bailey Holland
& Sarah C. Long Holland
Edward & Marianna Howland
John M. Kennedy & Co., Inc.
Kennedy & Violich Architecture
Vin, CF '13 & Becky Kennedy
Michael & Claire King
Joseph L. & Peggy R. Kociubes
Catherine C. Lastavica
David & Susan Lawrence
Edward P. Lawrence
David W. Lewis, Jr.
Parker & Marie Llewellyn
Stephen & Jane Lorch
M. F. Reynolds, Inc.

Philip G. Maddock
The McConnell Family
Paul & Carla McDonough
James McNeely Architects
Caroline Mortimer
& Richard Grubman
Richard, CF '05 &
Marie, BB '02 Oedel
Robert & Elizabeth Owens
Jane E. Manopoli
Isabel Perkins
Elizabeth & David Powell
Chris Rifkin
James & Sandy Righter
Edward P. Roberts, Jr.
& Susan U. McIntosh
Rockler Woodworking & Hardware
Charles Sawyer
Paul A. Schmid III
Skinner Inc.
Normand Smith
Daniel R. Spirer Jewelers, LLC
Nancy & Edward Stavis
Peter H. Talbot
J. Arthur, CF '00 & Jeannette Taylor
Thoughtforms Corporation
Edmund C. Toomey
Stephen Tucker & Peggy Garland
Eliot & Annick Wadsworth, III
David & Susan Williams
Patrick Calhoun Hickox
& Brigid Williams
Mr. & Mrs. Patrick Wilmerding
William & Madolyn Wilson
Joseph W. Worthen II
Anonymous

CONTRIBUTORS
Andrew Birsh
Peter & Anne Brooke
William T. & Louise Burgin
Linzee & Beth Coolidge
First Parish Church
Richard Freeland
Fuller Craft Museum
Diane Georgopoulos
Devens H. & Sandy Hamlen
John & Brooke Heraty
Mr. & Mrs. Arthur C. Hodges
Barbara R. Kapp
Robert & Arrel Linderman, III
Stephen Morrison
John S. Reidy
Karen Schwartzman
Patricia Tucker
Lisa von Clemm
Hugh Warren
90.9 WBUR, Boston's NPR
News Station
John W. Weeks, Jr.
Robert & Jane Weiss
Peter & Jeanne Yozell
Anonymous

Partners in Craft
*Trade contractors, architects
and suppliers that have a strong
affinity with the mission of
NBSS and support the school
through the Annual Evening
of Traditional Craft.*

Albert, Righter & Tittmann
Architects, Inc.
Ann Beha Architects
Brooks + Hill Custom Builders, Inc.
D. Michael Collins Architects
Dewing & Schmid Architects
Eck MacNeely Architects
F.H. Perry Builder
FBN Construction Company
Feinmann, Inc.
Frank Shirley Architects
Hacin + Associates
Howard Brothers Builders
Hutker Architects
Incite Architecture
Bruce Irving Rennovation
Consultant
Kenneth Vona Construction, Inc.
Landmark Services
Lda Architecture & Interiors
Jonathan Levi Architects, Inc.
M. F. Reynolds, Inc.
Marcus Gleysteen Architects
Frank McGuire Architects
James McNeely Architects
Mead Consulting
Meyer & Meyer Architecture
and Interiors
Moskow Linn Architects
Nicholaeff Architecture + Design

Olson Lewis + Architects
Osborn Studio +
Payne/Bouchier, Inc.
Pomeroy & Co., Inc.
Robert Lawrence Builders
S+H Construction, Inc.
FBN Construction
Siemasko + Veridge
Stantec
The Lagasse Group
Thoughtforms Corporation
Marc J. Truant & Associates, Inc.
Wells & Fox
Hickox Williams Architects
Woodmeister Master Builders

Continuing
Education
Programs
*Offered between August 1, 2012
and July 31, 2013*

BOOKBINDING
Fundamentals of bookbinding I
*Erin Fletcher
Amy Lapidow*

Fundamentals of bookbinding II
*Erin Fletcher
Amy Lapidow*

Paper cutting
Limp-vellum binding
Stacie Dolin

Embellishing cloth-case bindings
Millimeter binding
Erin Fletcher

Hanji workshop
Minah Song and Aimee Lee

Paper marbling
Turkish Ebru marbling
Chena River Marblers

Bookbinding boxes and enclosures
Amy Lapidow

WOODWORKING
Fundamentals of machine
woodworking
*Sam Chase
Mike Greenberg
Ellen Kaspern
Matt Wajda*

Fundamentals of fine woodworking
*Sam Chase
Mike Greenberg
Judith Hanson
Ryan Messier*

Intermediate fine woodworking
*Andy Glenn
Ryan Messier*

Machine woodworking:
upholstered headboard
Ellen Kaspern

Machine woodworking: routers
Matt Wadja

Decorative inlay
Sam Chase

Three-month furniture intensive
Flat-edge tool sharpening
Jamey Pope

Shaker oval box-making
Judith Hanson

Drafting for furniture
John McCormack

Introduction to letter carving
Introduction to relief carving
Janet Collins

Teen woodworking: bird house
Andy Glenn

LATHE WORKSHOP
Turning a square bowl
Janet Collins

Spindle turning
Brian McQuay

Intro to bowl turning
Intermediate bowl turning
Rich Friberg

A weekend with “skew”
Alan Lacer

CARPENTRY
Hanging doors and windows
Drywall for beginners
Intro to shutters
Window sash restoration
Bill Rainford

Platform Framing
Jamey Pope

Fundamentals of cabinet making
Intro to interior trim
Brian Vogt

METALS AND JEWELRY
Fundamentals of jewelry making I
Fundamentals of jewelry making II
Jewelry making directed study
Faceted-stone setting
Bezel setting
Cold connections
Lestie Hartwell

Fundamentals of brass hinges,
not just for Jewelers
Sue Agarn-Kawaalski

Argentium silver fusing:
granulation and soldering
Cynthia Eid

CALLIGRAPHY
Hand lettering, five styles
Fundamentals of Italic lettering
Accordion book
Manuscript gilding
Copperplate script
Calligraphy concertina
Maryanne Grebenstein

**LET’S WORK TOGETHER
YOUTH WORKSHOPS**
Robot
Wooden spoon
Andy Glenn

Robot
Flower box
Flying swan
Wooden boat
Treasure chest
Ryan Messier

LECTURES AND TOURS
Reflections of a Bookbinder
Sam Ellenport

Hanji Unfurled, a Journey into
Korean papermaking
Aimee Lee

Historic Walk of Brattle Street
Cambridge
Stephen O’Shaughnessy

Manuscript classroom abroad
trip to Europe
Maryanne Grebenstein

An Evening with Alan Lacer
Alan Lacer

Turning Around America
Beth Ireland

Exhibitors

**PROVIDENCE FINE
FURNISHINGS AND
CRAFT SHOW**
November 2–4, 2013

Boyd Allen, CF ’13
Christine Ameduri, BB ’14
Armand Aromin, VM ’13
Evan Berding, CF ’14
Nils Berg, CF ’13
Carolyn Bird, CF ’13
Emmanuel Boursiquot, PC ’14
Evan Court, CF ’14
Hal Curry, CF ’14
John D’Ambruoso, CF ’13
Isaac Fay, CF ’13
Robert Harhen, CF ’13
Meredith Hart, CF ’14
Dongil Kim, CF ’13
Augustus Lammers, CF ’13
Annette Sophie Lippert, CF ’14
Grant Lutz, CF ’14
Nathalie Marquis, CF ’13
Edward McCormack, CF ’13
Roger Myers, CF ’14
Michael Ogden, CF ’13
James Rodgers, CF ’13
Charlie Ryland, CF ’14
Jonathan Stong, CF ’14
Paul Whitehead, CF ’13

CRAFT BOSTON
APRIL 18-21, 2013
Robert Harhen, CF ’13
Boyd Allen, CF ’13
Zoe Beatty, JM ’14
Carolyn Bird, CF ’13
Alexander Brockway, JM ’14
Joseph Corigliano, CF ’14
Evan Court, CF ’14
Marie Delaney, CF ’13
Cris Dicke, CF ’13
Charles Hamm, CF ’13
Lauren Kelly, JM ’14
Kaitlyn Kennedy, JM ’13
Paul Vincent Kennedy, CF ’13
Annette Lippert, CF ’14
Mechelle Lois, JM ’14
Grant Lutz, CF ’14
Nathalie Marquis, CF ’13
Eileen Melville, CF ’14
Roger Myers, CF ’14
Andrew R. Silverman, CF ’14
Tyler St. Gelais, JM ’14
Max Traynor, JM ’14
Baleigh Wark-Acebo, JM ’14

STUDENT & ALUMNI EXHIBIT
MAY 12 – 26, 2013
Two International Place

Boyd Allen, CF ’13
Christina Amato, BB ’07
Armand Aromin, VM ’13
Nancy Baker, BB ’13
Avery Bazmore, BB ’13
Katherine Beard, JM ’07
Zoe Juanita Beatty, JM ’13
Walter Beebe-Center, PC ’94
Evan Berding, CF ’14
Laurie Lynn Berezin, JM ’11
Nils Berg, CF ’13
McKey Berkman, BB ’11
Carolyn Bird, CF ’13
Ben Blackmar, CF ’14
Steve Brown, CF ’90
Ann Cahoon, JM ’02
Ilah Cibis, JM ’05
Eli Cleveland, CF ’09
Mike Codispoti, CF ’11
Nick Collins, CF ’14
Gabby Cooksey, BB ’14
Evan Court, CF ’14
Marie Delaney, CF ’13
Erin DeLuca, JM ’11
Barry Desrosiers, CF ’00
Cris Dicke, CF ’13
Nathaniel Emerson, PC ’14
Peter Feinmann, CA ’83
Sam Feinstein, BB ’12
Denise Fenoglio, JM ’06
Cynthia Fields-Belanger, BB ’97

Ryan Fini, VM ’14
Erin Fletcher, BB ’12
Nancy Fresella-Lee, BB ’12
Kate Gakenheimer, PC ’98
Paula Garbarino, CF ’88
John F. Gifford, JM ’97 CF ’01
Ken Gilbert, BB ’10
Cornelia Goldsmith, JM ’91

Jeanne Goodman, BB ’13
Gary Green, CF ’97
Barbara Halporn, BB ’06
Chalres Hamm, CF ’13
Robert Harhen, CF ’13
BA Harrington, CF ’95
Meredith Hart, CF ’14
Leslie Hartwell, JM ’06
Barbara Adams Hebard, BB ’90
Alcamy Henriksen, BB ’14
John Herbert, CF ’06
Lisa Hunt, JM ’03
Jessica Karlinsky, JM ’12
Lauren Kelly, JM ’14
P. Vincent Kennedy, CF ’13
Kait Kennedy, JM ’13
Katrina Kiapos, BB ’13
Kelly Kinser, JM ’13
Augustus Lammers, CF ’13
Amy Liapidow, BB ’95
Kaley Ledwidge, JM ’14
Nancy Lev-Alexander, BB ’91
Mechelle Lois, JM ’14
Celine Lombardi, BB ’11
Thomas MacDonald, CF ’02
Kevin Mack, CF ’08
Nathalie Marquis, CF ’13
Eva Martin, JM ’03
Colleen E. Matthews, JM ’12
Steve McCarthy, JM ’09
Edward McCormack, CF ’13
Cedar McKee, JM ’13
Paul McNulty, PA ’80
Sharina Mirpuri, JM ’14
Roger Myers, CF ’14
Akiko Nakahata, JM ’04
Marie Oedel, BB ’02
Richard Oedel, CF ’05
Michael Ogden, CF ’13
Sara Pancoast, JM ’12
Geraldine Kish Perry, JM ’00
Sarah Phetteplace, JM ’13
Earl Powell, CF ’08
Devin Ream, CF ’09
Robert Richard, CF ’97
Betsy Roper, BB ’13
Francis Ryan, CF ’88
Erika Sanchez Goodwillie, PC ’01
Lauren Schott, BB ’13
Emily Scott, JM ’07
Doug Scott, Workshops
Kevin Sheby, BB ’13
Katie Simonetti, JM ’10
Jonathan Stong, CF ’14
Seth Tanguay, JM ’07
William Thomas, CF ’80
Cyle Thomas, JM ’13

Leslie To, BB ’14
Rosemary Trainor, JM ’90
Colin Urbina, BB ’11
Baleigh Wark-Acebo, JM ’14
Brian Weldy, CF ’01
Paul Whitehead, CF ’13
Bradley Wolcott, CF ’12

CARPENTRY
Patrick O’Shaughnessy, CA ’06

JEWELRY MAKING
Rosemary Trainor, JM ’91
Department Head
Lisa Hunt, JM ’03
Eva Martin, JM ’03

LOCKSMITHING
David Troiano
Department Head

PIANO TECHNOLOGY
David Betts, PA ’72
Department Head
Debbie Cyr, PA ’93
Christine Lovgren, PA ’81
Jack Stebbins, PA ’83

PRESERVATION CARPENTRY
Rich Friberg, PC ’04
Steven O’Shaughnessy, PC ’99
Department Head

VIOLIN MAKING & REPAIR
Roman Barnas
Department Head

Students

BOOKBINDING
Christine Ameduri
Nancy Baker*
Avery Bazmore*
Marianna Brotherton
Gabrielle Cooksey
Elizabeth Curran
Jeanne M. Goodman*
Alcamy Henriksen
Katrina Kiapos*
Elizabeth A. Roper*
Lauren Nicole Schott*
Kevin Sheby*
Leslie To
Erica Veil

CABINET & FURNITURE MAKING
Donna Adams
Boyd William Allen*
Evan Berding
Nils Berg*
Michael Bernstein
Carolyn Bird*
Ben Blackmar
Joshua Brucker
Zachary Coggeshall
Nicholas Collins
Joseph Corigliano
Evan Court
Hal Curry
John F. D’Ambruoso*
Marie K. Delaney*
Cris Dicke*
Jesse Dominello
Lisa Dorau
Isaac Z. Fay*
Donna Fisher
Charles Hamm*
Robert P. Harhen*
Matt Harmon
Meredith Hart
Richard D. Huhn*
Justin Johnson
Paul Vincent Kennedy*
Dongil Kim*
Samuel Kott
Augustus J. Lammers*
Annette Lippert
Christopher Littlefield
Sean Joseph Lohmar*
Grant Lutz
Nathalie Marquis*
Edward Ryan McCormack*
Eileen Melville
David Montoya
Roger Myers
Michael Edward Ogden*
James C. Rodgers*
Charles Ryland
Caleb Schultz
Matthew Shuster
Andrew R. Silverman
Jonathan Stong

P. Alta Tarala*
Dane Visnick
Paul David Whitehead*

CARPENTRY
Philip Melo Benevides*
Thomas Ryan Cincotta*
Brendan Dean*
William Glynn*
Robert A. Harrison*
Matthew Hebert*
Quang H. Lam*
Ivan Oliinyk*
Lawrence Ricketts*
John Paul Sheehan*
Alex K. Taylor*
Douglas Turnbull*
Eric J. Zankowski*

JEWELRY MAKING
James Allen*
Zoe Juanita Beatty*
Alexander Brockway
Cindy Carter



Elijah Davenport
Travis Palmer Dean*
Christine Doyle
Lauren Kelly
Kait Kennedy*
Kelly Marie Kinser*
Kaley Ledwidge
Mechelle Lois
Carrie McFerren
Cedar Goldman McKee*
Sharina Mirpuri
Sarah E. Phetteplace*
Alexandra Rahmann
Chris Roi
Catherine Y. Rosano
Charles Saldi
Tyler St. Gelais
Elizabeth Taylor
Cyle Cabral Thomas*
Max Traynor
Krisztina Vagenas
Baleigh Wark-Acebo

LOCKSMITHING

Kevin A. Amici*
Carl Blomendele
Joshua Bradford*
Earl Colter
Eddy Michel Dacius*
Dennis Elwell
Matthew Glick*
Andy Hopper*
Matthew J. Kirylo*
Phillip McKinnon
Kenneth M. Murphy*
Griffin Myers*
Joseph C. Naffah*
Mike Richards*
Eamon F. Thrall*
Daniel Walker*
Max Worth*

ADVANCED PIANO TECHNOLOGY

Chun-Yen, Chen*
Pamela Ely*
Brian Hubbell*
Charles Hudson*
Michael Turano*
Keith Ward*
Hillary Leighton York*
Jiaao Yu*

BASIC PIANO TECHNOLOGY

Timothy K. Dudley*
Etienne Fillion*
Andrew Cort Gillispie*
Deirdre F. Hill*
Alexander Edward Moore*
Peter Omalyev*
David A. Roche*
Justin Rose*
Donovan Cory Sheets*
Panagiotis Tsigkos*
Brian Turano*
Jonathan Valentine*

PRESERVATION CARPENTRY

Emmanuel Boursiquot
Stephen Casey
Caleb Klimpton Clark*
Nathaniel Emerson
Oliver Fifield*
Joshua Giampietro*
Andrew William Hayes*
Zach Heir
Karl Hendrickson
Victoria Vieno Jackson*
David Jones
Lam La*
Andrew Peter Leyland*
Thomas Maloney*
Joseph McAllister
Matthew Morrison
Ian Newton
Mindy Otten-Chen
David Robert Rosen*
Aaron Charles Tardiff*
Evan Taubes
Jesse Turgeon*
Mary Webb
Brahm Wilson

VIOLIN MAKING & REPAIR

Armand Dale Aromin*
Garrett Becker*
Jackson Chase
Jedidjah de Vries
Gabriel Denton
Hans Ebenau
Julia Felix
Ryan Fini
JaeIn Lee
Daniel McIrvin
Francesco Rowe
Ryan Stulb
Bryan Worley

* Class of 2013

Advisors

BOOKBINDING

Mary Patrick Bogan
Samuel Ellenport
Doris Freitag
Babette Gehnrich
Paul Parisi
James Reid-Cunningham, BB '90
Stuart Walker
Deborah Wender

CARPENTRY

Peter Feinmann, CA '83
Kurt Fieldhouse, CA '93
Edward Howland
Barry Mann, PC '97
Arthur Massaro

CABINET & FURNITURE MAKING

Mark Del Guidice
William Doub, CF '74
Sean Fisher, CF '94
Brian Kelly, CF '84
John LaGattuta, CF '88
Greg Porfido, CF '89

JEWELRY MAKING

Ann B. Cahoon, JM '02
John F. Gifford, JM '97, CF '01
Geraldine Kish-Perry, JM '00
Barbara Lawrence
Alan Leavitt
Emily Scott, JM '07
Daniel Spirer
Bill Verge

LOCKSMITHING

Lewis Alessandrini
John Hobin
Stephen McKinney
Virginia M. Newbury
Michael Samra, LK '87
Jeffrey G. Schwartz

PIANO TECHNOLOGY

George Crawford
Larry Fine, PT '76
Don Mannino
Christopher Robinson
Lewis J. Surdam, PA '80

PRESERVATION CARPENTRY

Robert A. Adam
William Lewis Barlow, IV
Michael Burrey
Sara B. Chase
William Finch
Anne Grady
Andrew Ladygo
William McMillen

VIOLIN MAKING & REPAIR

Chris Germain
David Polstein, VM '89
Christopher Reuning
Andrew Ryan
Marilyn Wallin
Chris White, VM '88

Administration

Miguel Gómez-Ibáñez, CF '99
President

Claire Fruitman, CF '96
Provost

Boyd Allen, CF '13
Resident Superintendent

Frank Baird
Building Manager

Ken Craggs, CF '07
Gallery Manager

James Dergay
Director of Financial Aid

Lillian DiGiorgio
Reception

Amber Duntley
Admissions Coordinator
(August – March)

Jason Gregoricus
Director of Student and
Alumni Services

Lana Jackson
Director of Diversity and Inclusion

Christine Jankowski
Director for Annual Giving

Nancy Jenner
Director of Communications
and Strategic Partnerships

Megan Kenealy
Director of Continuing Education

Jay Knox
Administrator

Robert O'Dwyer
Director of Admissions

Sheila D. Perry
Director of Foundation and
Corporate Support

Brittany Molloy-Kenney
Development Coordinator

Ronald Santos
Custodian

Maria Schauer
Business Manager/CFO

Karen Solomon
Director of Development

Sharon Stetson
Admissions Coordinator

150 North Street lit
for the preview party
in November 2013.

PHOTOGRAPHY

COVERS
KVA ARCHITECTURE

PAGES 2, 3, 5, 11, 14, 16, 17, 22
HEATHER McGRATH

PAGES 3, 5, 10, INSIDE BACK COVER
GREG SCHUPPE

PAGE 13
DON WEST PHOTOGRAPHY

DESIGN
KATE NAZEMI

“At the beginning of this project there were some, including me, who thought it would be difficult to leave the old building and all its history. But, as the new building took shape, I recognized the exciting possibilities and now those possibilities are becoming realities. Simply by stepping in the front door, anyone who had doubts is won over and excited about what the new building means for the future of the school.”

CLAIRE FRUITMAN, PROVOST

VIOLIN MAKING

LOCKSMITHING

NORTH BENNET ST. SCHOOL

150 NORTH STREET
BOSTON, MASSACHUSETTS 02109

Nonprofit Org.
U.S. Postage
PAID
Boston MA 02113
Permit No. 52223



2013 ANNUAL REPORT

