





Contents

WELCOME

Letter from the President 2

FEATURES

Charting the Course 4
Crafting History 6
An Inviting Conversation 12
Maintaining Excellence 16

ACTIVITIES & ADMINISTRATION

Administration 20
Activities 24
Financial Overview 28

OUR DONORS

The Shaw Society 34
The NBSS Fund 36
Grants 40
Partners in Craft 41
Restricted Gifts 42
NBSS General Scholarship Fund 43
The 1881 Society 43
Gifts to Named Funds 44
Gifts In-Kind 45
NBSS Named or Endowed Funds 45

Dear Friends,

As we reflect on another remarkable year at North Bennet Street School, I am filled with gratitude and pride for the progress we have made together. This year's achievements underscore our collective dedication to our mission of providing an exceptional, transformative education in craft and trade.

First and foremost, thank you to the many donors who are listed in this Annual Report. Your generous contributions have been the backbone of our continued success, enabling us to expand our reach, enhance our facilities, and provide meaningful scholarships to deserving students. We are deeply grateful for your unwavering support, and are excited for all that we'll accomplish together in the years ahead.

This past year has brought significant changes to NBSS, many of which are highlighted in this publication. As you'll read, we continued with initiatives that enhance our curriculum, expand our reach, and ensure the sustainability of our institution. These efforts have fostered innovation in our educational offerings, and reinforced our leadership in our fields. Ultimately, they advance our ability to provide students with a life-changing experience toward reaching their highest potential.

As we look ahead, I am thrilled to announce the launch of *Meaningful Work*, a targeted fundraising effort aimed at growing our annual resources for near-term opportunities, and investing in our endowment to further secure our future. The support generated through this campaign will enable us to broaden access to our training, support faculty in delivering the highest quality instruction, position our fields for the future, and continue to serve our community for generations to come.

I invite each of you to join us at this exciting time. Whether you are an alum, donor, partner, or friend, your involvement is crucial to our success. I hope you will reach out to learn more about how you can contribute, as the possibility of our School includes all of us. Your generosity, time, and advocacy will help us continue to transform lives through the power of hands-on education.

Thank you for being an integral part of the NBSS community. Together, we are building a future where skilled hands and creative minds shape a better world.

With gratitude,



SARAH TURNER, PRESIDENT



WITH GRATITUDE

All of us at the School extend our heartfelt thanks to our outgoing Board Chair, **Genie Thorndike CF '16**, for her steadfast leadership that guided NBSS through significant growth. Under her tenure, we strengthened our programs and our volunteer groups, laying a strong foundation for the future. We have all benefited from her dedicated partnership.

As Genie steps back, we are pleased to welcome our new Board Chair, **Tom Piemonte**. With his wisdom, passion, and vision, we look forward to continued success and collaboration.



Charting the Course

Achieving Our FY23–FY28 Strategic Plan

In December 2022, we introduced a comprehensive strategic plan to fortify our School's position as a beacon of craft and trade education. Two years in, this visionary plan is unfolding through the collective energy and effort of staff, faculty, and supporters across NBSS. Together, we are poised to continue this momentum, driving growth and transformation in the years ahead.

Expanding Reach & Access

Since unveiling our plan, we have initiated several strategic efforts to engage both new and existing communities while attracting a broader spectrum of students. These initiatives are not only elevating our profile, but also making the unparalleled training at NBSS more accessible than ever before.

- ✓ Achieved historic year-over-year growth in inquiries for Career Training programs and Community Education classes, nearly doubling our full database in the last three years.
- ✓ Increased enrollment in key programs, including Jewelry Making & Repair, Preservation Carpentry, Violin Making & Repair, and Cabinet & Furniture Making, while sustaining class sizes in most other programs.
- ✓ Appointed a Director of Community Education (CE) to stabilize and grow offerings for adults, youth, partners, and others.
- ✓ Created a new CE Coordinator position, helping to grow our class offerings and partnerships.
- ✓ Expanded CE classes to an unprecedented number of offerings this past fiscal year, bringing about our five highest monthly registrations ever.
- ✓ Grew CE partnerships, including those for high school youth (Madison Park), underrepresented individuals (The Chairmakers Toolbox), and veterans (Boston Vet Center).
- ✓ Expanded our digital audience through strategic initiatives such as our *In The Making* public programming.
- ✓ Increased attendance at in-person events, including our Open House, reaching historic numbers for total registrations and new contacts.

Supporting Excellence for Faculty & Students

Our unwavering commitment to a transformative education guides every decision we make. To sustain this, we provide our faculty with the necessary resources to deliver exceptional instruction. We also extend financial, career, and integrated “wrap-around” support to our most important constituency: our students.

- ✓ Established and expanded a Teaching Assistant (TA) program, ensuring the Career Training Programs are supported by Teaching Assistants, with roles tailored to each program's needs.
- ✓ Provided over \$1,000,000 in financial aid to qualified students in FY22, FY23, and FY24.
- ✓ Conducted a comprehensive salary study for all faculty and staff, resulting in increased compensation that aligns with industry standards, and acknowledges the unique skill set of our instructors as both practitioners and educators.
- ✓ Made thoughtful increases in CE Instructor rates to maintain and grow a deep bench of talent across disciplines.
- ✓ Redefined and hired for the Director of Student Support & Career Services role to better serve our students before, during, and after attending NBSS.

Strengthening Our Operations & Identity

Securing the long-term sustainability of NBSS is a cornerstone of our strategic plan. We have undertaken several critical projects to enhance our operations, strengthen our facility, and ensure financial stability. These initiatives are designed to honor our rich legacy while adapting to the evolving needs of our institution and the broader community.

- ✓ Created an NBSS Values statement, a foundational tool supporting faculty, staff, students, and our broader community.
- ✓ Developed the position and hired a Senior Director of People & Operations.
- ✓ Implemented and adopted new data and information systems, including platforms for Development and Admissions, enhanced internet access/stability, and networked storage solutions.
- ✓ Increased the diversity of NBSS volunteer leadership.

Support our strategic priorities by contacting Colleen Walsh Powell, Director of Development at cwpowell@nbss.edu or 617-227-0155 x170.

This year, we will call on our entire community to contribute to our growth and success, through annual giving and focused endowment growth. With your support, we will lead the way to ensure that NBSS remains a place where every individual can realize their full potential.

Crafting History: Rare Tools Back in Action

Student-Crafted Display Cases Showcase Timeless Tools for Bookbinding and Preservation Carpentry

Once in a while, the perfect elements for a big project just line up. That's exactly what happened this year when **Laurence "Laurie" Lombard** made a generous gift to the NBSS Fund.

Boosted by Laurie's gift—and all gifts to the Fund—rare tool collections gifted to the Bookbinding and Preservation Carpentry programs are now fittingly displayed in well-crafted cabinetry built by Carpentry (CA) students.

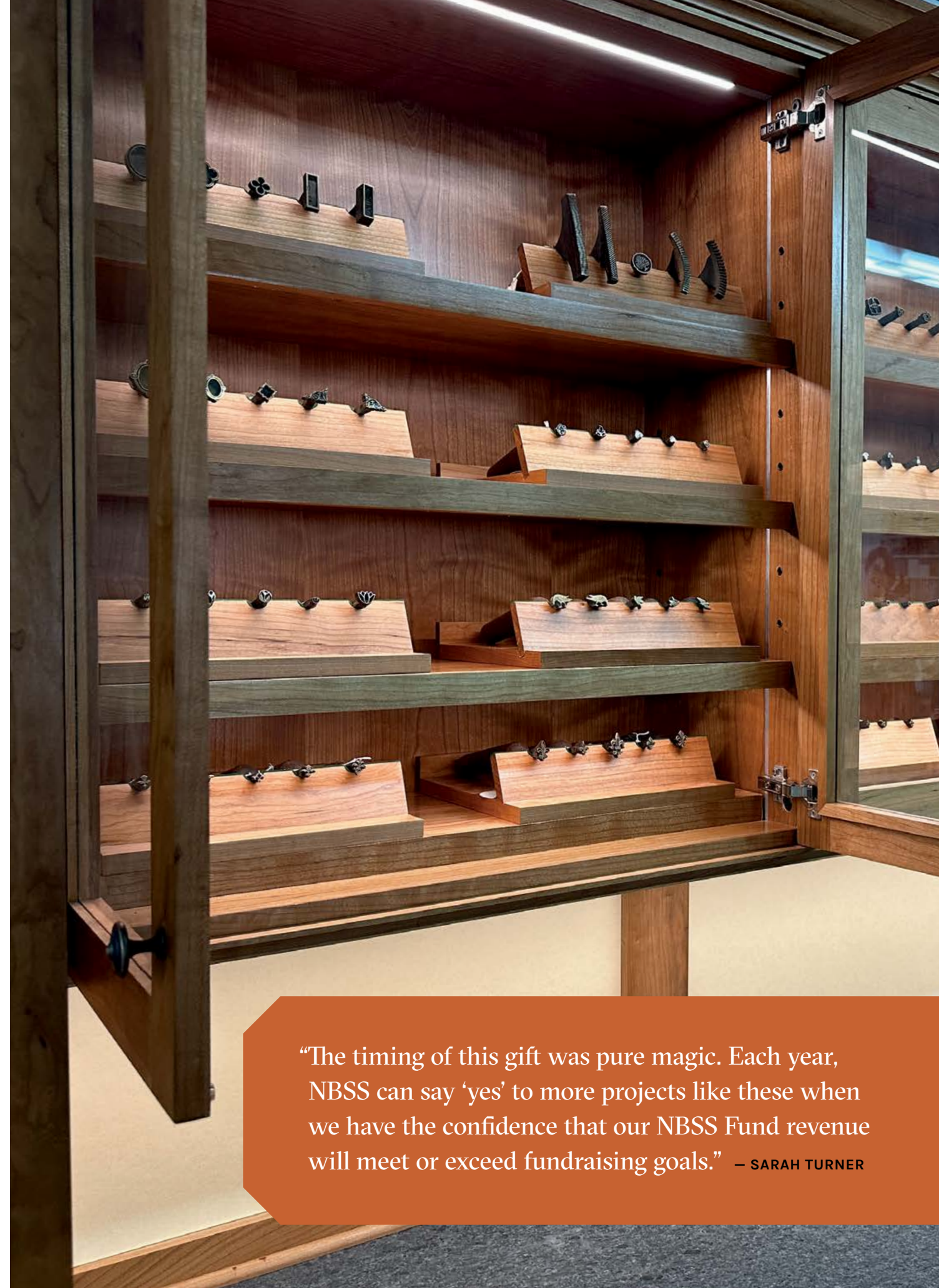
Though properly showcased, the rare tools aren't intended to be museum pieces that sit untouched. They were donated to NBSS with the intention that they would be cared for properly and actively used by NBSS students.

"NBSS is known in craft and preservation circles as a place that not only appreciates collections like these, but in the right circumstances can also put them to use," said NBSS President **Sarah Turner**. "The various tools and brasses for Bookbinding, and the wood molding planes given to Preservation Carpentry, are all gorgeous objects. It's easy to imagine the complex and sophisticated work that our students can take on with access to these rare tools."

The Lombard family has been part of the NBSS story across multiple generations. Laurie's father was an attorney at Boston-based law firm Hemenway & Barnes and served as Board member for the School in the 1960s.

Since receiving the donated collections a few years ago, the School had hoped to build proper showcases to preserve and protect the rare tools. When Laurie asked that his gift go to an immediate need, he was delighted to learn it would help make this project possible.

"The timing of this gift was pure magic," Sarah shared. "Each year, NBSS can say 'yes' to more projects like these when we have the confidence that our NBSS Fund revenue will meet or exceed fundraising goals. There's no other way around it, unrestricted funds make this School run... from supplying lumber, to stocking the food pantry, and funding a student project like this. I am so happy to see this work move forward with generosity like Laurie's."



"The timing of this gift was pure magic. Each year, NBSS can say 'yes' to more projects like these when we have the confidence that our NBSS Fund revenue will meet or exceed fundraising goals." — SARAH TURNER



Building the Showcases

CA Department Head **Peter Smith PC '04** saw this project as a great learning opportunity for students. He approached CA Instructor **Brock Leiendecker PC '16**, CA graduate **Eric Zankowski CA '13**, and Cabinet & Furniture Making graduate **Kolin Schmidt CF '21** to assist with the cabinetry's design. When Peter transitioned to off-site client work with the Carpentry class, Brock took over and was instrumental in seeing the cabinetry project through, from initial build through to installation.

For Bookbinding, the large-scale showpiece incorporates high-end features (Hafele lighting, leather backplash (not shown), glass doors backed by marbled paper), while the Preservation Carpentry cabinet is similarly designed but less ornate. Both are readily accessible by their respective programs, and each of the rare tools will enjoy a second life in the hands of NBSS students for years to come.

“We make sure that any lesson in cabinetry is not an assembly line. Students were paired up to get the chance to work on all steps of the building process, from learning the necessary nomenclature of the parts and tools to drafting, building the plywood carcasses, and milling the doors and glass door fronts with cup hinges and hardware.”

— BROCK LEIENDECKER PC '16



One student who got a tremendous amount out of the process was **Frank Marr CA '24**, who came to NBSS from a previous career in property management. Frank was always someone who loved working with his hands but “ignored the instinct” until it became obvious that he was far more interested in working alongside the skilled tradespeople at work than managing them from a desk.

The cabinet project served as Frank’s swan song at NBSS. Before Commencement, the bookbinding tools cabinet was installed in the hallway outside the School’s conference room, where students posed for photos with a lot of pride.

Frank learned a new skill or tool every single day that he worked on the cabinet projects, know-how that will help him at the new job he’s started in residential carpentry. “This program gave me the knowledge I needed to make a living in an industry that makes me happy,” Frank shared.

Speaking to the full project, Brock shared, “This project was a unique opportunity for our students to not only hone their technical skills but also to connect with different programs and honor a legacy of fine craftsmanship. Seeing their pride in the final product and knowing it will serve future generations is incredibly rewarding.”



About the NBSS Fund

Every year, members of the NBSS community and its wider network of supporters generously give to the NBSS Fund, which aims to meet the School’s greatest needs and operating costs. You can support the next generation of skilled tradespeople with your gift of any size to this critical source of funding.

Here are just some of the ways the NBSS Fund provides stability and support across the School.

SCHOOLWIDE

- ▶ Class materials
- ▶ Student Learning Specialist
- ▶ Professional Development for all employees (\$500 each per year)
- ▶ Student Food & Essentials Pantry
- ▶ Student Business Courses
- ▶ Guest instructors
- ▶ Public programs and lectures
- ▶ Licensing fees for software and databases

PROGRAM-SPECIFIC

- ▶ Bennet Town in CA
- ▶ Access control training in LK
- ▶ Travel abroad for VM students
- ▶ iPads & handtools in PT
- ▶ Nantucket field project in PC
- ▶ Laptops & bench lamps in JM
- ▶ Conference fees for PA students

“This program gave me the knowledge I needed to make a living in an industry that makes me happy.” – FRANK MARR CA '24



An Inviting Conversation



NBSS is awarded an inaugural IDEAL Internship Grant from the Decorative Arts Trust

WHEN SARAH TURNER, North Bennet Street School's President, first received the call for applications to the IDEAL Internship Grant, the School was already thinking about ways to formally include more voices in our work. She remembers, "Our community was in the thick of a campus-wide conversation about improving diversity, equity, and inclusion. One of our strategic goals was to create more offerings for the general public, to introduce craft to broader audiences."

Awarded by the Decorative Arts Trust, a non-profit dedicated to fostering appreciation and study of the decorative arts, the grant set out to create curatorial opportunities, improve access, and foster mentorship for students of color in the museum field. Each grant offered a generously paid, months-long internship, enabling an aspiring curator to study and experience every aspect of exhibition design, installation, and curation.

Matthew Thurlow, Executive Director at the Decorative Arts Trust, explained, "Access to the museum field for students of color has been hindered by innumerable factors, but the two elements that we addressed through the IDEAL Internship program are those of the visibility of the arts as a viable academic and professional path and the financial backing to ensure that underrepresented students have the necessary support to pursue these opportunities."

The IDEAL Grant's timeline lined up perfectly with the *In the Making Exhibition*, a group show already planned to open in September 2023 under the same name as the School's popular four-season *In the Making* livestreamed series. The exhibition would bring to NBSS various works by the show's guests—some of the same items previously only seen by viewers online. Sarah said, "I loved the idea of a call-and-response between the show and the exhibition, which was a natural extension of *In the Making*."





When the show opened in the NBSS front lobby in September 2024, a collage incorporating the voices of *In the Making* participants in the gallery's center became a reality thanks to Ja'Hari's vision. Viewers could read wall texts and then use their phones to scan QR codes linking to extended interviews.

After applying for the Grant, NBSS received exciting news that the School had been selected as a recipient. **Kristen Odle**, the host of *In the Making* and the School's Retail & Exhibit Manager, led a search for the intern candidates and later co-curated the exhibition. Considering submissions from candidates across Boston, **Ja'Hari Ortega**—a current student in the NBSS Jewelry Making & Repair (JM) program—was the clear choice for the assignment.

Kristen shared, "When I read over Ja'Hari's statement, I was struck by how she referred to a curatorial approach for this exhibition that would bridge the blurry gap between art and craft. She totally won me over."

Ja'Hari came to NBSS in the spring of 2022 after graduating from MassArt's Interrelated Media program. A maker at heart, she viewed

the JM program as a deep dive into jewelry fabrication, which would extend and support her pre-existing sculpture practice. Throughout her artistic career, Ja'Hari has consistently pursued her craft parallel to a curatorial practice. At MassArt, she worked with a community arts initiative, curating shows in local cafes and galleries. She also worked as a curatorial intern at the MassArt Art Museum and the exhibitions department at the Museum of Fine Arts, Boston (MFA).

The internship began in the summer of 2023 with a listening tour for networking and gathering ideas for the exhibition. Kristen and Ja'Hari visited local workshops, museums, and studios, including meeting with the mounts department at the MFA, taking an art collection tour at The Quin House (a private Boston club), and a studio visit to the Artisans Asylum maker space.

Towards the end of the summer, makers' work began arriving at NBSS. Unpacking the wooden crates and beginning to imagine the exhibition installation and design was when Ja'Hari got to make her mark. "It was fun sketching the floorplan and re-connecting with the MFA mounting department for advice. I even got to build my own mounts for a few of the pieces," she said.

Ja'Hari said, "Kristen was great to work with—she was willing to help me turn my installation vision into something attainable. She also respected the contributions, perspective, and feedback that I provided in terms of representation, diversity, and education."

Ja'Hari said that curating a show that incorporated so many diverse voices was a great launching point. "It was a great start,

and I hope to see more access to information and opportunities that will help transform the future of these industries and educational spaces."

Speaking from the Decorative Arts Trust perspective, Matthew said, "We have a great admiration for North Bennet's role in preserving the craft traditions of decorative arts. This internship offered a unique and meaningful chance to bridge the role of maker and curator through Ja'Hari's contributions to the exhibition."

"Our School's partnership with the Decorative Arts Trust has been invaluable," Sarah shares. "It was such a natural fit of shared work to expand our diversity, equity, and inclusion efforts, while providing students with transformative opportunities. Thank you to everyone involved in making this program a success—our students, staff, partners, and supporters alike."



"In the Making is about sharing stories, giving representation, and offering a platform to under-represented and marginalized crafts and tradespeople. Ja'Hari helped make that possible." — KRISTEN ODLE

Maintaining Excellence



How the Cabinet & Furniture Making Program Revamped Its Machine Room for the Next Generation



EARLY IN 2023, a conversation among faculty members at NBSS sparked an idea that would soon transform the Cabinet & Furniture Making (CF) program. The subject at hand was the aging equipment in the machine room, which, despite decades of service, was beginning to falter under the heavy use of 40+ students across decades. As the machines required regular adjustments and repairs, instructors found themselves spending more and more time as mechanics than educators. This realization led to a consensus: it was time for a major upgrade.

Jamey Pope CF '06, the CF Department Head, recalls how the initial idea came to life. **"Matt Wajda CF '00** and I were going over the equipment and in an exasperated moment one of us said something about just starting over from scratch. But as we left later that day, each of us thought, 'Why are we just

daydreaming? Let's find out how much this would cost.'" This moment of curiosity quickly evolved into a thoughtful plan to overhaul the machine room with new equipment from the Northfield company, a Minnesota-based manufacturer known for its durable and reliable machinery.

The need for new equipment was clear, but the funding required was not something the school could easily absorb. The estimated cost for the project was more than \$200,000, a significant sum that necessitated outside support.

Fortunately, the donor community rallied behind the cause. Over the next two years, Jamey and the NBSS Development team worked tirelessly to raise the necessary funds. The effort was a success, bringing in over \$210,000 from a small but enthusiastic group of donors, including graduates, some board members, and corporate supporters.

The need for new equipment was clear, but the funding required was not something the school could easily absorb. Fortunately, the donor community rallied behind the cause.

24

donors participated

\$210k

raised

6

new machines

The success of the fundraising campaign allowed the School to move forward with the purchase of six new machines. But the project didn't stop there. In addition to the new machines, the machine room underwent a complete reorganization, including updated electrical and ductwork. This overhaul not only improved the functionality of the space but also significantly enhanced the health and safety conditions for both students and faculty. The work was completed in just two months by CF Instructor (and jack-of-all-trades) **Nick Maraldo CF '07**, overseen and coordinated by Marc Dreyfus, Director of Facilities & Technology.

The impact of the upgrade is far-reaching. For students in the CF program, the new machines offer a more reliable and efficient learning environment. For instructors like Matt, the new equipment means more time to focus on teaching rather than maintenance.

"Watching Matt try to keep all the machines tuned throughout the year was a huge challenge," Jamey recalls. "Now, with the quality of this new equipment, there's less time spent on maintenance and more time working with students."

The benefits extend beyond the full-time students in CF. The Community Education department, which offers its signature Three-Month Furniture Making Intensive in the CF program space each summer, also stands to gain from the upgraded facilities.

"Having CE students come in and work with this extremely high-quality equipment sets the status of our department," Jamey explains. "The new machines not only elevate the learning experience but are also a great recruitment tool for future students."

"With the quality of this new equipment, there's less time spent on maintenance and more time working with students."

— JAMEY POPE CF '06, DEPARTMENT HEAD

The completion of this project marks a new chapter for the CF program at NBSS. With top-quality equipment, an optimized learning environment, and a commitment to excellence, the program is poised to continue its tradition of producing highly skilled and knowledgeable graduates, ready to make their mark in the world.

As Provost **Claire Fruitman CF '96** summarizes, "We have a fabulous faculty, we have a great curriculum. We moved into this facility, which is fantastic, and now we have an amazing machine room to go with all of that. Even though I didn't think it could get much better, this moves the program to a whole new level."



Staff & Faculty

STAFF

Sarah Turner, President

Chloe Benisvy, Community Education Coordinator
through July 2024

Catherine Canney, Senior Director of People
& Operations *from Sept 2024*

Brittany Carlson, Director of Community Education

James Dergay, Director of Financial Aid

Kevin Derrick, Director of Marketing & Engagement

Jamila Derring, Community Education Coordinator
from July 2024

Nicki Downer, Development Coordinator

Marc Dreyfus, Director of Facilities & Technology

Claire Fruitman CF '96, Provost

Annie Hayes, Director of Institutional Support

Corie Melaugh PT '21, PA '22,
Admissions Coordinator *from Feb 2024*

Marcia Michelson, Assistant to the President

Bob Miller CF '11, Community Education Technician

Nathan Mohney PT '22, PA '23,
Academic Administrator *from Dec 2023*

Tafadzwa Musekiwa, Director of Student Support
& Career Services *through Nov 2023*

Rob O'Dwyer, Director of Admissions & Enrollment

Kristen Odle-Devine, Retail & Exhibit Manager

Marlow Penree, Front Desk Receptionist *from Aug 2023*

Colleen Walsh Powell, Director of Development

Barbara Rutkowski, Associate Director of
Marketing & Communications

Ronald Santos, Building Maintenance

Ada Schenck VM '22,
Facilities Coordinator *through Aug 2023*

Sharon Scully Stetson, Associate Director
of Admissions

*Lists reflect Board, Program Advisory Committees, Faculty,
and Staff for FY24 only (8/1/23-7/31/24)*

TA = Teaching Assistant

FACULTY

Bookbinding

Jeffrey Altepeter BB '99 (Dept. Head)

Martha Kearsley BB '95

Ariana Rutledge BB '22 (TA)

Carpentry

Peter Smith PC '04 (Dept. Head)

Brock Leiendecker PC '16

Laurie Vance CA '23 (TA)

Cabinet & Furniture Making

Jamey Pope CF '06 (Dept. Head) *from Sept 2024*

Ellen Kaspersn CF '03 *from Sept 2024*

Nicholas Maraldo CF '07 *from Sept 2024*

Lance Patterson CF '79

Matthew Wajda CF '00

Aedan Fitzgerald CF '23 (TA)

Lily Tilton CF '23 (TA)

Jewelry Making & Repair

Tracey Jenkins Darji JM '05 (Dept. Head) *from Sept 2024*

Haley Filamond JM '20 *from Sept 2024*

Evan Cyr JM '20 (TA)

Locksmithing & Security Technology

Eddy Michel Dacius LK '13 (Dept. Head)

Christian Locke LK '22 (TA)

Piano Technology (Basic and Advanced)

Debra Cyr PA '93 (Co-Dept. Head)

Emily Townsend PT '07, PA '08 (Co-Dept. Head)

Hillary York PT '12, PA '13

Will Roper PT '19

Jennifer Gold PT '23 (TA) *from Jan 2024*

Corie Melaugh PT '21, PA '22 (TA) *through Dec 2023*

Thomas Porter PT '20, PA '21 (TA) *through Mar 2024*

Preservation Carpentry

Steven O'Shaughnessy PC '99 (Dept. Head)

Michael Burrey

Thomas Eldridge PC '21 (TA)

Sophie Linnell PC '21 (TA)

Violin Making & Repair

Roman Barnas (Dept. Head)

Community Education

Eli Cleveland CF '09, Three-Month Furniture

Making Intensive Instructor

Activities & Administration

Board of Directors

Genie Thorndike CF '16, Chair
Dr. Lindsa McIntyre, Co-Vice Chair
Tom Piemonte, Co-Vice Chair *from Mar 2024*
Matthew P. Day, Treasurer
Mark J. Hauser, Clerk
Sarah Turner, President

DIRECTORS

David Ambler CF'11 *through Dec 2023*
Brad Bedingfield *through Dec 2023*
Bruce Dayton
Daniel Day Lewis *from Mar 2024*
William R. Hettinger
Brent Hull PC '93 *through Dec 2023*
Will Iselin
Rob Leahy *from Dec 2023*
Cynthia Malm *through Dec 2023*
Marc Margulies *from Mar 2024*
James Mason
Kevin McCaskill
Patrick Muecke CF '97
Deb Pasculano
Thomas C. Piemonte *from Dec 2023*
Paul Reidt
Norma Rey-Alicea
Colin Urbina BB '11 *through Dec 2023*
Keith Ward PT '12, PA '13 *through Dec 2023*
Vaughn Waters
Juliana Wong

Board of Advisors

Melba Abreu
Corey Allen
David Ambler CF '11 *from Jan 2024*
Brad Bedingfield *from Jan 2024*
McKey Berkman BB '11
Brian Broderick *through Dec 2023*
Colin Cabot *through Dec 2023*
Rebecca Greenleaf Clapp
Lauren Cook
Edward S. Cooke
Cheryl Delgreco
Kate Durrane
Simon Eccles *through Dec 2023*
Janet English
Giselle Futrell
John F. Gifford JM '97, CF '01
Andrew Haines

Kamala Harrington CF '15
Nancy Hoffman *through Dec 2023*
Brent Hull PC '93 *from Jan 2024*
Peder C. Johnson
Charles L. Kline CF '05
Marc Margulies *through Mar 2024*
Walter McDonald, Associate
Director, Emeritus *through Dec 2023*
Nick Offerman
Thomas Piemonte *through Dec 2023*
Katherine Ruffin *through Dec 2023*
Heidi Schwegler
Colin Urbina BB '11 *from Jan 2024*
Frano Violich
Keith Ward PT '12, PA '13 *from Jan 2024*
Thomas Williams, Jr.,
Executive Director, Emeritus

“The fact that NBSS is keeping alive an important part of human culture is something that everyone can appreciate.”

— MARC MARGULIES



Program Advisory Committees

Bookbinding

Mary Patrick Bogan
Bexx Caswell BB '09
Samuel Ellenport
Babette Gehrlich
Paul Parisi
Graham Patten
Todd Pattison
James Reid-Cunningham BB '90
Deborah Wender

Carpentry

Wade Bergeron
Katherine Massaro Durrane
Kurt Fieldhouse CA '93
Stephen Gould PC '01
Edward Howland
Arthur Massaro
Barry A. Mann PC '97
Patrick O'Shaughnessy CA '06
Anthony Samale

Cabinet & Furniture Making

Eli Cleveland CF '09
Janet Collins CF '97 *through Apr 2024*
William Doub CF '74
Sean Fisher CF '94
Brian Kelly CF '95
John McCormack CF '88
Gregory Porfido CF '89

Jewelry Making & Repair

Craig Adamson *from Apr 2023*
Michael Binnion *from Mar 2023*
Ilah Cibis JM '05
Linus Drogs
William Firestone
Alan Leavitt
Colleen Matthews JM '12
Christopher Ploof *through Jan 2024*
George Simpson



Locksmithing & Security Technology

Daniel Heyligers
Stephen McKinney
Virginia M. Newbury
Jonathan Nir LK '17, CA '18
Michael Samra LK '87
Jeffrey G. Schwartz
Dave Troiano
Rick Weisse

Preservation Carpentry

Robert A. Adam
William Lewis Barlow, IV
Sara B. Chase
Matt Diana PC '10
William Finch
Anne Grady
Brian Pfeiffer
Denis Sempregon

Piano Technology

George Crawford
Lawrence Fine PT '76
Anne Garee
Michael Jurewicz
Xiaodan Liu PT '07, PA '08
Sean Mallari PT '05, PA '06 *through Nov 2023*
Jude Reveley
Lewis J. Surdam PT '79, PA '80

Violin Making & Repair

Kevin Kelly VM '92
David Polstein VM '89
Christopher Reuning
Benjamin Ruth
Andrew Ryan

Career Training Program Activities

The items listed represent just a fraction of the many projects, lectures, guests, and field work from across all of our Career Training programs in the last fiscal year (August 2023 through July 2024). For a current, broader selection of activities, please check out our website nbss.edu and social media channels [@nbssboston](https://www.instagram.com/nbssboston).



- BB Bookbinding
- CF Cabinet & Furniture Making
- CA Carpentry
- JM Jewelry Making & Repair
- LK Locksmithing & Security Technology
- PC Preservation Carpentry
- PT Basic Piano Technology
- PA Advanced Piano Technology
- VM Violin Making & Repair
- CE Community Education: Three-Month Furniture Making Intensive:

FIELD TRIPS

- BB New England Document Conservation Center, Andover, MA
- Pergamena Tannery, Hudson Valley, NY
- CA Guerney's Lumber, Brockton, MA
- JLC Live Convention, Providence, RI
- CF Old State House, Boston, MA
- Mark Richey Woodworking, Newburyport, MA
- JM Museum of Fine Arts and the MFA Conservation Lab, Boston, MA
- Jewelers Building, Boston, MA
- LK State Street (formerly Beth Israel), Boston, MA
- Assa Abloy, New Haven, CT
- PT/PA Steinway and Sons, New York, NY
- Symphony Hall, Boston, MA
- PC 1780s Yin Yu Tang House at the Peabody Essex Museum, Salem, MA
- 1796 Lyman Estate, Waltham, MA
- VM Reuning & Son Violins, Brookline, MA
- Skinner Auction House, Marlborough, MA
- CE Museum of Fine Arts, Boston, MA



For a full listing of this year's field trips, check out our 2024 edition of **Benchmarks Magazine**.

GUEST LECTURERS

- BB **Jim Reid-Cunningham BB '90:** Leather Rebacking
Todd Pattison: Vellum Manner & Adhered Boards
Jeff Peachey: Knife Sharpening
Chena River Marblers (Regina & Dan St. John): Paper Marbling
Christopher Sokolowski: Prepared Tissue for Paper Mending
Chela Metzger BB '93: Entering Conservation
Lori Foley BB '95: Disaster Planning & Recovery
- CA **Eric Zankowski CA '13:** Cabinet Making
- CF **Andy Glenn CF '08:** Ladderback Chairs
Elizabeth Grab BB '24: Leatherwork in Furniture
Peter Follansbee: Green Woodworking
Brad Wolcott CF '12: Finishing
Paula Garbarino CA '80, CF '88: Marquetry
Kolin Schmidt CF '21: Computer Aided Design
John McCormack CF '88: Sawhorses
- LK **M.A.S. Associates LLC:** ILCO Automotive & Cabinet Locks
H To O Supply LLC: PACLOCK Product Overview
Allegion: Safety & Code
Brock Leindecker PC '16: Chisel Sharpening and Techniques
Kelleher Associates: Assa Abloy Overview
Assa Abloy Academy: Basic and Advanced Electric
Dabbs Lock, Inc: Running a Lock Business
- JM **Ilah Cibis JM '05:** Computer Aided Design
Alan Leavitt: Mold Cutting and Casting
Lindsay Minihan: New Tools Showcase
- PT/PA **Dan Levitan PT '75:** Pitch Corrections, Business Policies, Tuning Stability, Tuning Theory;
Gregory Cheng: Repairing Finishes, Modern Player Pianos;
Sally Phillips PT '76: Tuning
Steinway: Spirio Player Mechanism
Jason Cassel: Voicing
Brooks Limited: Taxes for the Self-Employed
- PC **Rich Friberg PC '04:** Lathe Turning, Sash Making
Janet Kane: Structural Engineering
Omri Nassau PC '17: Masonry
Jane Griswold: Geometry in Construction
Sara & Lee Noel Chase PC '94: Historic Paint & Finishes
Fabio Bardini: Restoration Masonry
Penn Austin: Flat & Ornamental Plastering
Daniel Miles: Dendrochronology
- VM **Nicholas Makris, MIT:** Acoustics
Christopher Reuning, Reuning & Son Violins: Lecture
Harrelson Stanley: Sharpening Stones
Benjamin Ruth: Varnishing
Kevin Kelly VM '92: Drafting the Scroll
Christian Shaboon, Reuning & Son Violins: Restoration
Inkyu Hwan, Carriage House: Restoration
Andrew Ryan: Tone Wood Selection

CLIENT WORK & SPECIAL PROJECTS

- CA Private Residence, Hanover, MA
- JM Select Items from Jewelry Collection at the Museum of Fine Arts, Boston, MA
- PC Memorial Hall, Charlestown, MA;
1795 Cape-style Private Residence, Duxbury, MA;
1740s Private Residence, Sandwich, MA

CONFERENCES AND COMPETITIONS

- BB Guild of Bookworkers Conference
- CA Prism Awards Gala; JLC Live; MassDEP; Deconstruction Work Group Seminar
- CF Providence Fine Furnishings
- LK Yankee Security Convention;
NBSS LK Panel Discussion
- PC NH Preservation Alliance Old House and Barn Expo
- PT/PA Virtual Conference

Community Education

CLASSES & PROGRAMS

19th Century Field Book
 3-Slat Ladderback Chairmaking
 A Taste of Spindle Turning
 Advanced Bowl Turning
 Advanced Paper Marbling
 Beginner Marbling with Acrylics
 Bent Band Oval Boxes
 Bezel Ring Fabrication
 Book Structures for Prints
 and Photographs
 Bookbinding 101
 Build a Mountain Banjo
 Chairmaking: Modern Woven Chair
 Cherry Wall Cupboard
 Chip Carving
 Construction Scheduling
 Creating Architectural Staircases
 Danish Cord Footstool
 Danish Modern Plant Stand
 Decorative Inlay & Marquetry
 Decorative Paste Paper
 Enclosures for Preservation
 and Beyond II
 Endbands: Stuck On and Sewn
 Exploration of Earrings
 Finishing 101
 Flat Edge Tool Sharpening
 Flush Setting
 Folded Books
 Fortepiano Maintenance,
 Regulation, & Repair
 Fundamental Techniques
 in Bowl Turning
 Fundamental Techniques
 in Spindle Turning
 Fundamentals of Bookbinding I
 Fundamentals of Bookbinding II
 Fundamentals of Fine Woodworking
 Fundamentals of Finishing:
 Blind & Gold Tooling on Leather

Fundamentals of Jewelry Making I:
 Essential Skills
 Fundamentals of Jewelry Making II:
 Soldering Intensive
 Fundamentals of Jewelry Making III:
 Stone Setting Exploration
 Fundamentals of Machine
 Woodworking
 Gold Tooling with Egg Glaire
 Harpsichord Voicing & Regulation
 Historic Sewing Structures
 Historic Timber Framing
 Introduction to Book Conservation
 Introduction to Cabinets
 Introduction to Chairmaking:
 Making a Milking Stool
 Introduction to Copper Enameling
 Introduction to Decks & Stairs
 Introduction to Dovetails
 Introduction to Drywall
 Introduction to Exterior Trim
 Introduction to Forging
 Introduction to Interior Trim
 Introduction to Leather Bookbinding
 Introduction to Paper Conservation
 Introduction to Piano Technology
 Introduction to Platform Framing
 Introduction to Roof Framing
 Introduction to SketchUp
 Introduction to the Router
 Introduction to Veneer
 Introduction to Windows & Doors
 Italian Paper Bindings
 Jewelry Making 101
 Knitted Boards Binding
 Layout for SketchUp
 Making Space: Introduction to
 Woodworking for Conservators
 Medieval Long & Link Stitched
 Bindings

Metal Clasps for Books
 Miniature Marbling
 Picture Frames
 Relief Printmaking for
 Patterned Bookcloth
 Shaker Oval Boxes
 Shaker Tape Weaving
 Simple Japanese &
 Chinese Bookbindings
 Soldering Basics
 Spoon Carving: Dry Wood
 Spoon Carving: Green Wood
 Stereotomy: Building the
 “Moore” End Table
 Stringing & Banding
 Three-Month Furniture
 Making Intensive
 Traditional Ethiopian Bookbinding
 Turn a Bark Rim Bowl Made with
 Wet Wood
 Turn a Bud Vase with a Glass Sleeve
 Turning Basics: Rolling Pin
 Twice-Turned Bowl Made from
 Wet Wood
 Veteran & Family Woodworking:
 Build a Birdhouse
 Veteran Woodworking:
 Spoon Carving
 Veteran Woodworking:
 Woodworking 101
 Wax Carving & Casting Clean Up
 Window Sash Restoration
 Windsor Side Chair: Design & Build
 Woodworking 101
 Woven Backpacks



Exhibitions, Events & Public Programs

PUBLIC PROGRAMS (IN THE MAKING)

Conversations:
 2024 Exhibition
 Boston’s North End
 From Student to Instructor
 Locksmithing & Facilities
 People’s Inclusive Welding
 Robotics & Toolmaking
 Slöyd Experience
 Stephen Hamilton
 Thinking with Things

Lectures:
 BA Harrington CF ’93
 Backwoods Chairmakers
 by Andy Glenn CF ’08
 Emmet Van Driesche
 Notre-Dame Project
 with Handhouse Studio



EXHIBITIONS

In the Making Exhibition
 Sep 7 – Dec 12, 2023

2024 Exhibition: *Then & Now*
 May 3 – Aug 10, 2024

NBSS COMMUNITY EVENTS

Commencement Ceremony
 Exhibition Opening Party
 Community Partners Breakfast
 Founder’s Day
 Friends and Family Meet & Greet
 Locksmithing Panel & Tour
 North End Neighborhood Breakfast
 Open House & Winter Market
 Piano Technology Virtual Conference
 Student & Alumni Holiday Party

Financial Overview

Letter from the Treasurer

OVER THE LAST FISCAL YEAR, we have achieved significant milestones for the School, and I am pleased to share the financial overview of our institution.

The School's strong financial foundation allowed Fiscal Year 2024 to focus on two key priorities of its strategic plan: deepening support for faculty and students, and strengthening the School's resources and operational capacity.

In support of faculty and students, NBSS leadership invested in its employees through a compensation review to ensure market competitiveness, and promoted greater equity and transparency. The expansion of the Teaching Assistant program, with at least one TA per course, further enhanced faculty resources and supported student learning. Additionally, we expanded educational technology, improving accessibility for both students and faculty.

Regarding resources and operational strength, our Community Education (CE) program saw notable success, with significant increases in student registrations, classes offered, and overall revenue. This marks the third consecutive year of financial growth for CE and underscores its role in raising the School's profile as a leader in craft and trade education. Projections for enrollment in CE courses and Career Training Programs (CTP) suggest these trends will continue.

In the following pages, we provide detailed insights into the financial performance of the last fiscal year, including the strong CE revenue and an increase in CTP tuition revenue.

Although contributions, gifts, and grants were lower than anticipated, this was offset by a remarkable increase in capital gifts, inclusive of an Endowment Challenge that will be reflected in future reports. Notably, we received the single largest gift in the School's history—\$2.5 million from an anonymous foundation. This transformative support will have a lasting impact on NBSS for many years to come.

On behalf of the Board, we are immensely grateful for your continued support and dedication to NBSS. Together, we will keep changing lives through this unique and impactful institution.

As I complete my term on the Board at the end of 2024, I want to share a personal note of gratitude. I am proud to have served as a Board member and Treasurer of this remarkable institution for the last six years. The faculty, students, and staff seize each day as an opportunity for meaningful work, and the impact of their efforts is far-reaching. What wasn't entirely clear to me until I became Treasurer was the critical role the broader School community plays. Your generosity of time and resources allows the School to thrive, evolve, and achieve its mission in ways that truly make a difference.

I look forward to seeing how NBSS continues to grow and flourish, knowing that it will be in capable hands with your ongoing support.



Matthew P. Day
Treasurer

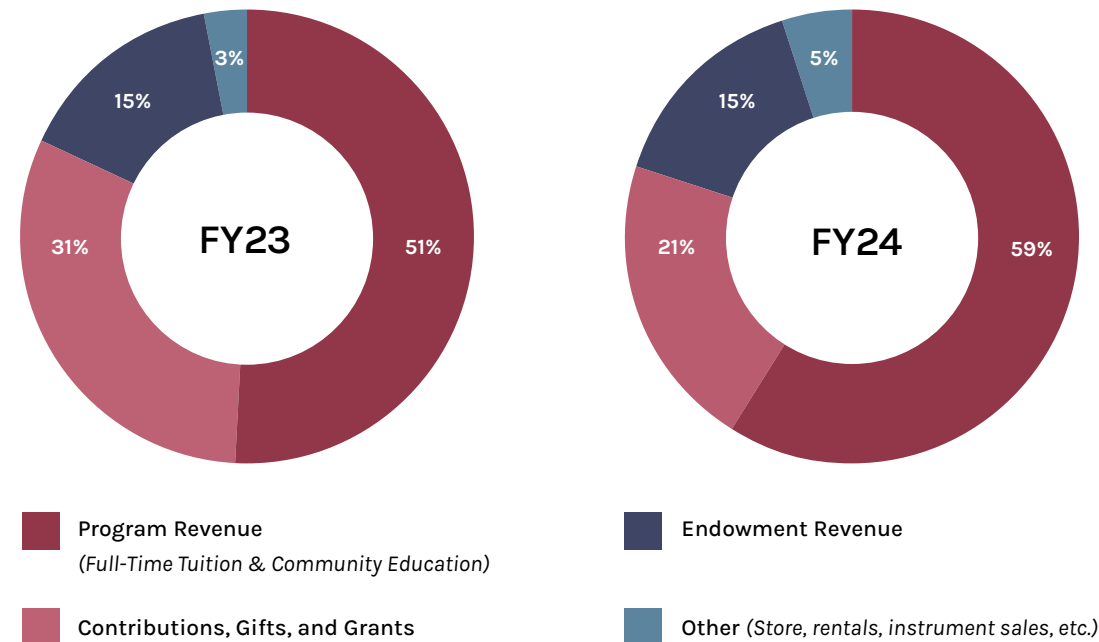
Financials

STATEMENT OF ACTIVITIES

Revenues

	7/31/2023	7/31/2024*	% CHANGE	% OF OPERATING REVENUE
Tuition and fees, net	2,562,751	3,050,981	19.1%	47%
Contributions, gifts, and grants	1,924,154	1,364,399	-29.1%	21%
Community education	547,705	747,463	36.5%	12%
Project and instrument revenue	113,122	129,464	14.4%	2%
Investment income used in operations	894,000	955,000	6.8%	15%
Other revenue	19,531	80,733	313.4%	<1%
Rental revenue	6,000	11,750	95.8%	<1%
Store sales, net of cost of sales	61,556	110,599	79.7%	2%
Total Operating Revenues	6,128,820	6,450,389	5.2%	100%
Non-operating gifts	609,000	2,555,072	319.6%	
Total Revenues	6,737,820	9,005,461	33.7%	

Operating Revenue by Source



Expenses

	7/31/2023	7/31/2024*	% CHANGE	% OF EXPENSES
Program	3,012,934	3,426,152	14%	41%
General and administrative	4,095,615	4,567,246	12%	54%
Fundraising and development	394,515	427,931	8%	5%
Total Expenses	7,503,064	8,421,328	12%	100%
Change in Net Assets from Operations	-765,245	584,133		

Non-Operating Activity


	7/31/2023	7/31/2024*	% CHANGE
Investment income used in operations	-894,000	-955,000	6.8%
Interest and dividend income	746,196	763,413	2.3%
Endowment gifts	21,350	80,328	276.2%
Gain (loss) on investments, net fees	998,126	2,778,934	178.4%
Total Non-Operating	871,672	2,667,674	206.0%

Net Assets

	7/31/2023	7/31/2024*
Change in net assets	106,427	3,251,807
Net assets at beginning of fiscal year	54,100,523	54,206,952
Net assets at end of year	54,206,952	57,458,759

* Results are unaudited as of the publish date of this report.





North Bennet Street School extends our deep gratitude to all community members who generously supported the School during our 2024 fiscal year.

The following donors are recognized for gifts and pledges made to NBSS between August 1, 2023 and July 31, 2024.



Our Donors



The Shaw Society

Named after North Bennet Street School's founder, Pauline Agassiz Shaw, the Society recognizes leadership donors who ensure the School's ongoing excellence with NBSS Fund contributions of \$1,000 or more.

Visionary

\$100,000+

Bruce & Lynn Dayton
Judy BB '97 & Carl Ferenbach

Mentor

\$50,000-\$99,999

Charina Endowment Fund
William CF '07 & Corinna Hettinger

Expert

\$25,000-\$49,999

Barbara & Amos Hostetter
Laurence C. Lombard
Deborah & Mark Pasculano
Genie CF '16 & Will Thorndike
Michael and Louisa von Clemm Foundation, Inc.

Artisan

\$10,000-\$24,999

Peter S. CA '83 & Kathy Feinmann
Rebekah Lord Gardiner BB '93 & J. Matthew Gardiner
Eric Hilfers
Edward C. Johnson, IV
Lynch & Lynch, Attorneys
The Morgan Palmer Foundation
Caroline Mortimer
Neil & Anna Rasmussen
Seth Sprague Educational and Charitable Foundation
Anonymous (2)

Craftsperson

\$5,000-\$9,999

David CF '11 & Holly Ambler
McKey BB '11 & James Berkman
Nancy Dempze & Dan Bailey
John M. Driggers CF '87
E & L Campbell Family Foundation
Eastman Charitable Foundation
Simon Eccles & Carolyn Hitt
Janet & Chris English
Jock Gifford JM '97, CF '01 & Brigid Sullivan
Howard Gorin
Bayard Henry
Charles CF '05 & Charlotte Kline
Elizabeth & Philip Loughlin, in honor of Deb Pasculano
Marc & Anne Margulies
Robert & Joan Murray, in honor of Thomas and Catherine Piemonte
Nick Offerman
Thomas & Catherine Piemonte
Anonymous (3)

Apprentice

\$2,500-\$4,999

Paula J. Garbarino CA '80 CF '88
James Stewart Greto
Vin CF '13 & Becky Kennedy
Geraldine Kerrigan
Tish & Steve Mead
Starr Moore
Richard Greener & Carrie Pascoe, in memory of George C. Greener
Lia G. & William J. Poorvu
Paul Reidt & Kim Manasevit
Philip C. & Anne Stevens
Harriet S. Turner
Robert Cushman Woods Van Nostrand Memorial Fund
Suzanne Walsh
Anonymous (2)

Advocate

\$1,000-\$2,499

Norm Abram & Elise Hauenstein
Dorothy C. Africa BB '93
Applied Materials Foundation
Jacob D. Albert
Amelia Sillman Rockwell & Carlos Perry Rockwell Charities Fund, Bank of America, N.A., Trustee
The Blackbaud Giving Fund
Mary Patrick Bogan
Brian C. Broderick
Fenton J. Burke CF '95
J. Otis Carroll, Jr. PC '97
Carol & Bruce Caswell, in honor of Bexx Caswell BB '09
Richard & Dan Cheek CF '10, in memory of Betsy Cheek
William G. Creelman
Bill Davison & Carol Rissman
Matthew Day & Catherine Stabile
Nicholas & Elizabeth Deane
Tia Dennis CF '03 & Charles Morris
Jim & Ellen Dunn
Edmund and Betsy Cabot Charitable Foundation
Michele Elliott, in honor of Colleen Walsh Powell
Lawrence Fine PT '76
David & Karen Firestone
Claire Fruitman CF '96, Brian, & Griffin Bram
Donald & Kaia Fye
Anne Garee
Connie & Fred Glore
Susan Cable & Benjamin Gomez
Miguel Gómez-Ibáñez CF '99, President Emeritus
Jason Gregoricus & Seton Lindsay
Deborah Hall
Donald E. & Ann F. Hare
Burton CF '97 & Shirley Harris
Andrea & Mark J. Hauser
John Heveran CF '25
Gaye Hill & Jeffrey Urbina

Lyle Hiorns, PA '01
Rex & Gay Holsapple
Edward & Marianna Howland
Kathleen Hull
Brent Hull PC '93
Charlotte von Clemm Iselin & William Iselin
Chip & Gay Jarvis
Alison & Peder Johnson
Steven Kirincich & Susan Mahan
Knapp Family Foundation
Rob Leahy
Marvin Lummis PC '00
Michael & Cynthia Malm
James Mason
Walter McDonald, Associate Director Emeritus
Nicolas Minutillo
Jane & Robert Morse
Patrick CF '97 & Danielle Muecke
Betty Munson
Jean Ann & Alan Nierenberg
Timothy CA '23 & Tess O'Brien

William CF '23 & Joy O'Connor
Selma Ordewer
Justin Pasculano CA '17
Jennifer Pellecchia BB '19
Colleen Walsh Powell, in honor of Nicki Downer
Cornelia C. Roberts
John Robinson, in memory of June N. Robinson
Rosse Family Charitable Foundation
Evan Schumer CF '24
Laura & William Shucart
Andy Silverman CF '14 & Molly Paul
Carl Spector & Marilu Swett
Peter H. Talbot
Joan Thorndike
Sarah Turner & Suzanne Pugh
Vaughn Waters
Mary & Tim Williams, Executive Director Emeritus
Valeria Dean Wolff
Juliana Wong & Peter Kurunczi
Anonymous (4)



The NBSS Fund provides unrestricted support for the School's annual operating needs. These funds ensure the financial strength and flexibility for NBSS to fulfill its mission day in and day out, supporting everything from financial aid to tools and field work for students and faculty.

\$500-\$999

- Kate CF '00 & Diane Benison
- Jackie Blombach PC '02 & Michael Duca
- Phyllis Bloom, in memory of Dr. David Bloom
- The Hon. Levin H. Campbell
- Martha B. Childs
- Clemency Coggins
- Robert Field & Susan Geller
- Gary W. Green CF '97
- James M. Hamlen
- Karen S. Hohler
- James & Susan Hunnewell
- Bill & Lauren Huyett
- Kevin Kelly VM '92 & Patricia Belden Kennedy & Violich Architecture
- Ernest & Robin Krieger
- Timothy & Susan Larkin
- Harold & Beth Lewis
- The Lindsay Foundation
- James M. Marsh
- Kevin McCaskill
- Peter McGhee CF '04
- Christopher McLain
- Pamela & Don Michaelis
- David Michaelson
- Jane Callahan Moore CA '88
- Lynn Petrasch
- Chris Rifkin
- Charles Sawyer
- Thomas C. Schwartzburg
- David & Marie Louise Scudder
- Lisbeth L. Tarlow & Stephen B. Kay
- Colin Urbina BB '11
- Tom & Alice Walsh
- Rick Weisse
- David H. Wellington CF '99
- Anonymous



\$250-\$499

- | | |
|---|---|
| Joseph & Paula Axelrod | Gregg Kulichik |
| Katherine Boden, in memory of Nicholas Rege-Colt CF '93 | Daniel Levitan PT '75 |
| Levin H. Campbell, Jr. | Dave B. Manley |
| Ira Carp | Loy Martin |
| Gregory Cheng | Consuela G. Metzger BB '93 |
| Margaret Cole, in memory of Wilfred J. Taylor | Susan J. Montgomery |
| Anne Marie Conway & Art LaMan CF '21 | Jim & Dorothy Rogers |
| Jerry CF '84 & Amy de Rham | Catherine & Phil Saines |
| Thomas PC '88 & Rhoda Decatur | Nancy & Richard Schrock |
| J. T. Delaney Construction LLC | Will Sullivan |
| Eric Donnelly PT '08, PA '11 | J. Arthur CF '00 & Jeannette Taylor |
| John Ellenberger & Patti Thompson | Tatiana Wilcke CF '89 & Gregory Porfido CF '89 |
| David Franz CF '99 | Jane & James Wilson |
| Elissa Freud and Steve Willis | Stephanie Wolff & Steven Mann |
| Richard D. Huhn CF '13 | Valerie A. Wyckoff BB '89, in memory of Marilyn L. Heskett BB '88 |
| Paul Klitzke PT '85, PA '86 | Anonymous (4) |
| Barbara Krakow | |

The NBSS Fund

\$100-\$249

Raquel Alonso-Perez
 Daniel C. Bacon
 Susi Barbarossa BB '96
 Andrew Barlow
 Lisa Unger Baskin
 Lisa Bielefeld
 Francis Blake
 Bonfire Funds, Inc
 Jay Borden
 Anthony Bravo, Jr.
 Robert & Juliana Brazile
 Sue Brown PT '96, PA '97
 Richard & Marietta Burns
 Sara B. Chase
 H. Nichols B. Clark
 Jay Cogswell
 Lauren Cook
 Edward S. Cooke, Jr. & Carol Warner
 Sarah M. Corvene PC '99
 Anne M. Donaghy
 Valerie Fendt BB '10 & Alexa Bradley
 Erin Fletcher BB '12
 Leslie T. Gibbons
 Gary Gill-Austen
 David R. Godine
 Robert Goodman
 Nathanael B. Greene, Jr.
 Payson L. Greene
 Holly Grodsky PT '19, PA '20
 Brian Hall Guck
 Donald Halsted
 Jeri Hamlen & Joe Hammer
 Paul Hardy CF '78, in memory of
 Paul McDermott CF '83
 Marsha S. Hassett VM '98
 Jessica Henze BB '06
 Arlene Holtzman
 Walter & Lila Hunnewell
 Ken & Robin Isaacs
 Peter Jeffries
 Thomas & Doreen Johnson
 Jennie M. Kee, in memory of
 John J. Mohr



Lee Klein PA '96
 Sarah Kuhn
 Lawrence & Marcia Lapson
 Brock Leiendecker PC '16
 Kate Levy BB '18
 Stephen Logowitz
 Thomas S. McAndrews CF '03
 William McGuffin, PT '79
 Ray Negron
 John Nove BB '07
 Dale Olson & Alice McGuiggan,
 in honor of Bexx Caswell BB '09
 Shannon Ouellette
 Our Change Foundation
 Todd & Sharon Pattison
 John W. Pratt
 Clifford Reid
 Neil Rossman
 Ed Russell
 Michael Serotta
 Jo Ann Share PT '04, PA '05, in memory
 of David C. Betts PT '72, PA '20
 Ross & Kathleen Sherbrooke
 Zoe A. Sherman PT '00 &
 Christopher Kendig PA '00
 Cy Shuster PT '06

Nancy Skinner
 Stephen Snyder PT '77, in memory of
 David C. Betts PT '72, PA '20
 Bob Solorio
 Michelle Stranges PT '93, PA '94,
 in memory of David C. Betts
 PT '72, PA '20
 Toni Strassler
 Molly Sturges PA '00
 Joseph S. Tanen VM '87 &
 Nancy Phillips
 Abraham and Carmen Tesser
 Derek Trelstad PC '88
 Kenneth P. Tucker PA '82
 Susan H. Wasserman
 William D. Webster
 John W. Weeks, Jr.
 Brian L. Weldy CF '01
 Jerry Wheelock
 Gabrielle R. Wolohojian
 Hilary & Eric Woodward
 Nina Zannieri
 Anonymous (9)
 Anonymous, in memory of
 Joyce Hanna CF '96

\$1-\$99

Levi Barrett
 Barbara Bennett
 Hal Bloom
 Jim Briggs
 Cate Carulli PT '87, in memory of
 David C. Betts PT '72, PA '20
 Judith A. Cohen BB '98
 Charles Dietrick
 Lillian DiGiorgio
 Mario DiLeo
 Daniel Dover PA '90
 Mark Elenko
 William Etter
 Lori Foley BB '95
 Kathleen & John K. George, Jr.

Anne Andrus Grady
 Russell T. Greve
 Erin Hanley CF '07
 Kamala Harrington CF '15
 Barbara Adams Hebard BB '90 &
 Christopher Hebard
 David & Ann Ingram
 Robert A. Korbonits CF '79
 Christopher Larkin PC '04
 Joan Lawrie PT '06, PA '07
 Dennis W. CF '99 & Paula Lawton
 Linda & Steven Lembke
 Carl Lieberman, in memory of
 Isaac Sadigursky
 Dr. Michael J. Lyon

Judith B. McDonough
 Dorothy McMahon
 Robert V. Mullen
 John F. O'Regan BB '97
 Cynthia E. Rallis
 Sonja Piilgaard Reid BB '98
 Norma Rey-Alicea
 Elizabeth Rochow PT '19, PA '20
 Marion D. Wasserman
 Anonymous (3)



Grants

NBSS is grateful to benefit from generous institutional support—grants which contribute substantially to financial aid, facilities and equipment, endowed funds, general operating needs of the School, and more.

Restricted

Adelard A. & Valeda Lea Roy Foundation
CHT Foundation
City of Boston Office of Veteran Services
Copeland Family Foundation, Inc.
Ddora Foundation
Elisha-Bolton Foundation
Frank M. Barnard Foundation, Inc.
Hettinger Foundation
Liberty Mutual Foundation
Massachusetts Charitable Mechanic Association
Yankee Security Convention, Inc.
Anonymous (3)

Unrestricted

Clinton H. and Wilma T. Shattuck Charitable Trust
E & L Campbell Family Foundation
Elizabeth Taylor Fessenden Foundation
Ellen Abbott Gilman Trust
Mary and Kathleen Harriman Foundation
Massachusetts Cultural Council
Seth Sprague Educational and Charitable Foundation
Anonymous



Partners in Craft

Partners in Craft recognizes businesses and corporations that support the School with unrestricted contributions. NBSS extends our gratitude to these supporters across industries.

“When we look for workers, we look for people who really care about what they’re building and what they’ll leave behind. North Bennet attracts those kinds of people.”

— NICK BEASLEY PC '03, ADAMS + BEASLEY ASSOCIATES

Partner **\$10,000+**
Holt and Bugbee Foundation, Inc.

Builder **\$5,000**
Adams + Beasley Associates
Feinmann, Inc.

Associate **\$2,500**
BOND Brothers, Inc.
Columbia Contracting Corp.
F.H. Perry Builder

Supporter **\$1,000**
Firestone and Parson, Inc.
Inland Underwriters Insurance Agency
New England Design & Construction





Restricted gifts include those designated to specific NBSS departments, current-use scholarship funds, endowed funds, or other special projects and initiatives.

“My relationship with NBSS has many facets: alumnus, instructor, and equally important, as a donor. This incredible community requires more than our time, it requires our support, to ensure that faculty and students have all the resources they need to guarantee we remain a premier vocational institution.”

— BROCK LEIENDECKER PC '16, CA INSTRUCTOR

Restricted Gifts

Bookbinding

Todd & Sharon Pattison
W. Hansford Watford
Anonymous, in memory of Doris C. Freitag

Cabinet & Furniture Making Scholarship

Oneida Air Systems Inc.

Continuing Education

Betty Munson
Matthew & Laurie Nee

Jewelry Making & Repair

Raquel Alonso-Perez
Nina Zannieri

Locksmithing & Security Technology

Allegion
Arrow/Assa Abloy
Corbin Russwin/Assa Abloy
Don-Jo MFG., Inc.
H to O Supply, LLC
Ilco, Corp.
Pasek Security
Sargent/Assa Abloy
Anonymous

Piano Technology

Gregory Cheng
Lyle Hiorns PA '01, in support of the
Piano Technology Department Scholarship
Paul Klitzke PT '85, PA '86
William McGuffin, PT '79
Lewis PT '79, PA '80 & Toni Surdam
Anonymous

Preservation Carpentry

Thomas PC '88 & Rhoda Decatur

Violin Making & Repair

Richard Greener & Carrie Pascoe,
in memory of George C. Greener
Anonymous

NBSS General Scholarship Fund

Nelly Balloffet,
in memory of Doris C. Freitag
Lisa Unger Baskin
Barbara Bennett
McKey BB '11 & James Berkman,
in memory of Doris C. Freitag
The Crawford-Fang Fund of Fidelity Charitable,
in memory of Doris C. Freitag
Samuel & Avril Ellenport,
in memory of Doris C. Freitag
Valerie Fendt BB '10 & Alexa Bradley
Amanda Hegarty BB '91 & Mark Esser,
in memory of Doris C. Freitag
Dr. Michael J. Lyon
Consuela G. Metzger BB '93,
in memory of Doris C. Freitag
Nicolas Minutillo
John F. O'Regan BB '97,
in memory of Doris C. Freitag
James Reid-Cunningham, BB '90,
in memory of Doris C. Freitag
Catherine & Phil Saines
Deborah Wender,
in memory of Doris C. Freitag
Anonymous



The 1881 Society

Named for the year of our founding, the 1881 Society recognizes members of our community who have included NBSS in their estate plans. By supporting the School through planned giving, the 1881 Society ensures a future for craft and trade education.

Natalie Q. Albers
Dorothy Bell PT '99
Barbara M. Brenzel
Donna Byrd PT '81
Richard & Betsy Cheek
Dr. Thomas Divilio
John M. Driggers CF '87
Irving CF '86 & Shirley Gerber
Louis Giovanella
Miriam Graham PT '75
James Stewart Greto
Deborah M. Hauser
John Herbert CF '06
Marilyn L. BB '88 & James L. Heskett
Elizabeth Ann Hutchins
Kristen N. Johnson
The Edith M. Kemp Revocable Trust of 2003
Vin CF '13 & Becky Kennedy
John McAlister
Walter McDonald, Associate Director
Emeritus
Paul & Carla McDonough
John J. Mohr
Jane Callahan Moore CA '88
David Nadworny PT '72
John Nove BB '07
Selma Ordewer
The Morgan Palmer Foundation
David Popwell
Donna Soodalter-Toman
Steven B. Soppe
Keith Ward PT '12, PA '13
Robert Weir & Deborah Krupenia
Deborah Wender
Valerie A. Wyckoff BB '89
Anonymous

If you have included NBSS in your estate plans and are not listed here, please contact Nicki Downer at ndowner@nbss.edu.



Gifts to Named Funds

Alex Krutsky Memorial Fund

Gary Koepfel & Anastasia Vassos
Maria Lindgren
Dennis McNally

David Betts Scholarship for Basic Piano Technology

Patrick Branstetter PT '10, PA '11
Sue Brown PT '96, PA '97
Benjamin Cross PT '17, PA '18
Robert Gallagher PA '00
Marie Jo PT '23
Michael Jurewicz
Mark Mikkelsen PT '94, PA '95
Brooks LTD Piano Products LLC
Piano Technicians Guild
Barbara Pease Renner PT '78,
in memory of David C. Betts
PT '72, PA '20
Keith Ward PT '12, PA '13

NBSS Scholarship Endowment

John J Mohr 2006 Revocable Trust

Greg Comly Scholarship Fund

Michael & Leslie Comly

Hauser Family Fund

Deborah M. Hauser

Impact Scholarship

Heather Tauck PC '15

Joseph Newman

Bookbinding Scholarship

Sherelyn Ogden
Anonymous

Kennedy Family Fund for Veterans and Immigrants

Jonathon Clark CF '25

Lisa von Clemm

Bookbinding Scholarship

Walter & Lila Hunnewell

Marilyn L. Heskett Scholarship

James L. Heskett, in memory of
Marilyn L. Heskett BB '88
Robert E. Kavey, in memory of
Marilyn L. Heskett BB '88
Toby M. Sloane, in memory of
Marilyn L. Heskett BB '88
Allen L. Snyder, in memory of
Marilyn L. Heskett BB '88
WCM Investment Management,
in memory of Marilyn L. Heskett
BB '88
Mark & Patricia Willemssen,
in memory of Marilyn L. Heskett
BB '88

Cabinet & Furniture Department Northfield Equipment Project

Bob & Bobo Devens
Morgan Fog CF '24
Kirk S. Hachigian
Robert Perry Harris CF '24
John Heveran CF '25
Mark Richey Woodworking
Douglas Nelson CF '23
Lance Patterson CF '79
Sarah Turner & Suzanne Pugh
Jonathan Wachs CF '15

Sanborn Mills Scholarship Fund

F. Colin Cabot

Stanley M. Sherman Memorial Fund

Daniel J. Sherman, in memory of
Stanley M. Sherman

Walter McDonald Scholarship Fund

Walter McDonald,
Associate Director Emeritus

Western Ohio Woodworkers Endowment

Scott D. Phillips
Western Ohio Woodworkers
Organization

Gifts In-Kind

Allegion

Arrow/Assa Abloy

Jeffrey Altepeter BB '99

Big Night Live

Brooks Limited

Michael Burrey

CB Fisk Inc.

Charles Faulk Tools

Corbin Russwin/Assa Abloy

Darlow Christ Architects

Don-Jo MFG., Inc.

Alexandra Dupuy & Richard Meyer

Erwin's Piano Forte Supply

H to O Supply, LLC

John Heveran CF '25

Ilco, Corp.

Cyndy Kashnor

Ellen Kaspern CF '03

Charles L. Kline CF '05

Nat Kuhn

Ted Leigh

Nick Maraldo CF '07

Walter McDonald,

Associate Director Emeritus

Bob Miller CF '11

Robert D. Mussey

Steven O'Shaughnessy PC '99

Lily Owyang

Pasek Security

Lance Patterson

Todd Pattison

Elizabeth P. Powell

Reader's Hardwood

Reyburn Piano Works

Reyburn Tools

Ronson Piano Hammer Co.

Sargent/Assa Abloy

Schaff Piano

Shattuck's Ace Hardware

Sharon Stetson

Urban Adventours

Anonymous

NBSS Named or Endowed Funds

The following funds and scholarships, established over time and sustained by generations of North Bennet Street School alumni and friends, remind us of the legacy and impact of philanthropy across our School community. Some funds provide unrestricted support, some have special designations, and all demonstrate a meaningful investment in our core mission and values.

Alex Krutsky Memorial Fund
Amelia Peabody Facilities Endowment
Board of Advisors Scholarship
Colonel Ruby W. Linn Veterans Program Endowment
David Betts Scholarship for Basic Piano Technology
Gladys Brooks Foundation Scholarship
Harold Whitworth Pierce Scholarship
Hauser Family Fund
Hettinger Fund for Strategic Online Project*
Julia Camilla Larocque Memorial Scholarship
Lisa von Clemm Bookbinding Scholarship
Manton Scholarship Endowment
Marilyn L. Heskett Scholarship
Miguel Gómez-Ibáñez Fund for Facilities
Kennedy Family Fund
Shawmut Street Scholarship*
Stanley M. Sherman Memorial Fund*
Surdam-Murphy Scholarship
Violin Making Award for Excellence in Craftsmanship
Walter McDonald Scholarship
Western Ohio Woodworkers Scholarship
Windgate Foundation General Endowment

* Temporarily Restricted Funds



North Bennet Street School's mission is to train students for careers in traditional trades that use hand skills in concert with evolving technology, to preserve and advance craft traditions, and to promote greater appreciation of craftsmanship.

Credits	Editorial:	NBSS
	Writing:	NBSS, Danna Lorch
	Photography:	Josephine Sittenfeld, NBSS
	Design:	Studio Rainwater