





# Contents

## WELCOME

Letter from the President 2

## FEATURES

Charting the Course 4  
Crafting History 6  
An Inviting Conversation 12  
Maintaining Excellence 16

## ACTIVITIES & ADMINISTRATION

Administration 20  
Activities 24  
Financial Overview 28

## OUR DONORS

The Shaw Society 34  
The NBSS Fund 36  
Grants 40  
Partners in Craft 41  
Restricted Gifts 42  
NBSS General Scholarship Fund 43  
The 1881 Society 43  
Gifts to Named Funds 44  
Gifts In-Kind 45  
NBSS Named or Endowed Funds 45

**Dear Friends,**

As we reflect on another remarkable year at North Bennet Street School, I am filled with gratitude and pride for the progress we have made together. This year's achievements underscore our collective dedication to our mission of providing an exceptional, transformative education in craft and trade.

First and foremost, thank you to the many donors who are listed in this Annual Report. Your generous contributions have been the backbone of our continued success, enabling us to expand our reach, enhance our facilities, and provide meaningful scholarships to deserving students. We are deeply grateful for your unwavering support, and are excited for all that we'll accomplish together in the years ahead.

This past year has brought significant changes to NBSS, many of which are highlighted in this publication. As you'll read, we continued with initiatives that enhance our curriculum, expand our reach, and ensure the sustainability of our institution. These efforts have fostered innovation in our educational offerings, and reinforced our leadership in our fields. Ultimately, they advance our ability to provide students with a life-changing experience toward reaching their highest potential.

As we look ahead, I am thrilled to announce the launch of *Meaningful Work*, a targeted fundraising effort aimed at growing our annual resources for near-term opportunities, and investing in our endowment to further secure our future. The support generated through this campaign will enable us to broaden access to our training, support faculty in delivering the highest quality instruction, position our fields for the future, and continue to serve our community for generations to come.

I invite each of you to join us at this exciting time. Whether you are an alum, donor, partner, or friend, your involvement is crucial to our success. I hope you will reach out to learn more about how you can contribute, as the possibility of our School includes all of us. Your generosity, time, and advocacy will help us continue to transform lives through the power of hands-on education.

Thank you for being an integral part of the NBSS community. Together, we are building a future where skilled hands and creative minds shape a better world.

With gratitude,



**SARAH TURNER, PRESIDENT**



**WITH GRATITUDE**

All of us at the School extend our heartfelt thanks to our outgoing Board Chair, **Genie Thorndike CF '16**, for her steadfast leadership that guided NBSS through significant growth. Under her tenure, we strengthened our programs and our volunteer groups, laying a strong foundation for the future. We have all benefited from her dedicated partnership.

As Genie steps back, we are pleased to welcome our new Board Chair, **Tom Piemonte**. With his wisdom, passion, and vision, we look forward to continued success and collaboration.



# Charting the Course

Achieving Our FY23–FY28 Strategic Plan

In December 2022, we introduced a comprehensive strategic plan to fortify our School's position as a beacon of craft and trade education. Two years in, this visionary plan is unfolding through the collective energy and effort of staff, faculty, and supporters across NBSS. Together, we are poised to continue this momentum, driving growth and transformation in the years ahead.

## Expanding Reach & Access

Since unveiling our plan, we have initiated several strategic efforts to engage both new and existing communities while attracting a broader spectrum of students. These initiatives are not only elevating our profile, but also making the unparalleled training at NBSS more accessible than ever before.

- ✓ Achieved historic year-over-year growth in inquiries for Career Training programs and Community Education classes, nearly doubling our full database in the last three years.
- ✓ Increased enrollment in key programs, including Jewelry Making & Repair, Preservation Carpentry, Violin Making & Repair, and Cabinet & Furniture Making, while sustaining class sizes in most other programs.
- ✓ Appointed a Director of Community Education (CE) to stabilize and grow offerings for adults, youth, partners, and others.
- ✓ Created a new CE Coordinator position, helping to grow our class offerings and partnerships.
- ✓ Expanded CE classes to an unprecedented number of offerings this past fiscal year, bringing about our five highest monthly registrations ever.
- ✓ Grew CE partnerships, including those for high school youth (Madison Park), underrepresented individuals (The Chairmakers Toolbox), and veterans (Boston Vet Center).
- ✓ Expanded our digital audience through strategic initiatives such as our *In The Making* public programming.
- ✓ Increased attendance at in-person events, including our Open House, reaching historic numbers for total registrations and new contacts.

## Supporting Excellence for Faculty & Students

Our unwavering commitment to a transformative education guides every decision we make. To sustain this, we provide our faculty with the necessary resources to deliver exceptional instruction. We also extend financial, career, and integrated “wrap-around” support to our most important constituency: our students.

- ✓ Established and expanded a Teaching Assistant (TA) program, ensuring the Career Training Programs are supported by Teaching Assistants, with roles tailored to each program's needs.
- ✓ Provided over \$1,000,000 in financial aid to qualified students in FY22, FY23, and FY24.
- ✓ Conducted a comprehensive salary study for all faculty and staff, resulting in increased compensation that aligns with industry standards, and acknowledges the unique skill set of our instructors as both practitioners and educators.
- ✓ Made thoughtful increases in CE Instructor rates to maintain and grow a deep bench of talent across disciplines.
- ✓ Redefined and hired for the Director of Student Support & Career Services role to better serve our students before, during, and after attending NBSS.

## Strengthening Our Operations & Identity

Securing the long-term sustainability of NBSS is a cornerstone of our strategic plan. We have undertaken several critical projects to enhance our operations, strengthen our facility, and ensure financial stability. These initiatives are designed to honor our rich legacy while adapting to the evolving needs of our institution and the broader community.

- ✓ Created an NBSS Values statement, a foundational tool supporting faculty, staff, students, and our broader community.
- ✓ Developed the position and hired a Senior Director of People & Operations.
- ✓ Implemented and adopted new data and information systems, including platforms for Development and Admissions, enhanced internet access/stability, and networked storage solutions.
- ✓ Increased the diversity of NBSS volunteer leadership.

Support our strategic priorities by contacting Colleen Walsh Powell, Director of Development at [cwpowell@nbss.edu](mailto:cwpowell@nbss.edu) or 617-227-0155 x170.

This year, we will call on our entire community to contribute to our growth and success, through annual giving and focused endowment growth. With your support, we will lead the way to ensure that NBSS remains a place where every individual can realize their full potential.

# Crafting History: Rare Tools Back in Action

## Student-Crafted Display Cases Showcase Timeless Tools for Bookbinding and Preservation Carpentry

Once in a while, the perfect elements for a big project just line up. That's exactly what happened this year when **Laurence "Laurie" Lombard** made a generous gift to the NBSS Fund.

Boosted by Laurie's gift—and all gifts to the Fund—rare tool collections gifted to the Bookbinding and Preservation Carpentry programs are now fittingly displayed in well-crafted cabinetry built by Carpentry (CA) students.

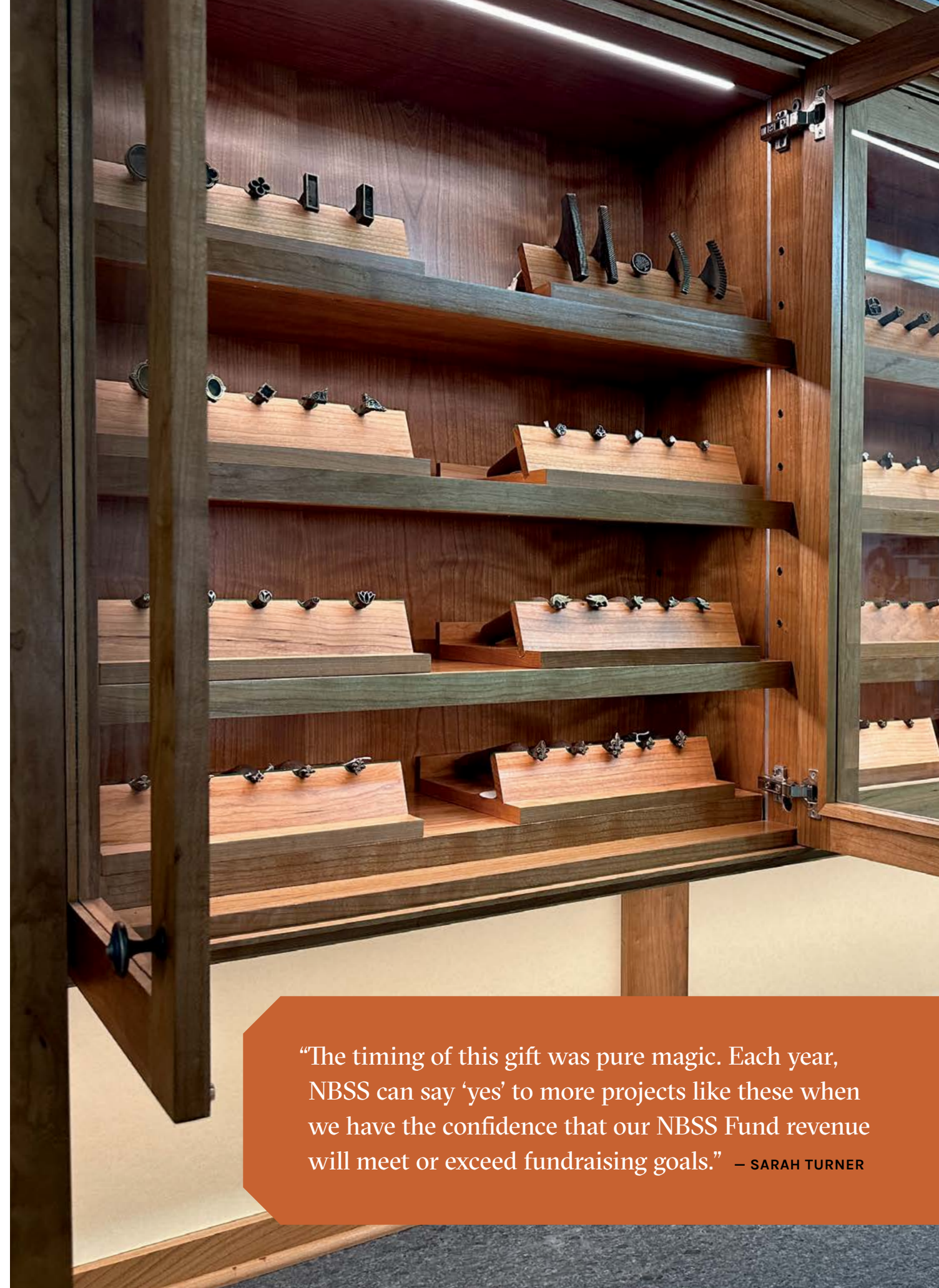
Though properly showcased, the rare tools aren't intended to be museum pieces that sit untouched. They were donated to NBSS with the intention that they would be cared for properly and actively used by NBSS students.

"NBSS is known in craft and preservation circles as a place that not only appreciates collections like these, but in the right circumstances can also put them to use," said NBSS President **Sarah Turner**. "The various tools and brasses for Bookbinding, and the wood molding planes given to Preservation Carpentry, are all gorgeous objects. It's easy to imagine the complex and sophisticated work that our students can take on with access to these rare tools."

The Lombard family has been part of the NBSS story across multiple generations. Laurie's father was an attorney at Boston-based law firm Hemenway & Barnes and served as Board member for the School in the 1960s.

Since receiving the donated collections a few years ago, the School had hoped to build proper showcases to preserve and protect the rare tools. When Laurie asked that his gift go to an immediate need, he was delighted to learn it would help make this project possible.

"The timing of this gift was pure magic," Sarah shared. "Each year, NBSS can say 'yes' to more projects like these when we have the confidence that our NBSS Fund revenue will meet or exceed fundraising goals. There's no other way around it, unrestricted funds make this School run... from supplying lumber, to stocking the food pantry, and funding a student project like this. I am so happy to see this work move forward with generosity like Laurie's."



"The timing of this gift was pure magic. Each year, NBSS can say 'yes' to more projects like these when we have the confidence that our NBSS Fund revenue will meet or exceed fundraising goals." — SARAH TURNER



## Building the Showcases

CA Department Head **Peter Smith PC '04** saw this project as a great learning opportunity for students. He approached CA Instructor **Brock Leiendecker PC '16**, CA graduate **Eric Zankowski CA '13**, and Cabinet & Furniture Making graduate **Kolin Schmidt CF '21** to assist with the cabinetry's design. When Peter transitioned to off-site client work with the Carpentry class, Brock took over and was instrumental in seeing the cabinetry project through, from initial build through to installation.

For Bookbinding, the large-scale showpiece incorporates high-end features (Hafele lighting, leather backplash (not shown), glass doors backed by marbled paper), while the Preservation Carpentry cabinet is similarly designed but less ornate. Both are readily accessible by their respective programs, and each of the rare tools will enjoy a second life in the hands of NBSS students for years to come.

**“We make sure that any lesson in cabinetry is not an assembly line. Students were paired up to get the chance to work on all steps of the building process, from learning the necessary nomenclature of the parts and tools to drafting, building the plywood carcasses, and milling the doors and glass door fronts with cup hinges and hardware.”**

**— BROCK LEIENDECKER PC '16**



One student who got a tremendous amount out of the process was **Frank Marr CA '24**, who came to NBSS from a previous career in property management. Frank was always someone who loved working with his hands but “ignored the instinct” until it became obvious that he was far more interested in working alongside the skilled tradespeople at work than managing them from a desk.

The cabinet project served as Frank’s swan song at NBSS. Before Commencement, the bookbinding tools cabinet was installed in the hallway outside the School’s conference room, where students posed for photos with a lot of pride.

Frank learned a new skill or tool every single day that he worked on the cabinet projects, know-how that will help him at the new job he’s started in residential carpentry. “This program gave me the knowledge I needed to make a living in an industry that makes me happy,” Frank shared.

Speaking to the full project, Brock shared, “This project was a unique opportunity for our students to not only hone their technical skills but also to connect with different programs and honor a legacy of fine craftsmanship. Seeing their pride in the final product and knowing it will serve future generations is incredibly rewarding.”

“This program gave me the knowledge I needed to make a living in an industry that makes me happy.” – FRANK MARR CA '24



## About the NBSS Fund

Every year, members of the NBSS community and its wider network of supporters generously give to the NBSS Fund, which aims to meet the School’s greatest needs and operating costs. You can support the next generation of skilled tradespeople with your gift of any size to this critical source of funding.

Here are just some of the ways the NBSS Fund provides stability and support across the School.

### SCHOOLWIDE

- ▶ Class materials
- ▶ Student Learning Specialist
- ▶ Professional Development for all employees (\$500 each per year)
- ▶ Student Food & Essentials Pantry
- ▶ Student Business Courses
- ▶ Guest instructors
- ▶ Public programs and lectures
- ▶ Licensing fees for software and databases

### PROGRAM-SPECIFIC

- ▶ Bennet Town in CA
- ▶ Access control training in LK
- ▶ Travel abroad for VM students
- ▶ iPads & handtools in PT
- ▶ Nantucket field project in PC
- ▶ Laptops & bench lamps in JM
- ▶ Conference fees for PA students

# An Inviting Conversation



NBSS is awarded an inaugural IDEAL Internship Grant from the Decorative Arts Trust

WHEN SARAH TURNER, North Bennet Street School's President, first received the call for applications to the IDEAL Internship Grant, the School was already thinking about ways to formally include more voices in our work. She remembers, "Our community was in the thick of a campus-wide conversation about improving diversity, equity, and inclusion. One of our strategic goals was to create more offerings for the general public, to introduce craft to broader audiences."

Awarded by the Decorative Arts Trust, a non-profit dedicated to fostering appreciation and study of the decorative arts, the grant set out to create curatorial opportunities, improve access, and foster mentorship for students of color in the museum field. Each grant offered a generously paid, months-long internship, enabling an aspiring curator to study and experience every aspect of exhibition design, installation, and curation.

Matthew Thurlow, Executive Director at the Decorative Arts Trust, explained, "Access to the museum field for students of color has been hindered by innumerable factors, but the two elements that we addressed through the IDEAL Internship program are those of the visibility of the arts as a viable academic and professional path and the financial backing to ensure that underrepresented students have the necessary support to pursue these opportunities."

The IDEAL Grant's timeline lined up perfectly with the *In the Making Exhibition*, a group show already planned to open in September 2023 under the same name as the School's popular four-season *In the Making* livestreamed series. The exhibition would bring to NBSS various works by the show's guests—some of the same items previously only seen by viewers online. Sarah said, "I loved the idea of a call-and-response between the show and the exhibition, which was a natural extension of *In the Making*."







When the show opened in the NBSS front lobby in September 2024, a collage incorporating the voices of *In the Making* participants in the gallery's center became a reality thanks to Ja'Hari's vision. Viewers could read wall texts and then use their phones to scan QR codes linking to extended interviews.

After applying for the Grant, NBSS received exciting news that the School had been selected as a recipient. **Kristen Odle**, the host of *In the Making* and the School's Retail & Exhibit Manager, led a search for the intern candidates and later co-curated the exhibition. Considering submissions from candidates across Boston, **Ja'Hari Ortega**—a current student in the NBSS Jewelry Making & Repair (JM) program—was the clear choice for the assignment.

Kristen shared, "When I read over Ja'Hari's statement, I was struck by how she referred to a curatorial approach for this exhibition that would bridge the blurry gap between art and craft. She totally won me over."

Ja'Hari came to NBSS in the spring of 2022 after graduating from MassArt's Interrelated Media program. A maker at heart, she viewed

the JM program as a deep dive into jewelry fabrication, which would extend and support her pre-existing sculpture practice. Throughout her artistic career, Ja'Hari has consistently pursued her craft parallel to a curatorial practice. At MassArt, she worked with a community arts initiative, curating shows in local cafes and galleries. She also worked as a curatorial intern at the MassArt Art Museum and the exhibitions department at the Museum of Fine Arts, Boston (MFA).

The internship began in the summer of 2023 with a listening tour for networking and gathering ideas for the exhibition. Kristen and Ja'Hari visited local workshops, museums, and studios, including meeting with the mounts department at the MFA, taking an art collection tour at The Quin House (a private Boston club), and a studio visit to the Artisans Asylum maker space.

Towards the end of the summer, makers' work began arriving at NBSS. Unpacking the wooden crates and beginning to imagine the exhibition installation and design was when Ja'Hari got to make her mark. "It was fun sketching the floorplan and re-connecting with the MFA mounting department for advice. I even got to build my own mounts for a few of the pieces," she said.

Ja'Hari said, "Kristen was great to work with—she was willing to help me turn my installation vision into something attainable. She also respected the contributions, perspective, and feedback that I provided in terms of representation, diversity, and education."

Ja'Hari said that curating a show that incorporated so many diverse voices was a great launching point. "It was a great start,

and I hope to see more access to information and opportunities that will help transform the future of these industries and educational spaces."

Speaking from the Decorative Arts Trust perspective, Matthew said, "We have a great admiration for North Bennet's role in preserving the craft traditions of decorative arts. This internship offered a unique and meaningful chance to bridge the role of maker and curator through Ja'Hari's contributions to the exhibition."

"Our School's partnership with the Decorative Arts Trust has been invaluable," Sarah shares. "It was such a natural fit of shared work to expand our diversity, equity, and inclusion efforts, while providing students with transformative opportunities. Thank you to everyone involved in making this program a success—our students, staff, partners, and supporters alike."



*"In the Making is about sharing stories, giving representation, and offering a platform to under-represented and marginalized crafts and tradespeople. Ja'Hari helped make that possible."* — KRISTEN ODLE

# Maintaining Excellence



How the Cabinet & Furniture Making Program Revamped Its Machine Room for the Next Generation



**EARLY IN 2023**, a conversation among faculty members at NBSS sparked an idea that would soon transform the Cabinet & Furniture Making (CF) program. The subject at hand was the aging equipment in the machine room, which, despite decades of service, was beginning to falter under the heavy use of 40+ students across decades. As the machines required regular adjustments and repairs, instructors found themselves spending more and more time as mechanics than educators. This realization led to a consensus: it was time for a major upgrade.

**Jamey Pope CF '06**, the CF Department Head, recalls how the initial idea came to life. **"Matt Wajda CF '00** and I were going over the equipment and in an exasperated moment one of us said something about just starting over from scratch. But as we left later that day, each of us thought, 'Why are we just

daydreaming? Let's find out how much this would cost.'" This moment of curiosity quickly evolved into a thoughtful plan to overhaul the machine room with new equipment from the Northfield company, a Minnesota-based manufacturer known for its durable and reliable machinery.

The need for new equipment was clear, but the funding required was not something the school could easily absorb. The estimated cost for the project was more than \$200,000, a significant sum that necessitated outside support.

Fortunately, the donor community rallied behind the cause. Over the next two years, Jamey and the NBSS Development team worked tirelessly to raise the necessary funds. The effort was a success, bringing in over \$210,000 from a small but enthusiastic group of donors, including graduates, some board members, and corporate supporters.

The need for new equipment was clear, but the funding required was not something the school could easily absorb. Fortunately, the donor community rallied behind the cause.

24

donors participated

\$210k

raised

6

new machines

The success of the fundraising campaign allowed the School to move forward with the purchase of six new machines. But the project didn't stop there. In addition to the new machines, the machine room underwent a complete reorganization, including updated electrical and ductwork. This overhaul not only improved the functionality of the space but also significantly enhanced the health and safety conditions for both students and faculty. The work was completed in just two months by CF Instructor (and jack-of-all-trades) **Nick Maraldo CF '07**, overseen and coordinated by Marc Dreyfus, Director of Facilities & Technology.

The impact of the upgrade is far-reaching. For students in the CF program, the new machines offer a more reliable and efficient learning environment. For instructors like Matt, the new equipment means more time to focus on teaching rather than maintenance.

"Watching Matt try to keep all the machines tuned throughout the year was a huge challenge," Jamey recalls. "Now, with the quality of this new equipment, there's less time spent on maintenance and more time working with students."

The benefits extend beyond the full-time students in CF. The Community Education department, which offers its signature Three-Month Furniture Making Intensive in the CF program space each summer, also stands to gain from the upgraded facilities.

"Having CE students come in and work with this extremely high-quality equipment sets the status of our department," Jamey explains. "The new machines not only elevate the learning experience but are also a great recruitment tool for future students."

"With the quality of this new equipment, there's less time spent on maintenance and more time working with students."

— JAMEY POPE CF '06, DEPARTMENT HEAD

The completion of this project marks a new chapter for the CF program at NBSS. With top-quality equipment, an optimized learning environment, and a commitment to excellence, the program is poised to continue its tradition of producing highly skilled and knowledgeable graduates, ready to make their mark in the world.

As Provost **Claire Fruitman CF '96** summarizes, "We have a fabulous faculty, we have a great curriculum. We moved into this facility, which is fantastic, and now we have an amazing machine room to go with all of that. Even though I didn't think it could get much better, this moves the program to a whole new level."



# Staff & Faculty

## STAFF

**Sarah Turner**, President

**Chloe Benisvy**, Community Education Coordinator  
*through July 2024*

**Catherine Canney**, Senior Director of People  
& Operations *from Sept 2024*

**Brittany Carlson**, Director of Community Education

**James Dergay**, Director of Financial Aid

**Kevin Derrick**, Director of Marketing & Engagement

**Jamila Derring**, Community Education Coordinator  
*from July 2024*

**Nicki Downer**, Development Coordinator

**Marc Dreyfus**, Director of Facilities & Technology

**Claire Fruitman CF '96**, Provost

**Annie Hayes**, Director of Institutional Support

**Corie Melaugh PT '21, PA '22**,  
Admissions Coordinator *from Feb 2024*

**Marcia Michelson**, Assistant to the President

**Bob Miller CF '11**, Community Education Technician

**Nathan Mohney PT '22, PA '23**,  
Academic Administrator *from Dec 2023*

**Tafadzwa Musekiwa**, Director of Student Support  
& Career Services *through Nov 2023*

**Rob O'Dwyer**, Director of Admissions & Enrollment

**Kristen Odle-Devine**, Retail & Exhibit Manager

**Marlow Penree**, Front Desk Receptionist *from Aug 2023*

**Colleen Walsh Powell**, Director of Development

**Barbara Rutkowski**, Associate Director of  
Marketing & Communications

**Ronald Santos**, Building Maintenance

**Ada Schenck VM '22**,  
Facilities Coordinator *through Aug 2023*

**Sharon Scully Stetson**, Associate Director  
of Admissions

*Lists reflect Board, Program Advisory Committees, Faculty,  
and Staff for FY24 only (8/1/23-7/31/24)*

*TA = Teaching Assistant*

## FACULTY

### Bookbinding

Jeffrey Altepeter BB '99 (Dept. Head)

Martha Kearsley BB '95

Ariana Rutledge BB '22 (TA)

### Carpentry

Peter Smith PC '04 (Dept. Head)

Brock Leiendecker PC '16

Laurie Vance CA '23 (TA)

### Cabinet & Furniture Making

Jamey Pope CF '06 (Dept. Head) *from Sept 2024*

Ellen Kaspersn CF '03 *from Sept 2024*

Nicholas Maraldo CF '07 *from Sept 2024*

Lance Patterson CF '79

Matthew Wajda CF '00

Aedan Fitzgerald CF '23 (TA)

Lily Tilton CF '23 (TA)

### Jewelry Making & Repair

Tracey Jenkins Darji JM '05 (Dept. Head) *from Sept 2024*

Haley Filamond JM '20 *from Sept 2024*

Evan Cyr JM '20 (TA)

### Locksmithing & Security Technology

Eddy Michel Dacius LK '13 (Dept. Head)

Christian Locke LK '22 (TA)

### Piano Technology (Basic and Advanced)

Debra Cyr PA '93 (Co-Dept. Head)

Emily Townsend PT '07, PA '08 (Co-Dept. Head)

Hillary York PT '12, PA '13

Will Roper PT '19

Jennifer Gold PT '23 (TA) *from Jan 2024*

Corie Melaugh PT '21, PA '22 (TA) *through Dec 2023*

Thomas Porter PT '20, PA '21 (TA) *through Mar 2024*

### Preservation Carpentry

Steven O'Shaughnessy PC '99 (Dept. Head)

Michael Burrey

Thomas Eldridge PC '21 (TA)

Sophie Linnell PC '21 (TA)

### Violin Making & Repair

Roman Barnas (Dept. Head)

### Community Education

Eli Cleveland CF '09, Three-Month Furniture  
Making Intensive Instructor

# Activities & Administration

# Board of Directors

**Genie Thorndike CF '16**, Chair  
**Dr. Lindsa McIntyre**, Co-Vice Chair  
**Tom Piemonte**, Co-Vice Chair *from Mar 2024*  
**Matthew P. Day**, Treasurer  
**Mark J. Hauser**, Clerk  
**Sarah Turner**, President

## DIRECTORS

David Ambler CF'11 *through Dec 2023*  
Brad Bedingfield *through Dec 2023*  
Bruce Dayton  
Daniel Day Lewis *from Mar 2024*  
William R. Hettinger  
Brent Hull PC '93 *through Dec 2023*  
Will Iselin  
Rob Leahy *from Dec 2023*  
Cynthia Malm *through Dec 2023*  
Marc Margulies *from Mar 2024*  
James Mason  
Kevin McCaskill  
Patrick Muecke CF '97  
Deb Pasculano  
Thomas C. Piemonte *from Dec 2023*  
Paul Reidt  
Norma Rey-Alicea  
Colin Urbina BB '11 *through Dec 2023*  
Keith Ward PT '12, PA '13 *through Dec 2023*  
Vaughn Waters  
Juliana Wong

# Board of Advisors

Melba Abreu  
Corey Allen  
David Ambler CF '11 *from Jan 2024*  
Brad Bedingfield *from Jan 2024*  
McKey Berkman BB '11  
Brian Broderick *through Dec 2023*  
Colin Cabot *through Dec 2023*  
Rebecca Greenleaf Clapp  
Lauren Cook  
Edward S. Cooke  
Cheryl Delgreco  
Kate Durrane  
Simon Eccles *through Dec 2023*  
Janet English  
Giselle Futrell  
John F. Gifford JM '97, CF '01  
Andrew Haines

Kamala Harrington CF '15  
Nancy Hoffman *through Dec 2023*  
Brent Hull PC '93 *from Jan 2024*  
Peder C. Johnson  
Charles L. Kline CF '05  
Marc Margulies *through Mar 2024*  
Walter McDonald, Associate  
Director, Emeritus *through Dec 2023*  
Nick Offerman  
Thomas Piemonte *through Dec 2023*  
Katherine Ruffin *through Dec 2023*  
Heidi Schwegler  
Colin Urbina BB '11 *from Jan 2024*  
Frano Violich  
Keith Ward PT '12, PA '13 *from Jan 2024*  
Thomas Williams, Jr.,  
Executive Director, Emeritus

“The fact that NBSS is keeping alive an important part of human culture is something that everyone can appreciate.”

— MARC MARGULIES



# Program Advisory Committees

## Bookbinding

Mary Patrick Bogan  
Bexx Caswell BB '09  
Samuel Ellenport  
Babette Gehnrich  
Paul Parisi  
Graham Patten  
Todd Pattison  
James Reid-Cunningham BB '90  
Deborah Wender

## Carpentry

Wade Bergeron  
Katherine Massaro Durrane  
Kurt Fieldhouse CA '93  
Stephen Gould PC '01  
Edward Howland  
Arthur Massaro  
Barry A. Mann PC '97  
Patrick O'Shaughnessy CA '06  
Anthony Samale

## Cabinet & Furniture Making

Eli Cleveland CF '09  
Janet Collins CF '97 *through Apr 2024*  
William Doub CF '74  
Sean Fisher CF '94  
Brian Kelly CF '95  
John McCormack CF '88  
Gregory Porfido CF '89

## Jewelry Making & Repair

Craig Adamson *from Apr 2023*  
Michael Binnion *from Mar 2023*  
Ilah Cibis JM '05  
Linus Drogs  
William Firestone  
Alan Leavitt  
Colleen Matthews JM '12  
Christopher Ploof *through Jan 2024*  
George Simpson



## Locksmithing & Security Technology

Daniel Heyligers  
Stephen McKinney  
Virginia M. Newbury  
Jonathan Nir LK '17, CA '18  
Michael Samra LK '87  
Jeffrey G. Schwartz  
Dave Troiano  
Rick Weisse

## Preservation Carpentry

Robert A. Adam  
William Lewis Barlow, IV  
Sara B. Chase  
Matt Diana PC '10  
William Finch  
Anne Grady  
Brian Pfeiffer  
Denis Sempregon

## Piano Technology

George Crawford  
Lawrence Fine PT '76  
Anne Garee  
Michael Jurewicz  
Xiaodan Liu PT '07, PA '08  
Sean Mallari PT '05, PA '06 *through Nov 2023*  
Jude Reveley  
Lewis J. Surdam PT '79, PA '80

## Violin Making & Repair

Kevin Kelly VM '92  
David Polstein VM '89  
Christopher Reuning  
Benjamin Ruth  
Andrew Ryan

# Career Training Program Activities

The items listed represent just a fraction of the many projects, lectures, guests, and field work from across all of our Career Training programs in the last fiscal year (August 2023 through July 2024). For a current, broader selection of activities, please check out our website [nbss.edu](http://nbss.edu) and social media channels @nbssboston.



- BB Bookbinding
- CF Cabinet & Furniture Making
- CA Carpentry
- JM Jewelry Making & Repair
- LK Locksmithing & Security Technology
- PC Preservation Carpentry
- PT Basic Piano Technology
- PA Advanced Piano Technology
- VM Violin Making & Repair
- CE Community Education: Three-Month Furniture Making Intensive:

## FIELD TRIPS

- BB New England Document Conservation Center, Andover, MA
- Pergamena Tannery, Hudson Valley, NY
- CA Guerney's Lumber, Brockton, MA
- JLC Live Convention, Providence, RI
- CF Old State House, Boston, MA
- Mark Richey Woodworking, Newburyport, MA
- JM Museum of Fine Arts and the MFA Conservation Lab, Boston, MA
- Jewelers Building, Boston, MA
- LK State Street (formerly Beth Israel), Boston, MA
- Assa Abloy, New Haven, CT
- PT/PA Steinway and Sons, New York, NY
- Symphony Hall, Boston, MA
- PC 1780s Yin Yu Tang House at the Peabody Essex Museum, Salem, MA
- 1796 Lyman Estate, Waltham, MA
- VM Reuning & Son Violins, Brookline, MA
- Skinner Auction House, Marlborough, MA
- CE Museum of Fine Arts, Boston, MA



For a full listing of this year's field trips, check out our 2024 edition of **Benchmarks Magazine**.

## GUEST LECTURERS

- BB **Jim Reid-Cunningham BB '90:** Leather Rebacking  
**Todd Pattison:** Vellum Manner & Adhered Boards  
**Jeff Peachey:** Knife Sharpening  
**Chena River Marblers (Regina & Dan St. John):** Paper Marbling  
**Christopher Sokolowski:** Prepared Tissue for Paper Mending  
**Chela Metzger BB '93:** Entering Conservation  
**Lori Foley BB '95:** Disaster Planning & Recovery
- CA **Eric Zankowski CA '13:** Cabinet Making
- CF **Andy Glenn CF '08:** Ladderback Chairs  
**Elizabeth Grab BB '24:** Leatherwork in Furniture  
**Peter Follansbee:** Green Woodworking  
**Brad Wolcott CF '12:** Finishing  
**Paula Garbarino CA '80, CF '88:** Marquetry  
**Kolin Schmidt CF '21:** Computer Aided Design  
**John McCormack CF '88:** Sawhorses
- LK **M.A.S. Associates LLC:** ILCO Automotive & Cabinet Locks  
**H To O Supply LLC:** PACLOCK Product Overview  
**Allegion:** Safety & Code  
**Brock Leindecker PC '16:** Chisel Sharpening and Techniques  
**Kelleher Associates:** Assa Abloy Overview  
**Assa Abloy Academy:** Basic and Advanced Electric  
**Dabbs Lock, Inc:** Running a Lock Business
- JM **Ilah Cibis JM '05:** Computer Aided Design  
**Alan Leavitt:** Mold Cutting and Casting  
**Lindsay Minihan:** New Tools Showcase
- PT/PA **Dan Levitan PT '75:** Pitch Corrections, Business Policies, Tuning Stability, Tuning Theory;  
**Gregory Cheng:** Repairing Finishes, Modern Player Pianos;  
**Sally Phillips PT '76:** Tuning  
**Steinway:** Spirio Player Mechanism  
**Jason Cassel:** Voicing  
**Brooks Limited:** Taxes for the Self-Employed
- PC **Rich Friberg PC '04:** Lathe Turning, Sash Making  
**Janet Kane:** Structural Engineering  
**Omri Nassau PC '17:** Masonry  
**Jane Griswold:** Geometry in Construction  
**Sara & Lee Noel Chase PC '94:** Historic Paint & Finishes  
**Fabio Bardini:** Restoration Masonry  
**Penn Austin:** Flat & Ornamental Plastering  
**Daniel Miles:** Dendrochronology
- VM **Nicholas Makris, MIT:** Acoustics  
**Christopher Reuning, Reuning & Son Violins:** Lecture  
**Harrelson Stanley:** Sharpening Stones  
**Benjamin Ruth:** Varnishing  
**Kevin Kelly VM '92:** Drafting the Scroll  
**Christian Shaboon, Reuning & Son Violins:** Restoration  
**Inkyu Hwan, Carriage House:** Restoration  
**Andrew Ryan:** Tone Wood Selection

## CLIENT WORK & SPECIAL PROJECTS

- CA Private Residence, Hanover, MA
- JM Select Items from Jewelry Collection at the Museum of Fine Arts, Boston, MA
- PC Memorial Hall, Charlestown, MA;  
1795 Cape-style Private Residence, Duxbury, MA;  
1740s Private Residence, Sandwich, MA

## CONFERENCES AND COMPETITIONS

- BB Guild of Bookworkers Conference
- CA Prism Awards Gala; JLC Live; MassDEP; Deconstruction Work Group Seminar
- CF Providence Fine Furnishings
- LK Yankee Security Convention;  
NBSS LK Panel Discussion
- PC NH Preservation Alliance Old House and Barn Expo
- PT/PA Virtual Conference

# Community Education

## CLASSES & PROGRAMS

19<sup>th</sup> Century Field Book  
 3-Slat Ladderback Chairmaking  
 A Taste of Spindle Turning  
 Advanced Bowl Turning  
 Advanced Paper Marbling  
 Beginner Marbling with Acrylics  
 Bent Band Oval Boxes  
 Bezel Ring Fabrication  
 Book Structures for Prints  
 and Photographs  
 Bookbinding 101  
 Build a Mountain Banjo  
 Chairmaking: Modern Woven Chair  
 Cherry Wall Cupboard  
 Chip Carving  
 Construction Scheduling  
 Creating Architectural Staircases  
 Danish Cord Footstool  
 Danish Modern Plant Stand  
 Decorative Inlay & Marquetry  
 Decorative Paste Paper  
 Enclosures for Preservation  
 and Beyond II  
 Endbands: Stuck On and Sewn  
 Exploration of Earrings  
 Finishing 101  
 Flat Edge Tool Sharpening  
 Flush Setting  
 Folded Books  
 Fortepiano Maintenance,  
 Regulation, & Repair  
 Fundamental Techniques  
 in Bowl Turning  
 Fundamental Techniques  
 in Spindle Turning  
 Fundamentals of Bookbinding I  
 Fundamentals of Bookbinding II  
 Fundamentals of Fine Woodworking  
 Fundamentals of Finishing:  
 Blind & Gold Tooling on Leather

Fundamentals of Jewelry Making I:  
 Essential Skills  
 Fundamentals of Jewelry Making II:  
 Soldering Intensive  
 Fundamentals of Jewelry Making III:  
 Stone Setting Exploration  
 Fundamentals of Machine  
 Woodworking  
 Gold Tooling with Egg Glaire  
 Harpsichord Voicing & Regulation  
 Historic Sewing Structures  
 Historic Timber Framing  
 Introduction to Book Conservation  
 Introduction to Cabinets  
 Introduction to Chairmaking:  
 Making a Milking Stool  
 Introduction to Copper Enameling  
 Introduction to Decks & Stairs  
 Introduction to Dovetails  
 Introduction to Drywall  
 Introduction to Exterior Trim  
 Introduction to Forging  
 Introduction to Interior Trim  
 Introduction to Leather Bookbinding  
 Introduction to Paper Conservation  
 Introduction to Piano Technology  
 Introduction to Platform Framing  
 Introduction to Roof Framing  
 Introduction to SketchUp  
 Introduction to the Router  
 Introduction to Veneer  
 Introduction to Windows & Doors  
 Italian Paper Bindings  
 Jewelry Making 101  
 Knitted Boards Binding  
 Layout for SketchUp  
 Making Space: Introduction to  
 Woodworking for Conservators  
 Medieval Long & Link Stitched  
 Bindings

Metal Clasps for Books  
 Miniature Marbling  
 Picture Frames  
 Relief Printmaking for  
 Patterned Bookcloth  
 Shaker Oval Boxes  
 Shaker Tape Weaving  
 Simple Japanese &  
 Chinese Bookbindings  
 Soldering Basics  
 Spoon Carving: Dry Wood  
 Spoon Carving: Green Wood  
 Stereotomy: Building the  
 “Moore” End Table  
 Stringing & Banding  
 Three-Month Furniture  
 Making Intensive  
 Traditional Ethiopian Bookbinding  
 Turn a Bark Rim Bowl Made with  
 Wet Wood  
 Turn a Bud Vase with a Glass Sleeve  
 Turning Basics: Rolling Pin  
 Twice-Turned Bowl Made from  
 Wet Wood  
 Veteran & Family Woodworking:  
 Build a Birdhouse  
 Veteran Woodworking:  
 Spoon Carving  
 Veteran Woodworking:  
 Woodworking 101  
 Wax Carving & Casting Clean Up  
 Window Sash Restoration  
 Windsor Side Chair: Design & Build  
 Woodworking 101  
 Woven Backpacks



## Exhibitions, Events & Public Programs

### PUBLIC PROGRAMS (IN THE MAKING)

**Conversations:**  
 2024 Exhibition  
 Boston’s North End  
 From Student to Instructor  
 Locksmithing & Facilities  
 People’s Inclusive Welding  
 Robotics & Toolmaking  
 Slöyd Experience  
 Stephen Hamilton  
 Thinking with Things

**Lectures:**  
 BA Harrington CF ’93  
 Backwoods Chairmakers  
 by Andy Glenn CF ’08  
 Emmet Van Driesche  
 Notre-Dame Project  
 with Handhouse Studio



### EXHIBITIONS

*In the Making* Exhibition  
 Sep 7 – Dec 12, 2023

2024 Exhibition: *Then & Now*  
 May 3 – Aug 10, 2024

### NBSS COMMUNITY EVENTS

Commencement Ceremony  
 Exhibition Opening Party  
 Community Partners Breakfast  
 Founder’s Day  
 Friends and Family Meet & Greet  
 Locksmithing Panel & Tour  
 North End Neighborhood Breakfast  
 Open House & Winter Market  
 Piano Technology Virtual Conference  
 Student & Alumni Holiday Party

# Financial Overview

## Letter from the Treasurer

OVER THE LAST FISCAL YEAR, we have achieved significant milestones for the School, and I am pleased to share the financial overview of our institution.

The School's strong financial foundation allowed Fiscal Year 2024 to focus on two key priorities of its strategic plan: deepening support for faculty and students, and strengthening the School's resources and operational capacity.

In support of faculty and students, NBSS leadership invested in its employees through a compensation review to ensure market competitiveness, and promoted greater equity and transparency. The expansion of the Teaching Assistant program, with at least one TA per course, further enhanced faculty resources and supported student learning. Additionally, we expanded educational technology, improving accessibility for both students and faculty.

Regarding resources and operational strength, our Community Education (CE) program saw notable success, with significant increases in student registrations, classes offered, and overall revenue. This marks the third consecutive year of financial growth for CE and underscores its role in raising the School's profile as a leader in craft and trade education. Projections for enrollment in CE courses and Career Training Programs (CTP) suggest these trends will continue.

In the following pages, we provide detailed insights into the financial performance of the last fiscal year, including the strong CE revenue and an increase in CTP tuition revenue.

Although contributions, gifts, and grants were lower than anticipated, this was offset by a remarkable increase in capital gifts, inclusive of an Endowment Challenge that will be reflected in future reports. Notably, we received the single largest gift in the School's history—\$2.5 million from an anonymous foundation. This transformative support will have a lasting impact on NBSS for many years to come.

On behalf of the Board, we are immensely grateful for your continued support and dedication to NBSS. Together, we will keep changing lives through this unique and impactful institution.

As I complete my term on the Board at the end of 2024, I want to share a personal note of gratitude. I am proud to have served as a Board member and Treasurer of this remarkable institution for the last six years. The faculty, students, and staff seize each day as an opportunity for meaningful work, and the impact of their efforts is far-reaching. What wasn't entirely clear to me until I became Treasurer was the critical role the broader School community plays. Your generosity of time and resources allows the School to thrive, evolve, and achieve its mission in ways that truly make a difference.

I look forward to seeing how NBSS continues to grow and flourish, knowing that it will be in capable hands with your ongoing support.



**Matthew P. Day**  
Treasurer



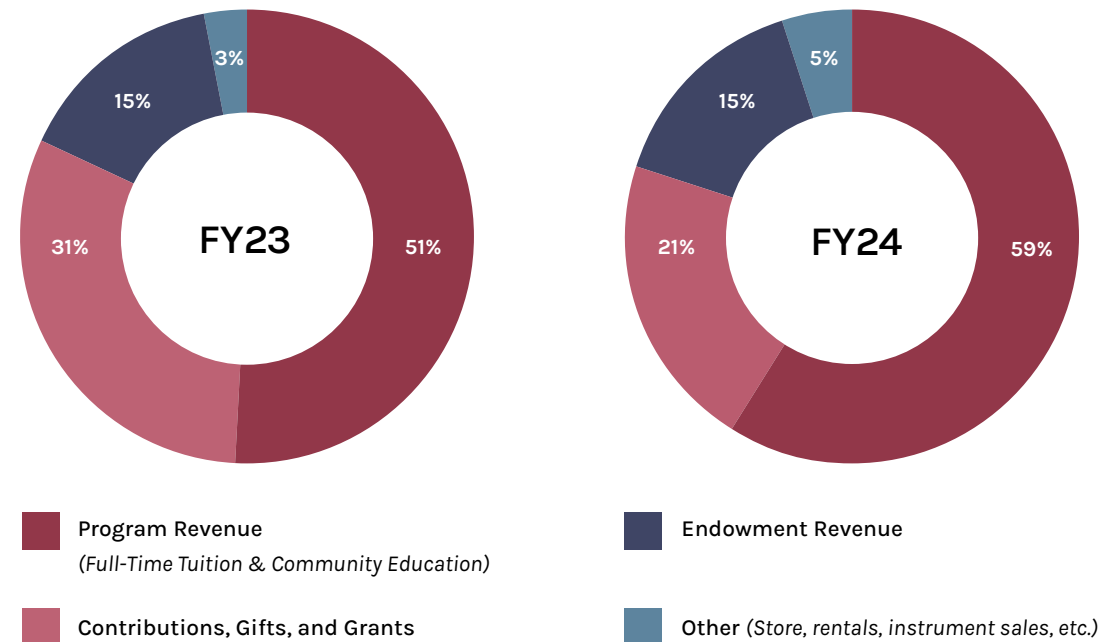
# Financials

## STATEMENT OF ACTIVITIES

### Revenues

	7/31/2023	7/31/2024*	% CHANGE	% OF OPERATING REVENUE
Tuition and fees, net	2,562,751	3,050,981	19.1%	47%
Contributions, gifts, and grants	1,924,154	1,364,399	-29.1%	21%
Community education	547,705	747,463	36.5%	12%
Project and instrument revenue	113,122	129,464	14.4%	2%
Investment income used in operations	894,000	955,000	6.8%	15%
Other revenue	19,531	80,733	313.4%	<1%
Rental revenue	6,000	11,750	95.8%	<1%
Store sales, net of cost of sales	61,556	110,599	79.7%	2%
<b>Total Operating Revenues</b>	<b>6,128,820</b>	<b>6,450,389</b>	<b>5.2%</b>	<b>100%</b>
Non-operating gifts	609,000	2,555,072	319.6%	
<b>Total Revenues</b>	<b>6,737,820</b>	<b>9,005,461</b>	<b>33.7%</b>	

### Operating Revenue by Source



### Expenses

	7/31/2023	7/31/2024*	% CHANGE	% OF EXPENSES
Program	3,012,934	3,426,152	14%	41%
General and administrative	4,095,615	4,567,246	12%	54%
Fundraising and development	394,515	427,931	8%	5%
<b>Total Expenses</b>	<b>7,503,064</b>	<b>8,421,328</b>	<b>12%</b>	<b>100%</b>
<b>Change in Net Assets from Operations</b>	<b>-765,245</b>	<b>584,133</b>		

### Non-Operating Activity


	7/31/2023	7/31/2024*	% CHANGE
Investment income used in operations	-894,000	-955,000	6.8%
Interest and dividend income	746,196	763,413	2.3%
Endowment gifts	21,350	80,328	276.2%
Gain (loss) on investments, net fees	998,126	2,778,934	178.4%
<b>Total Non-Operating</b>	<b>871,672</b>	<b>2,667,674</b>	<b>206.0%</b>

### Net Assets

	7/31/2023	7/31/2024*
Change in net assets	106,427	3,251,807
Net assets at beginning of fiscal year	54,100,523	54,206,952
<b>Net assets at end of year</b>	<b>54,206,952</b>	<b>57,458,759</b>

\* Results are unaudited as of the publish date of this report.





North Bennet Street School extends our deep gratitude to all community members who generously supported the School during our 2024 fiscal year.

The following donors are recognized for gifts and pledges made to NBSS between August 1, 2023 and July 31, 2024.



# Our Donors



# The Shaw Society

Named after North Bennet Street School's founder, Pauline Agassiz Shaw, the Society recognizes leadership donors who ensure the School's ongoing excellence with NBSS Fund contributions of \$1,000 or more.

## Visionary

\$100,000+

Bruce & Lynn Dayton  
Judy BB '97 & Carl Ferenbach

## Mentor

\$50,000-\$99,999

Charina Endowment Fund  
William CF '07 & Corinna Hettinger

## Expert

\$25,000-\$49,999

Barbara & Amos Hostetter  
Laurence C. Lombard  
Deborah & Mark Pasculano  
Genie CF '16 & Will Thorndike  
Michael and Louisa von Clemm Foundation, Inc.

## Artisan

\$10,000-\$24,999

Peter S. CA '83 & Kathy Feinmann  
Rebekah Lord Gardiner BB '93 & J. Matthew Gardiner  
Eric Hilfers  
Edward C. Johnson, IV  
Lynch & Lynch, Attorneys  
The Morgan Palmer Foundation  
Caroline Mortimer  
Neil & Anna Rasmussen  
Seth Sprague Educational and Charitable Foundation  
Anonymous (2)

## Craftsperson

\$5,000-\$9,999

David CF '11 & Holly Ambler  
McKey BB '11 & James Berkman  
Nancy Dempze & Dan Bailey  
John M. Driggers CF '87  
E & L Campbell Family Foundation  
Eastman Charitable Foundation  
Simon Eccles & Carolyn Hitt  
Janet & Chris English  
Jock Gifford JM '97, CF '01 & Brigid Sullivan  
Howard Gorin  
Bayard Henry  
Charles CF '05 & Charlotte Kline  
Elizabeth & Philip Loughlin, in honor of Deb Pasculano  
Marc & Anne Margulies  
Robert & Joan Murray, in honor of Thomas and Catherine Piemonte  
Nick Offerman  
Thomas & Catherine Piemonte  
Anonymous (3)

## Apprentice

\$2,500-\$4,999

Paula J. Garbarino CA '80 CF '88  
James Stewart Greto  
Vin CF '13 & Becky Kennedy  
Geraldine Kerrigan  
Tish & Steve Mead  
Starr Moore  
Richard Greener & Carrie Pascoe, in memory of George C. Greener  
Lia G. & William J. Poorvu  
Paul Reidt & Kim Manasevit  
Philip C. & Anne Stevens  
Harriet S. Turner  
Robert Cushman Woods Van Nostrand Memorial Fund  
Suzanne Walsh  
Anonymous (2)

## Advocate

\$1,000-\$2,499

Norm Abram & Elise Hauenstein  
Dorothy C. Africa BB '93  
Applied Materials Foundation  
Jacob D. Albert  
Amelia Sillman Rockwell & Carlos Perry Rockwell Charities Fund, Bank of America, N.A., Trustee  
The Blackbaud Giving Fund  
Mary Patrick Bogan  
Brian C. Broderick  
Fenton J. Burke CF '95  
J. Otis Carroll, Jr. PC '97  
Carol & Bruce Caswell, in honor of Bexx Caswell BB '09  
Richard & Dan Cheek CF '10, in memory of Betsy Cheek  
William G. Creelman  
Bill Davison & Carol Rissman  
Matthew Day & Catherine Stabile  
Nicholas & Elizabeth Deane  
Tia Dennis CF '03 & Charles Morris  
Jim & Ellen Dunn  
Edmund and Betsy Cabot Charitable Foundation  
Michele Elliott, in honor of Colleen Walsh Powell  
Lawrence Fine PT '76  
David & Karen Firestone  
Claire Fruitman CF '96, Brian, & Griffin Bram  
Donald & Kaia Fye  
Anne Garee  
Connie & Fred Glore  
Susan Cable & Benjamin Gomez  
Miguel Gómez-Ibáñez CF '99, President Emeritus  
Jason Gregoricus & Seton Lindsay  
Deborah Hall  
Donald E. & Ann F. Hare  
Burton CF '97 & Shirley Harris  
Andrea & Mark J. Hauser  
John Heveran CF '25  
Gaye Hill & Jeffrey Urbina

Lyle Hiorns, PA '01  
Rex & Gay Holsapple  
Edward & Marianna Howland  
Kathleen Hull  
Brent Hull PC '93  
Charlotte von Clemm Iselin & William Iselin  
Chip & Gay Jarvis  
Alison & Peder Johnson  
Steven Kirincich & Susan Mahan  
Knapp Family Foundation  
Rob Leahy  
Marvin Lummis PC '00  
Michael & Cynthia Malm  
James Mason  
Walter McDonald, Associate Director Emeritus  
Nicolas Minutillo  
Jane & Robert Morse  
Patrick CF '97 & Danielle Muecke  
Betty Munson  
Jean Ann & Alan Nierenberg  
Timothy CA '23 & Tess O'Brien

William CF '23 & Joy O'Connor  
Selma Ordewer  
Justin Pasculano CA '17  
Jennifer Pellecchia BB '19  
Colleen Walsh Powell, in honor of Nicki Downer  
Cornelia C. Roberts  
John Robinson, in memory of June N. Robinson  
Rosse Family Charitable Foundation  
Evan Schumer CF '24  
Laura & William Shucart  
Andy Silverman CF '14 & Molly Paul  
Carl Spector & Marilu Swett  
Peter H. Talbot  
Joan Thorndike  
Sarah Turner & Suzanne Pugh  
Vaughn Waters  
Mary & Tim Williams, Executive Director Emeritus  
Valeria Dean Wolff  
Juliana Wong & Peter Kurunczi  
Anonymous (4)



The NBSS Fund provides unrestricted support for the School's annual operating needs. These funds ensure the financial strength and flexibility for NBSS to fulfill its mission day in and day out, supporting everything from financial aid to tools and field work for students and faculty.

**\$500-\$999**

- Kate CF '00 & Diane Benison
- Jackie Blombach PC '02 & Michael Duca
- Phyllis Bloom, in memory of Dr. David Bloom
- The Hon. Levin H. Campbell
- Martha B. Childs
- Clemency Coggins
- Robert Field & Susan Geller
- Gary W. Green CF '97
- James M. Hamlen
- Karen S. Hohler
- James & Susan Hunnewell
- Bill & Lauren Huyett
- Kevin Kelly VM '92 & Patricia Belden Kennedy & Violich Architecture
- Ernest & Robin Krieger
- Timothy & Susan Larkin
- Harold & Beth Lewis
- The Lindsay Foundation
- James M. Marsh
- Kevin McCaskill
- Peter McGhee CF '04
- Christopher McLain
- Pamela & Don Michaelis
- David Michaelson
- Jane Callahan Moore CA '88
- Lynn Petrasch
- Chris Rifkin
- Charles Sawyer
- Thomas C. Schwartzburg
- David & Marie Louise Scudder
- Lisbeth L. Tarlow & Stephen B. Kay
- Colin Urbina BB '11
- Tom & Alice Walsh
- Rick Weisse
- David H. Wellington CF '99
- Anonymous



**\$250-\$499**

- |   |   |
|---|---|
| Joseph & Paula Axelrod                                  | Gregg Kulichik  |
| Katherine Boden, in memory of Nicholas Rege-Colt CF '93 | Daniel Levitan PT '75   |
| Levin H. Campbell, Jr.                                  | Dave B. Manley  |
| Ira Carp  | Loy Martin  |
| Gregory Cheng   | Consuela G. Metzger BB '93  |
| Margaret Cole, in memory of Wilfred J. Taylor           | Susan J. Montgomery   |
| Anne Marie Conway & Art LaMan CF '21                    | Jim & Dorothy Rogers  |
| Jerry CF '84 & Amy de Rham                              | Catherine & Phil Saines   |
| Thomas PC '88 & Rhoda Decatur                           | Nancy & Richard Schrock   |
| J. T. Delaney Construction LLC                          | Will Sullivan   |
| Eric Donnelly PT '08, PA '11                            | J. Arthur CF '00 & Jeannette Taylor                               |
| John Ellenberger & Patti Thompson                       | Tatiana Wilcke CF '89 & Gregory Porfido CF '89                    |
| David Franz CF '99                                      | Jane & James Wilson   |
| Elissa Freud and Steve Willis                           | Stephanie Wolff & Steven Mann                                     |
| Richard D. Huhn CF '13                                  | Valerie A. Wyckoff BB '89, in memory of Marilyn L. Heskett BB '88 |
| Paul Klitzke PT '85, PA '86                             | Anonymous (4)   |
| Barbara Krakow  |   |

# The NBSS Fund

**\$100-\$249**

Raquel Alonso-Perez  
 Daniel C. Bacon  
 Susi Barbarossa BB '96  
 Andrew Barlow  
 Lisa Unger Baskin  
 Lisa Bielefeld  
 Francis Blake  
 Bonfire Funds, Inc  
 Jay Borden  
 Anthony Bravo, Jr.  
 Robert & Juliana Brazile  
 Sue Brown PT '96, PA '97  
 Richard & Marietta Burns  
 Sara B. Chase  
 H. Nichols B. Clark  
 Jay Cogswell  
 Lauren Cook  
 Edward S. Cooke, Jr. & Carol Warner  
 Sarah M. Corvene PC '99  
 Anne M. Donaghy  
 Valerie Fendt BB '10 & Alexa Bradley  
 Erin Fletcher BB '12  
 Leslie T. Gibbons  
 Gary Gill-Austen  
 David R. Godine  
 Robert Goodman  
 Nathanael B. Greene, Jr.  
 Payson L. Greene  
 Holly Grodsky PT '19, PA '20  
 Brian Hall Guck  
 Donald Halsted  
 Jeri Hamlen & Joe Hammer  
 Paul Hardy CF '78, in memory of  
 Paul McDermott CF '83  
 Marsha S. Hassett VM '98  
 Jessica Henze BB '06  
 Arlene Holtzman  
 Walter & Lila Hunnewell  
 Ken & Robin Isaacs  
 Peter Jeffries  
 Thomas & Doreen Johnson  
 Jennie M. Kee, in memory of  
 John J. Mohr



Lee Klein PA '96  
 Sarah Kuhn  
 Lawrence & Marcia Lapson  
 Brock Leiendecker PC '16  
 Kate Levy BB '18  
 Stephen Logowitz  
 Thomas S. McAndrews CF '03  
 William McGuffin, PT '79  
 Ray Negron  
 John Nove BB '07  
 Dale Olson & Alice McGuiggan,  
 in honor of Bexx Caswell BB '09  
 Shannon Ouellette  
 Our Change Foundation  
 Todd & Sharon Pattison  
 John W. Pratt  
 Clifford Reid  
 Neil Rossman  
 Ed Russell  
 Michael Serotta  
 Jo Ann Share PT '04, PA '05, in memory  
 of David C. Betts PT '72, PA '20  
 Ross & Kathleen Sherbrooke  
 Zoe A. Sherman PT '00 &  
 Christopher Kendig PA '00  
 Cy Shuster PT '06

Nancy Skinner  
 Stephen Snyder PT '77, in memory of  
 David C. Betts PT '72, PA '20  
 Bob Solorio  
 Michelle Stranges PT '93, PA '94,  
 in memory of David C. Betts  
 PT '72, PA '20  
 Toni Strassler  
 Molly Sturges PA '00  
 Joseph S. Tanen VM '87 &  
 Nancy Phillips  
 Abraham and Carmen Tesser  
 Derek Trelstad PC '88  
 Kenneth P. Tucker PA '82  
 Susan H. Wasserman  
 William D. Webster  
 John W. Weeks, Jr.  
 Brian L. Weldy CF '01  
 Jerry Wheelock  
 Gabrielle R. Wolohojian  
 Hilary & Eric Woodward  
 Nina Zannieri  
 Anonymous (9)  
 Anonymous, in memory of  
 Joyce Hanna CF '96

**\$1-\$99**

Levi Barrett  
 Barbara Bennett  
 Hal Bloom  
 Jim Briggs  
 Cate Carulli PT '87, in memory of  
 David C. Betts PT '72, PA '20  
 Judith A. Cohen BB '98  
 Charles Dietrick  
 Lillian DiGiorgio  
 Mario DiLeo  
 Daniel Dover PA '90  
 Mark Elenko  
 William Etter  
 Lori Foley BB '95  
 Kathleen & John K. George, Jr.

Anne Andrus Grady  
 Russell T. Greve  
 Erin Hanley CF '07  
 Kamala Harrington CF '15  
 Barbara Adams Hebard BB '90 &  
 Christopher Hebard  
 David & Ann Ingram  
 Robert A. Korbonits CF '79  
 Christopher Larkin PC '04  
 Joan Lawrie PT '06, PA '07  
 Dennis W. CF '99 & Paula Lawton  
 Linda & Steven Lembke  
 Carl Lieberman, in memory of  
 Isaac Sadigursky  
 Dr. Michael J. Lyon

Judith B. McDonough  
 Dorothy McMahon  
 Robert V. Mullen  
 John F. O'Regan BB '97  
 Cynthia E. Rallis  
 Sonja Piilgaard Reid BB '98  
 Norma Rey-Alicea  
 Elizabeth Rochow PT '19, PA '20  
 Marion D. Wasserman  
 Anonymous (3)



# Grants

NBSS is grateful to benefit from generous institutional support—grants which contribute substantially to financial aid, facilities and equipment, endowed funds, general operating needs of the School, and more.

## Restricted

- Adelard A. & Valeda Lea Roy Foundation
- CHT Foundation
- City of Boston Office of Veteran Services
- Copeland Family Foundation, Inc.
- Ddora Foundation
- Elisha-Bolton Foundation
- Frank M. Barnard Foundation, Inc.
- Hettinger Foundation
- Liberty Mutual Foundation
- Massachusetts Charitable Mechanic Association
- Yankee Security Convention, Inc.
- Anonymous (3)

## Unrestricted

- Clinton H. and Wilma T. Shattuck Charitable Trust
- E & L Campbell Family Foundation
- Elizabeth Taylor Fessenden Foundation
- Ellen Abbott Gilman Trust
- Mary and Kathleen Harriman Foundation
- Massachusetts Cultural Council
- Seth Sprague Educational and Charitable Foundation
- Anonymous



# Partners in Craft

Partners in Craft recognizes businesses and corporations that support the School with unrestricted contributions. NBSS extends our gratitude to these supporters across industries.

“When we look for workers, we look for people who really care about what they’re building and what they’ll leave behind. North Bennet attracts those kinds of people.”

— NICK BEASLEY PC '03, ADAMS + BEASLEY ASSOCIATES

**Partner**     **\$10,000+**  
Holt and Bugbee Foundation, Inc.

**Builder**     **\$5,000**  
Adams + Beasley Associates  
Feinmann, Inc.

**Associate**     **\$2,500**  
BOND Brothers, Inc.  
Columbia Contracting Corp.  
F.H. Perry Builder

**Supporter**     **\$1,000**  
Firestone and Parson, Inc.  
Inland Underwriters Insurance Agency  
New England Design & Construction





Restricted gifts include those designated to specific NBSS departments, current-use scholarship funds, endowed funds, or other special projects and initiatives.

“My relationship with NBSS has many facets: alumnus, instructor, and equally important, as a donor. This incredible community requires more than our time, it requires our support, to ensure that faculty and students have all the resources they need to guarantee we remain a premier vocational institution.”

— BROCK LEIENDECKER PC '16, CA INSTRUCTOR

## Restricted Gifts

### Bookbinding

Todd & Sharon Pattison  
W. Hansford Watford  
Anonymous, in memory of Doris C. Freitag

### Cabinet & Furniture Making Scholarship

Oneida Air Systems Inc.

### Continuing Education

Betty Munson  
Matthew & Laurie Nee

### Jewelry Making & Repair

Raquel Alonso-Perez  
Nina Zannieri

### Locksmithing & Security Technology

Allegion  
Arrow/Assa Abloy  
Corbin Russwin/Assa Abloy  
Don-Jo MFG., Inc.  
H to O Supply, LLC  
Ilco, Corp.  
Pasek Security  
Sargent/Assa Abloy  
Anonymous

### Piano Technology

Gregory Cheng  
Lyle Hiorns PA '01, in support of the  
Piano Technology Department Scholarship  
Paul Klitzke PT '85, PA '86  
William McGuffin, PT '79  
Lewis PT '79, PA '80 & Toni Surdam  
Anonymous

### Preservation Carpentry

Thomas PC '88 & Rhoda Decatur

### Violin Making & Repair

Richard Greener & Carrie Pascoe,  
in memory of George C. Greener  
Anonymous

## NBSS General Scholarship Fund

Nelly Balloffet,  
in memory of Doris C. Freitag  
Lisa Unger Baskin  
Barbara Bennett  
McKey BB '11 & James Berkman,  
in memory of Doris C. Freitag  
The Crawford-Fang Fund of Fidelity Charitable,  
in memory of Doris C. Freitag  
Samuel & Avril Ellenport,  
in memory of Doris C. Freitag  
Valerie Fendt BB '10 & Alexa Bradley  
Amanda Hegarty BB '91 & Mark Esser,  
in memory of Doris C. Freitag  
Dr. Michael J. Lyon  
Consuela G. Metzger BB '93,  
in memory of Doris C. Freitag  
Nicolas Minutillo  
John F. O'Regan BB '97,  
in memory of Doris C. Freitag  
James Reid-Cunningham, BB '90,  
in memory of Doris C. Freitag  
Catherine & Phil Saines  
Deborah Wender,  
in memory of Doris C. Freitag  
Anonymous



## The 1881 Society

Named for the year of our founding, the 1881 Society recognizes members of our community who have included NBSS in their estate plans. By supporting the School through planned giving, the 1881 Society ensures a future for craft and trade education.

Natalie Q. Albers  
Dorothy Bell PT '99  
Barbara M. Brenzel  
Donna Byrd PT '81  
Richard & Betsy Cheek  
Dr. Thomas Divilio  
John M. Driggers CF '87  
Irving CF '86 & Shirley Gerber  
Louis Giovanella  
Miriam Graham PT '75  
James Stewart Greto  
Deborah M. Hauser  
John Herbert CF '06  
Marilyn L. BB '88 & James L. Heskett  
Elizabeth Ann Hutchins  
Kristen N. Johnson  
The Edith M. Kemp Revocable Trust of 2003  
Vin CF '13 & Becky Kennedy  
John McAlister  
Walter McDonald, Associate Director  
Emeritus  
Paul & Carla McDonough  
John J. Mohr  
Jane Callahan Moore CA '88  
David Nadworny PT '72  
John Nove BB '07  
Selma Ordewer  
The Morgan Palmer Foundation  
David Popwell  
Donna Soodalter-Toman  
Steven B. Soppe  
Keith Ward PT '12, PA '13  
Robert Weir & Deborah Krupenia  
Deborah Wender  
Valerie A. Wyckoff BB '89  
Anonymous

If you have included NBSS in your estate plans and are not listed here, please contact Nicki Downer at [ndowner@nbss.edu](mailto:ndowner@nbss.edu).



## Gifts to Named Funds

### Alex Krutsky Memorial Fund

Gary Koepfel & Anastasia Vassos  
Maria Lindgren  
Dennis McNally

### David Betts Scholarship for Basic Piano Technology

Patrick Branstetter PT '10, PA '11  
Sue Brown PT '96, PA '97  
Benjamin Cross PT '17, PA '18  
Robert Gallagher PA '00  
Marie Jo PT '23  
Michael Jurewicz  
Mark Mikkelsen PT '94, PA '95  
Brooks LTD Piano Products LLC  
Piano Technicians Guild  
Barbara Pease Renner PT '78,  
in memory of David C. Betts  
PT '72, PA '20  
Keith Ward PT '12, PA '13

### NBSS Scholarship Endowment

John J Mohr 2006 Revocable Trust

### Greg Comly Scholarship Fund

Michael & Leslie Comly

### Hauser Family Fund

Deborah M. Hauser

### Impact Scholarship

Heather Tauck PC '15

### Joseph Newman

#### Bookbinding Scholarship

Sherelyn Ogden  
Anonymous

### Kennedy Family Fund for Veterans and Immigrants

Jonathon Clark CF '25

### Lisa von Clemm

#### Bookbinding Scholarship

Walter & Lila Hunnewell

### Marilyn L. Heskett Scholarship

James L. Heskett, in memory of  
Marilyn L. Heskett BB '88  
Robert E. Kavey, in memory of  
Marilyn L. Heskett BB '88  
Toby M. Sloane, in memory of  
Marilyn L. Heskett BB '88  
Allen L. Snyder, in memory of  
Marilyn L. Heskett BB '88  
WCM Investment Management,  
in memory of Marilyn L. Heskett  
BB '88  
Mark & Patricia Willemssen,  
in memory of Marilyn L. Heskett  
BB '88

### Cabinet & Furniture Department Northfield Equipment Project

Bob & Bobo Devens  
Morgan Fog CF '24  
Kirk S. Hachigian  
Robert Perry Harris CF '24  
John Heveran CF '25  
Mark Richey Woodworking  
Douglas Nelson CF '23  
Lance Patterson CF '79  
Sarah Turner & Suzanne Pugh  
Jonathan Wachs CF '15

### Sanborn Mills Scholarship Fund

F. Colin Cabot

### Stanley M. Sherman Memorial Fund

Daniel J. Sherman, in memory of  
Stanley M. Sherman

### Walter McDonald Scholarship Fund

Walter McDonald,  
Associate Director Emeritus

### Western Ohio Woodworkers Endowment

Harris Bartine  
Scott D. Phillips  
Western Ohio Woodworkers  
Organization

## Gifts In-Kind

Allegion

Arrow/Assa Abloy

Jeffrey Altepeter BB '99

Big Night Live

Brooks Limited

Michael Burrey

CB Fisk Inc.

Charles Faulk Tools

Corbin Russwin/Assa Abloy

Darlow Christ Architects

Don-Jo MFG., Inc.

Alexandra Dupuy & Richard Meyer

Erwin's Piano Forte Supply

H to O Supply, LLC

John Heveran CF '25

Ilco, Corp.

Cyndy Kashnor

Ellen Kaspern CF '03

Charles L. Kline CF '05

Nat Kuhn

Ted Leigh

Nick Maraldo CF '07

Walter McDonald,

Associate Director Emeritus

Bob Miller CF '11

Robert D. Mussey

Steven O'Shaughnessy PC '99

Lily Owyang

Pasek Security

Lance Patterson

Todd Pattison

Elizabeth P. Powell

Reader's Hardwood

Reyburn Piano Works

Reyburn Tools

Ronson Piano Hammer Co.

Sargent/Assa Abloy

Schaff Piano

Shattuck's Ace Hardware

Sharon Stetson

Urban Adventours

Anonymous

## NBSS Named or Endowed Funds

The following funds and scholarships, established over time and sustained by generations of North Bennet Street School alumni and friends, remind us of the legacy and impact of philanthropy across our School community. Some funds provide unrestricted support, some have special designations, and all demonstrate a meaningful investment in our core mission and values.

Alex Krutsky Memorial Fund  
Amelia Peabody Facilities Endowment  
Board of Advisors Scholarship  
Colonel Ruby W. Linn Veterans Program Endowment  
David Betts Scholarship for Basic Piano Technology  
Gladys Brooks Foundation Scholarship  
Harold Whitworth Pierce Scholarship  
Hauser Family Fund  
Hettinger Fund for Strategic Online Project\*  
Julia Camilla Larocque Memorial Scholarship  
Lisa von Clemm Bookbinding Scholarship  
Manton Scholarship Endowment  
Marilyn L. Heskett Scholarship  
Miguel Gómez-Ibáñez Fund for Facilities  
Kennedy Family Fund  
Shawmut Street Scholarship\*  
Stanley M. Sherman Memorial Fund\*  
Surdam-Murphy Scholarship  
Violin Making Award for Excellence in Craftsmanship  
Walter McDonald Scholarship  
Western Ohio Woodworkers Scholarship  
Windgate Foundation General Endowment

\* Temporarily Restricted Funds





North Bennet Street School's mission is to train students for careers in traditional trades that use hand skills in concert with evolving technology, to preserve and advance craft traditions, and to promote greater appreciation of craftsmanship.

**Credits**

Editorial:	NBSS
Writing:	NBSS, Danna Lorch
Photography:	Josephine Sittenfeld, NBSS
Design:	Studio Rainwater